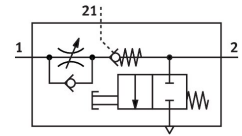


One-way flow control valve VFOF-LE-BAH-G14-Q8

Part number: 1927030

FESTO



[General operating condition](#)

Datasheet product reliability

The information in this "Product reliability data sheet" is based on products being used as intended. This includes complying with all specifications in data sheets, catalogues, user documentation and the general operating conditions. The user alone is responsible for determining whether a product is suitable for a particular application.

Feature	Value
Service-life value B_{10} ¹⁾	23 Mio cycles
Fault exclusion	Spontaneous opening of the manual exhaust function in pressurised and depressurised condition. Spontaneous change in initial switching position (without input signal). For check valves only with applied pressure at port 2.
Well-tried component ²⁾	Yes
Vibration resistance	Transport application test with severity level 2 in accordance with FN942017-4 and EN 60068-2-6
Shock resistance	Shock test with severity level 2 in accordance with FN 942017-5 and EN 60068-2-27

- 1) The ascertainment of characteristic service life values is based on the ISO 19973 "Pneumatic fluid power - Assessment of component reliability by testing".
- 2) The product is a well-tried product for a safety-related application according to ISO 13849-1. The relevant basic and well- tried safety principles according ISO 13849-2 for this product are fulfilled. The suitability of the product for a precise application must be verified by the user.