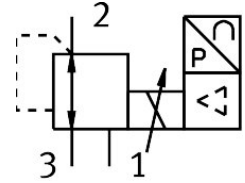



# 比例压力阀

## MPPES-3-1/8-6-010

订货号：187352

FESTO



 General operating condition

### Datasheet product reliability

The information in this "Product reliability data sheet" is based on products being used as intended. This includes complying with all specifications in data sheets, catalogues, user documentation and the general operating conditions. The user alone is responsible for determining whether a product is suitable for a particular application.

特性	值
Service-life value $B_{10}$ <sup>1)</sup>	78 Mio cycles
Safety instructions	Safety position for MPPES: If the power supply cable is interrupted, the outlet pressure drops to 0 bar.
CE mark (see declaration of conformity)	To EU EMC Directive To EU RoHS Directive

- 1) The ascertainment of characteristic service life values is based on the ISO 19973 "Pneumatic fluid power - Assessment of component reliability by testing".