

Ball valve QH-QS, QHS-QS

**FESTO**



Type code

001	Series	
QH	Ball valve	
002	Design type	
	Standard	
S	Short	

003	Pneumatic connection 1	
QS-4	Push-in connector 4 mm	
QS-6	Push-in connector 6 mm	
004	Pneumatic connection 2	
	Same size push-in connector as pneumatic connection 1	
1/8	Male thread R1/8	

# Datasheet

## General technical data



Short type code	QH				QHS
Pneumatic connection, port 1	R1/8		QS-4	QS-6	
Pneumatic connection, port 2	QS-4	QS-6	QS-4	QS-6	
Nominal size	2.5 mm			4 mm	
Design	Ball valve				
Type of mounting	Screw-in		In-line installation		Via lock nut
Valve function	2/2 double solenoid				
Type of actuation	Manual				
Sealing principle	Soft				
Standard nominal flow rate (standardised to DIN 1343)	235 l/min	560 l/min	148 l/min	533 l/min	528 l/min

## Operating and environmental conditions

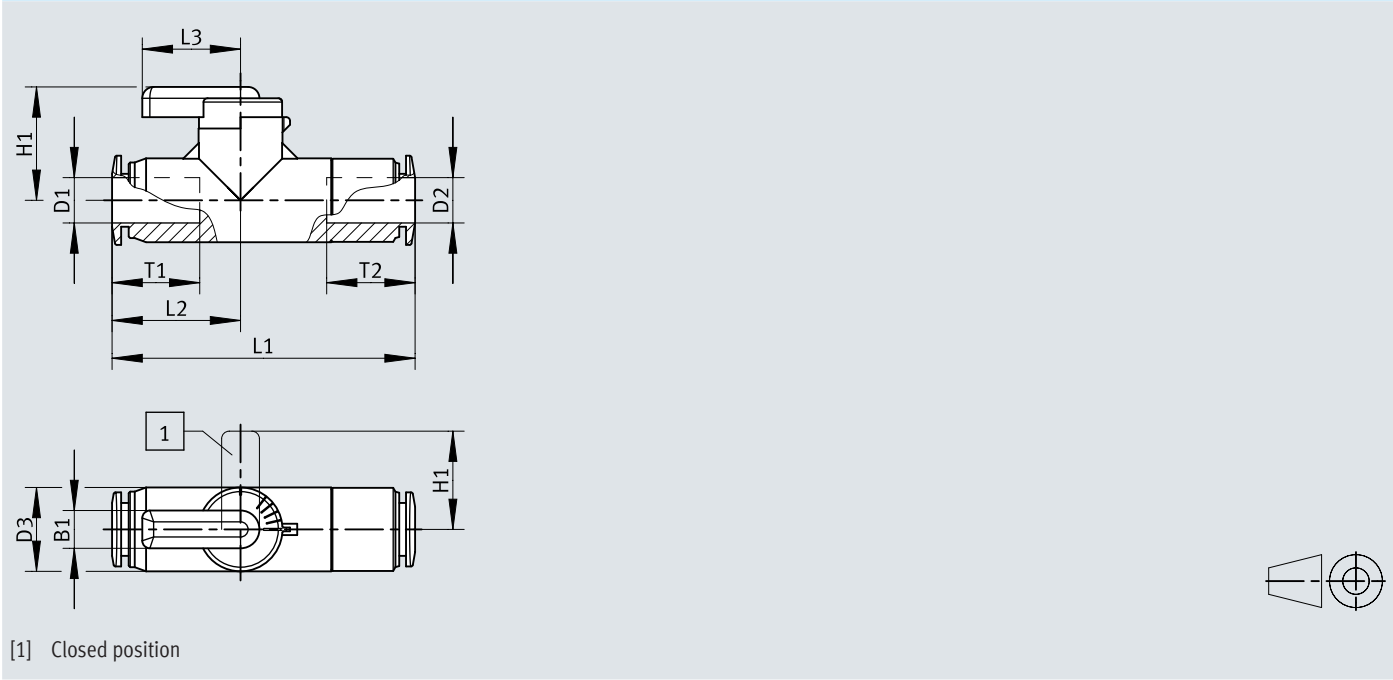
Operating medium	Compressed air to ISO 8573-1:2010 [7:-:-]
Note on operating and pilot medium	Lubricated operation possible (in which case lubricated operation will always be required)
Operating pressure	-0.1 ... 1 MPa
Operating pressure	-1 ... 10 bar
Ambient temperature	0 ... 60°C

## Materials

Material housing	PBTP
Material screwed plug	Nickel-plated brass
Note on materials	RoHS-compliant
LABS (PWIS) conformity	VDMA24364-B1/B2-L

Dimensions

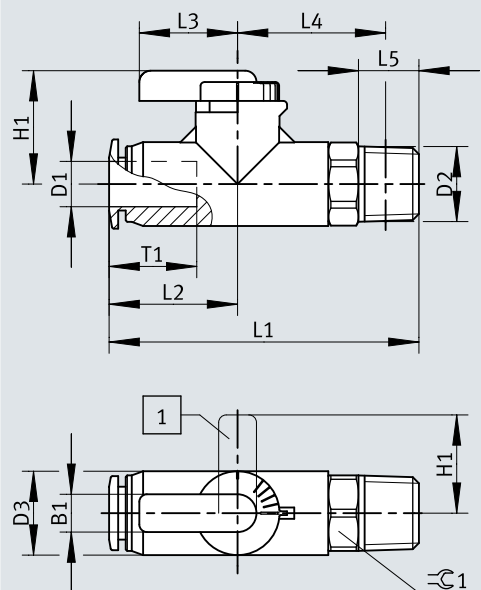
Dimensions – Push-in connector at both ends Download CAD data [www.festo.com](http://www.festo.com)



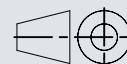
	B1	D1 ø	D2 ø	D2 ø	H1	L1	L2	L3	T1	T2
QH-QS-4	5	4	4	11,1	13	38,1	17,2	13	11,6	11,5
QH-QS-6		6	6			40,7	17,3		11,9	12

## Dimensions

### Dimensions – Male thread/push-in connector

[Download CAD data](#) [www.festo.com](http://www.festo.com)


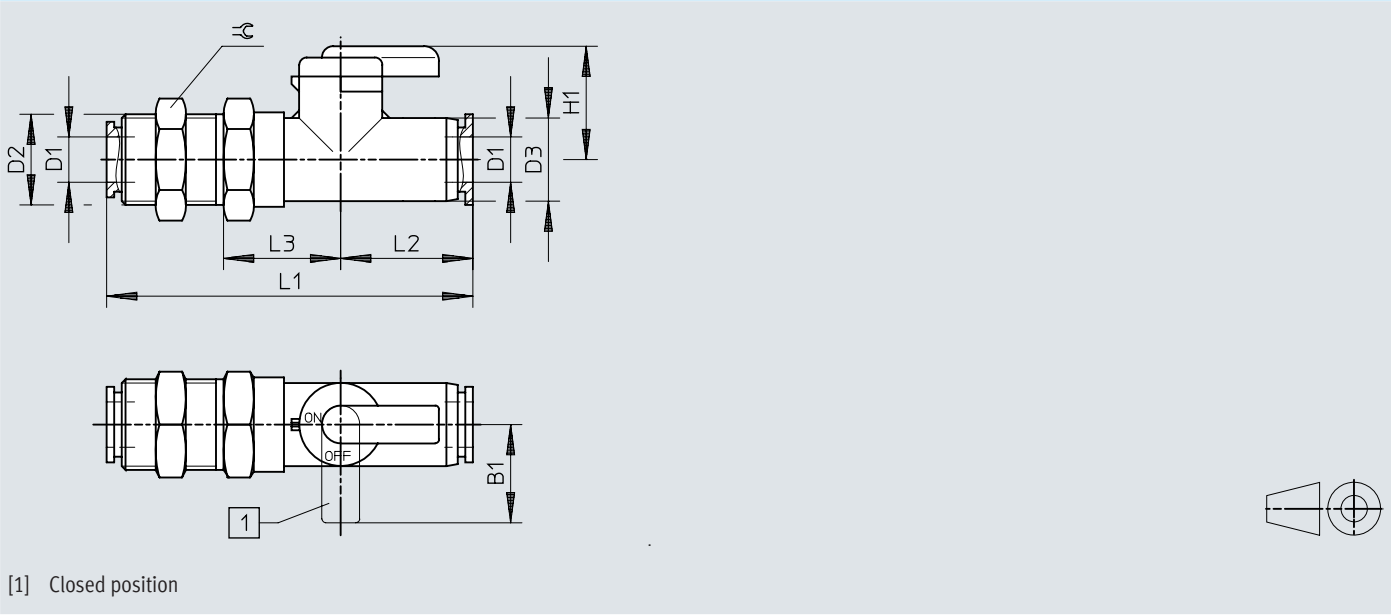
[1] Closed position



	B1	D1 Ø	D2	D3 Ø	H1	L1	L2	L3	L4	L5	T1	⌀
QH-QS-4-1/8	5	4	R1/8	11,1	13	41,2	17,2	13	20	8	11,6	10
QH-QS-6-1/8		6				41,3	17,3				11,9	

Dimensions


Dimensions – Bulkhead fitting, push-in connector at both ends Download CAD data [www.festo.com](http://www.festo.com)




	B1	D1 Ø	D2	D3 Ø	H1	L1	L2	L3	≡
QHS-QS-6	13	6	M12x1	11	15	48,5	17,5	15,5	14

## Ordering data


## Ordering data – Push-in connector both sides

	Pneumatic connection, port 1	Pneumatic connection, port 2	Standard nominal flow rate (standardised to DIN 1343)	Product weight	Part no.	Type
	QS-4	QS-4	148 l/min	12 g	<b>153483</b>	<b>QH-QS-4</b>
	QS-6	QS-6	533 l/min		<b>153484</b>	<b>QH-QS-6</b>

## Ordering data – Male thread/push-in connector

	Pneumatic connection, port 1	Pneumatic connection, port 2	Standard nominal flow rate (standardised to DIN 1343)	Product weight	Part no.	Type
	R1/8	QS-4	235 l/min	14 g	<b>153486</b>	<b>QH-QS-4-1/8</b>
		QS-6	560 l/min		<b>153487</b>	<b>QH-QS-6-1/8</b>

## Ordering data – Bulkhead fitting, push-in connector at both ends

	Pneumatic connection, port 1	Pneumatic connection, port 2	Standard nominal flow rate (standardised to DIN 1343)	Product weight	Part no.	Type
	QS-6	QS-6	528 l/min	16.5 g	<b>153485</b>	<b>QHS-QS-6</b>