

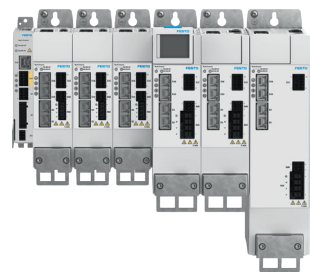
Festo Motion and I/O Products are in stock!



Your go-to list for motion control and distributed IO products readily available to ship!
Please refer to your Festo order confirmation for actual delivery lead time.

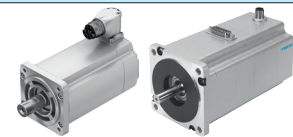


CMMT-AS Multiprotocol servo drives capable of communicating via Ethernet IP, PROFINET, EtherCAT, and Modbus all in one part number.

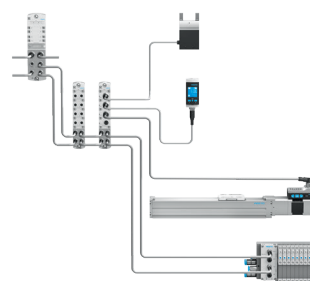


Part number	Type	Description
8063946	CMMT-ST-C8-1C-MP-S0	24-48vdc servo drive Multiprotocol
8143163	CMMT-AS-C2-3A-MP-S1	100-240v single phase servo drive Multiprotocol, 2 amp nominal
8143164	CMMT-AS-C4-3A-P3-MP-S1	100-240v single phase servo drive Multiprotocol, 4 amp nominal
8143165	CMMT-AS-C2-11A-P3-MP-S1	200-480v 3-phase servo drive Multiprotocol, 2 amp nominal
8143166	CMMT-AS-C3-11A-P3-MP-S1	200-480v 3-phase servo drive Multiprotocol, 3 amp nominal
8143167	CMMT-AS-C5-11A-P3-MP-S1	200-480v 3-phase servo drive Multiprotocol, 5 amp nominal
8143168	CMMT-AS-C7-P3-MP-S1	200-480v 3-phase servo drive Multiprotocol, 7 amp nominal
8143169	CMMT-AS-C12-P3-MP-S1	200-480v 3-phase servo drive Multiprotocol, 12 amp nominal

EMMT-AS and **EMMS-ST** servo motors. Size your servo drive solution with the EMMT-AS (120-480 VAC) and EMMT-ST (24-48 VDC) servo motors using Electric Motion Sizing [here](#).

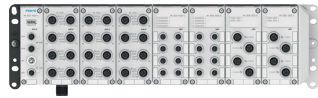


CPX-AP-I Distribute your IO where you need it. IP65 IO modules available! Connect up to 80 modules including valve terminals with up to 50m of distance in between!



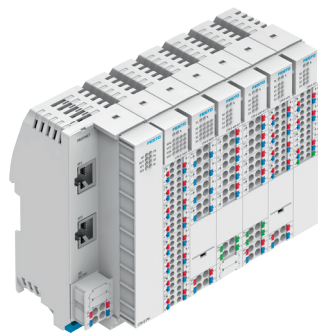
Part number	Type	Description
8086606	CPX-AP-I-4AI-U-I-RTD-M12	4 channel analog input module
8086603	CPX-AP-I-4DI4DO-M12-5P	4 digital input/4 output module, M12
8086601	CPX-AP-I-4DI4DO-M8-3P	4 digital input/4 output module, M8
8086605	CPX-AP-I-4DI-M8-3P	4 digital input module, M8
8086604	CPX-AP-I-4IOL-M12	4 channel IO-Link Master
8086602	CPX-AP-I-8DI-M12-5P	8 digital input module, M12
8086600	CPX-AP-I-8DI-M8-3P	8 digital input module, M8
8086609	CPX-AP-I-EC-M12	EtherCAT interface
8086610	CPX-AP-I-EP-M12	EtherNet/IP interface
8086608	CPX-AP-I-PB-M12	PROFIBUS interface
8086607	CPX-AP-I-PN-M12	PROFINET interface

CPX-AP-A A machine mountable IO solution in IP65. Connects with the CPX-AP-I distributed IO solution. **Orders typically delivered fully configured within 4-6 weeks from Germany.**



Part number	Type	Description
8129111	CPX-AP-A-12DI4DO-M12-5P	12 digital input/4 output module
8129112	CPX-AP-A-16DI-D-M12-5P	16 digital input module
8129109	CPX-AP-A-8DI-M12-5P	8 digital input module
8129114	CPX-AP-A-4IOL-M12	4 channel IO-Link Master
8129110	CPX-AP-A-8DO-M12-5P	8 digital output module
8129243	CPX-AP-A-EC-M12	EtherCAT interface
8112476	CPX-AP-A-EPL	Left end plate
8112477	CPX-AP-A-EPR	Right end plate
8129244	CPX-AP-A-EP-M12	EtherNet/IP interface
8129245	CPX-AP-A-PN-CU	PROFINET interface
8129241	CPX-AP-A-PN-M12	PROFINET interface
8129256	CPX-AP-A-S-1-M12-5P	System supply
8129253	CPX-AP-A-S-1-PP-5P	System supply
8129261	CPX-AP-A-S-2-M12-5P	System supply
8129251	CPX-AP-A-SB	Interlinking module

CPX-E - An in-cabinet IP20 centralized IO control solution. Can be used as a motion controller with added IO or solely as a remote IO solution communicating to a 3rd party PLC.



Part number	Type	Description
5237644	CPX-E /-EX1E	Automation system
4080492	CPX-E-16DI	Digital input module
4827505	CPX-E-1CI	Counter module
4080493	CPX-E-4AI-U-I	Analog input module
4080494	CPX-E-4AO-U-I	Analog output module
4080495	CPX-E-4IOL	IO-Link master module
4080491	CPX-E-8DO	Digital output module
5226780	CPX-E-CEC-C1	Motion controller point-to-point EtherCAT
4252742	CPX-E-CEC-C1-EP	Motion controller point-to-point EtherNET IP
4252741	CPX-E-CEC-C1-PN	Motion controller point-to-point PROFINET
5266781	CPX-E-CEC-M1	Interpolated motion controller EtherCAT
4252744	CPX-E-CEC-M1-EP	Interpolated motion controller EtherNET IP
4252743	CPX-E-CEC-M1-PN	Interpolated motion controller PROFINET
4080498	CPX-E-EC	EtherCAT bus module
4080499	CPX-E-EP	EtherNET IP bus module

Contact your Sales Representative today for specification support for your application!