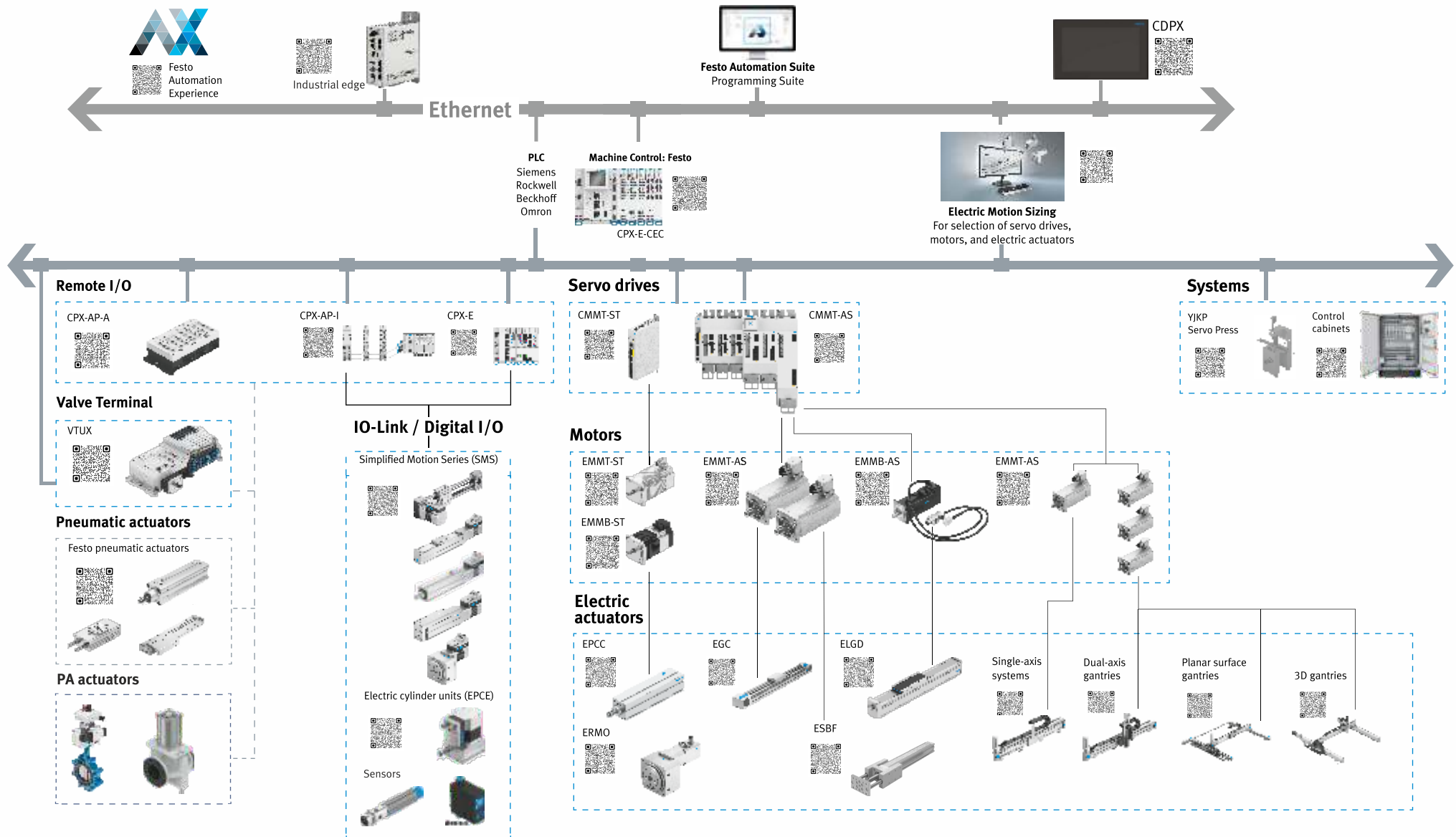


Festo Automation Platform

Controlled solutions via:



Motion Control and I/O Product Portfolio

Controlled solutions via:



EtherNet/IP



IO-Link



Servo Drive **CMMT-AS & -ST**



Range 300W – 12kW
24 VDC-480 VAC



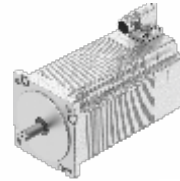
IP65 Servo Motor **EMMT-AS**



120 – 480 VAC
60-190 mm frame sizes



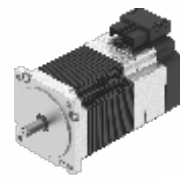
IP65 Stepper Motor **EMMT-ST**



24-48 VDC
absolute encoder
NEMA 17, 23, and 34



IP40 Stepper Motor **EMMB-ST**



24-48 VDC
absolute encoder
NEMA 17, 23, and 34



IP67 I/O & Valve Terminal **CPX-AP-A**



Centralized I/O and Valve Terminal
Daisy-chain to additional I/O and devices



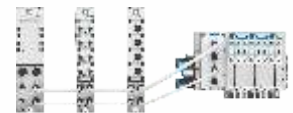
IP20 I/O **CPX-E**



Remote I/O
Optional addition of Motion Controller



IP67 I/O **CPX-AP-I**



Decentralized I/O
Daisy-chain to Valve Terminal



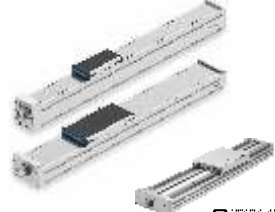
Toothed Belt Actuators **ELGD & EGC**



Up to 8.5 m long
Narrow and wide model frames



Ballscrew Actuators **ELGD & EGC**



Up to 3,000 N force
Narrow and wide model frames



Simplified Motion Series Portfolio



Simple end-to-end positioning and press via I/O
I/O Link control for multi-positioning



Handling Guide Online Portfolio



1, 2 and 3-D gantries fully assembled or shipped in kits
Includes cable management and all accessories



IP40 Rod Style Actuator **EPCC**



500 mm max stroke
Up to 1 kN max thrust



IP65 Rod Style Actuator **ESBF**



1,500 mm max stroke
Up to 17 kN max thrust



*Size all actuators, motors and drives via [Electric Motion Sizing](#):

