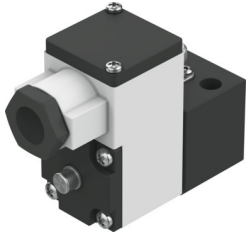


Pilot valve MGXIAH-3/2-H-T-0.8-24DC-EX

Part number: 8118347

FESTO



 [General operating condition](#)

Data sheet

Feature	Value
Valve function	3/2-way, closed, monostable
Type of actuation	Electric
Operating pressure	-0.09 MPa ... 0.8 MPa
Operating pressure	-0.9 bar ... 8 bar
Operating pressure	-13.05 psi ... 116 psi
Design	On/off valve
Type of reset	Mechanical spring
CE mark (see declaration of conformity)	To EU Explosion Protection Directive (ATEX)
Explosion protection certification outside the EU	EPL Da (CN) EPL Da (IECEX) EPL Ga (CN) EPL Ga (IEC-EX)
Certificate issuing authority	ATEX: CML 17 ATEX 2046X IEC: IECEx CML 17.0030X
ATEX category gas	II 1G
ATEX category dust	II 1D
Explosion ignition protection type for gas	Ex ia IIC T6...T5 Gb
Explosion ignition protection type for dust	Ex ia IIIC T135°C Db
Explosion ambient temperature	-40 °C ≤ Ta ≤ 50 °C / 65 °C
Degree of protection	IP65
Manual override	Non-detenting
Flow direction	Non-reversible
Symbol	00991308
Duty cycle	100%
Insulation material class	H
Max. input power Pi	-55°C ~ +50°C T6 = 2.98W -55°C ~ +65°C T5 = 1W -55°C ~ +65°C T5 = 2.98W -55°C ~ +65°C T6 = 1W
Max. input voltage Ui	31 V
Max. input current Ii	0.67 A
Characteristic coil data	24 V DC: 1.5 W
Effective internal inductivity Li	Negligibly low
Effective internal capacitance Ci	Negligibly low
Permissible frequency fluctuations	+/- 10%

Feature	Value
Explosion protection	Zone 0 (ATEX) Zone 0 (CN) Zone 0 (IEC-EX) Zone 1 (ATEX) Zone 2 (ATEX) Zone 20 (ATEX) Zone 20 (CN) Zone 20 (IEC-EX) Zone 21 (ATEX) Zone 22 (ATEX)
Operating medium	Compressed air to ISO 8573-1:2010 [7:4:4]
Note on operating and pilot medium	Lubricated operation possible (in which case lubricated operation will always be required)
Corrosion resistance class CRC	2 - Moderate corrosion stress
LABS (PWIS) conformity	VDMA24364 zone III
Ambient temperature	-55 °C ... 80 °C
Type of mounting	CNOMO
Note on materials	RoHS-compliant