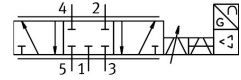


# Proportional directional control valve MPYE-5-1/8-LF-420-B

FESTO

Part number: 161978



[PDF General operating condition](#)

## Data sheet

Feature	Value
Nominal size	4 mm
Type of actuation	Electrical
Sealing principle	Hard
Mounting position	Any
Design	Piston gate valve
Type of reset	Magnetic spring
Safety instructions	Safety position MPYE: if the power supply cable is blocked, the valve assumes the closed mid-position.
Type of piloting	Direct
Flow direction	Non-reversible
Symbol	00995308
Valve function	5/3-way, closed
Reverse polarity protection	For setpoint value
Operating pressure	0 MPa ... 1 MPa
Operating pressure	0 bar ... 10 bar
b value	0.12
C value	1.65 l/sbar
Standard nominal flow rate (standardised to DIN 1343)	350 l/min
Limit frequency	95 Hz
Max. hysteresis	0.4 %
Operational voltage range DC	17 V ... 30 V
Residual ripple	5%
SETPOINT/ACTUAL values	Current type 4-20 mA
Approval	RCM
KC mark	KC-EMV
CE mark (see declaration of conformity)	To EU EMC Directive In accordance with EU RoHS Directive
UKCA marking (see declaration of conformity)	To UK RoHS instructions
Operating medium	Compressed air to ISO 8573-1:2010 [6:4:4]
Note on operating and pilot medium	Lubricated operation not possible
Corrosion resistance class CRC	2 - Moderate corrosion stress
LABS (PWIS) conformity	VDMA24364-B2-L
Media temperature	5 °C ... 40 °C
Degree of protection	IP65
Ambient temperature	0 °C ... 50 °C
Product weight	285 g

<b>Feature</b>	<b>Value</b>
Electrical connection	M12x1 Plug Round design
Type of mounting	With through-hole
Pneumatic connection, port 1	G1/8
Pneumatic connection, port 2	G1/8
Pneumatic connection, port 3	G1/8
Pneumatic connection, port 4	G1/8
Pneumatic connection, port 5	G1/8
Note on materials	RoHS compliant
Material cover	ABS coated
Material seals	NBR
Material housing	Aluminium anodised