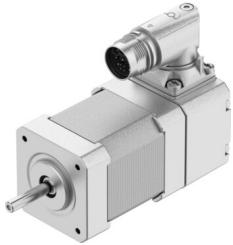


Stepper motor EMMT-ST-42-L-RS

Part number: 8156168

FESTO



 General operating condition

Data sheet

Feature	Value
Ambient temperature	-15 °C ... 40 °C
Note on ambient temperature	Up to 80°C with derating -2%/°C
Max. installation height	4000 m
Note on max. installation height	As of 1,000 m: only with derating of -1.0% per 100 m
Storage temperature	-20 °C ... 70 °C
Relative air humidity	Non-condensing
Conforms to standard	IEC 60034
Temperature class as per EN 60034-1	B
Max. winding temperature	130 °C
Rating class as per EN 60034-1	S1
Motor type to EN 60034-7	IM V1 IM V3
Mounting position	optional
Degree of protection	IP40
Note on degree of protection	IP40 Motor shaft IP65 for motor housing, incl. connection technology
Interface code, motor out	42A
Electrical connection 1, connection type	Hybrid plug
Electrical connection 1, connector system	M17x0.75
Electrical connection 1, number of connections/cores	12
Electrical connection 1, connection pattern	00997532
Note on materials	RoHS-compliant
Corrosion resistance class CRC	0 - No corrosion stress
LABS (PWIS) conformity	VDMA24364 zone III
Vibration resistance	Transport application test with severity level 2 to FN 942017-4 and EN 60068-2-6
Shock resistance	Shock test with severity level 2 to FN 942017-5 and EN 60068-2-27
Approval	RCM trademark c UL us - Recognized (OL)
CE mark (see declaration of conformity)	To EU EMC Directive In accordance with EU RoHS Directive
UKCA marking (see declaration of conformity)	To UK RoHS instructions
Certificate issuing authority	UL E342973
Nominal operating voltage DC	48 V
Number of pole pairs	50
Motor holding torque	0.63 Nm
Nominal torque	0.54 Nm

Feature	Value
Peak torque	0.63 Nm
Nominal rotary speed	1000 rpm
Max. rotational speed	3200 rpm
Max. mechanical speed	9000 rpm
Stepper angle for complete step	1.8 deg
Stepping angle tolerance	±5%
Nominal power rating of motor	56 W
Continuous stall current	3.7 A
Nominal motor current	3.4 A
Peak current	4 A
Motor constant	0.162 Nm/A
Voltage constant, phase	10.6 mVmin
Phase winding resistance	0.6 Ohm
Phase winding inductance	0.8 mH
Winding longitudinal inductivity Ld (phase)	1.45 mH
Winding cross inductivity Lq (phase)	0.8 mH
Electric time constant	1.3 ms
Thermal time constant	16 min
Thermal resistance	2 K/W
Measuring flange	200 x 200 x 15 mm, steel
Total mass moment of inertia of output	0.082 kgcm ²
Product weight	560 g
Permissible axial shaft load	10 N
Permissible radial shaft load	28 N
Rotor position sensor	Absolute single-turn encoder
rotor position sensor, manufacturer designation	Festo iC-MHM
rotor position sensor, absolute detectable revolutions	1
Rotor position encoder interface	BiSS-C
Rotor position sensor, encoder measuring principle	Magnetic
rotor position sensor, DC operating voltage	5 V
rotor position sensor, DC operating voltage range	4.75 V ... 5.25 V
Rotor pos. enc., sin/cosin p/r	2
rotor position sensor, position values per revolution	65536
Rotor position transducer resolution	16 bit
rotor position sensor, system accuracy of angle measurement	-540 arcsec ... 540 arcsec
Mean time to failure (MTTF), subcomponent	106 years, rotor position encoder