

CoDeSys Embedded Controller CPX-CEC

FESTO



Complete Automation on the Same Platform

Automation Programming in Accordance with IEC 61131-3

As an intelligent remote I/O terminal in IP65/IP67 directly on the machine, this embedded controller CPX-CEC reduces installation costs. It is ideally adapted for pneumatics and motion applications with up to 31 electric drives.

Better Performance, Reduced Costs

CPX-CEC offers fast cycle times of 1ms. Integrated CANopen master allows integration of pneumatics, electric drives and I/O on the same compact controller. Most fieldbus options available. The comprehensive CoDeSys function library takes care of diagnostics and condition monitoring options.

Simple and Efficient: Decentralized Structures

The modular I/O system with up to 512 I/O and its CAN-Master functionality offers complete flexibility. Whether it is an open- and closed- loop control stand-alone for economical automation (e.g. of manual work stations) or remote control with pre-processing.

Simply Unique in IP65

CPX-CEC: The holistic automation platform for standard, proportional and servo-pneumatics, sensors and motion control in IP65.

CPX-CEC.PSI.US

Product Short Information

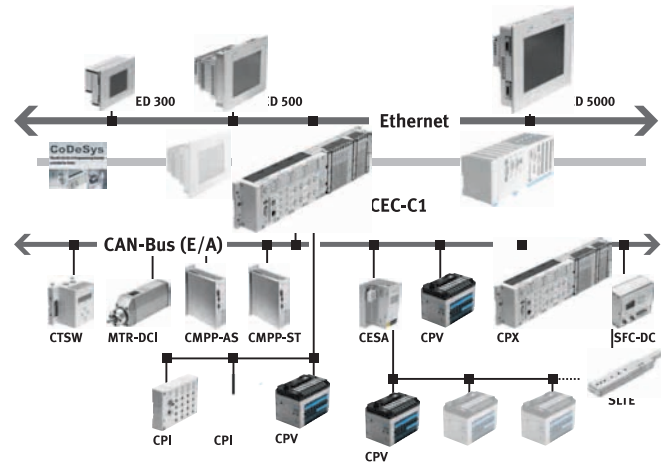
CoDeSys Embedded Controller CPX-CEC

CPX-CEC Functions

- PLC control for valve terminal configurations with MPA, VTSA
- Connection to all fieldbuses as an intelligent slave to provide local processing
- PLC with CANopen master as standard for activation of electric drives or any CANopen device
- Diagnostics with flexible monitoring possibilities for pressure, flow rate, cylinder run time, air consumption, early warnings and visualization options

- Activation of decentralized installation systems on the basis of CPI
- Activation of applications of proportional pneumatics
- Servo-pneumatic applications
- AS-interface control via Gateway

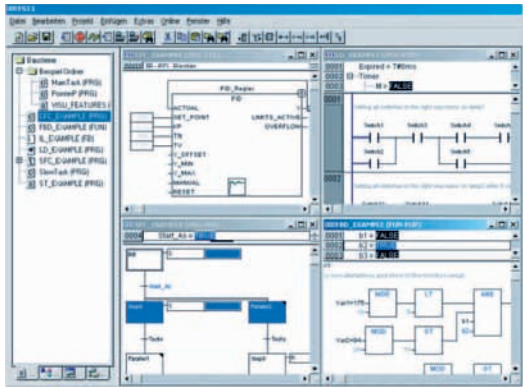
CPX-CEC variants:
 RS232: CPX-CEC
 CANopen master: CPX-CEC-C1



Software Platform CoDeSys

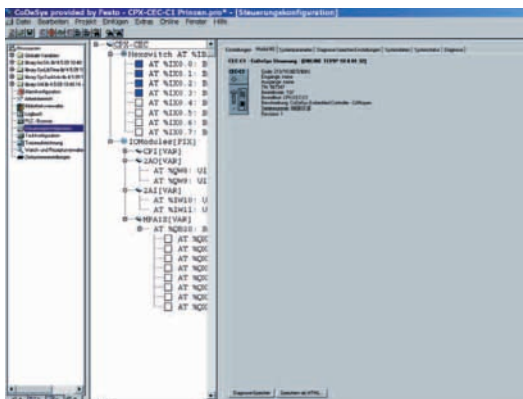
CoDeSys makes your life easier with simple commissioning, fast programming and

parameterization – standardized programming of control systems to IEC 61131 - 3 standard.



Technical data	
Processor	32 bit MIPS, 400 MHz
Data memory	32 MB Flash / 32 MB RAM
User memory	20 MB Flash / 8 MB RAM
Remanent memory	32 KB
Communication network	Ethernet 10/100 Base-T
Fieldbus master	CANopen master as standard with CPX-CEC-C1
PLC operating system	CoDeSys 2.3 Full RTS version
Communication interface	RS 232 optional, only with CPX-CEC
MMI	Handheld for CPX terminal can be connected
Operation	All FEDs can be connected via Ethernet
Visualization	OPC server for connection to any SCADA packages
Networking	All fieldbus modules of the CPX terminal: Profibus, ProfiNet, Ethernet IP, DeviceNet Modbus TCP, CANopen, Interbus, EtherCAT
Other	All modules of the CPX terminal are supported

Project Engineering with Control Configuration inside CoDeSys



Festo Corporation

For ordering assistance, or to find your nearest Festo Distributor,
Call: 1.800.99.FESTO
Fax: 1.800.96.FESTO
Email: customer.service@us.festo.com
Visit: www.festo.com/us

For technical support,
Call: 1.866.GO.FESTO
Fax: 1.800.96.FESTO
Email: product.support@us.festo.com