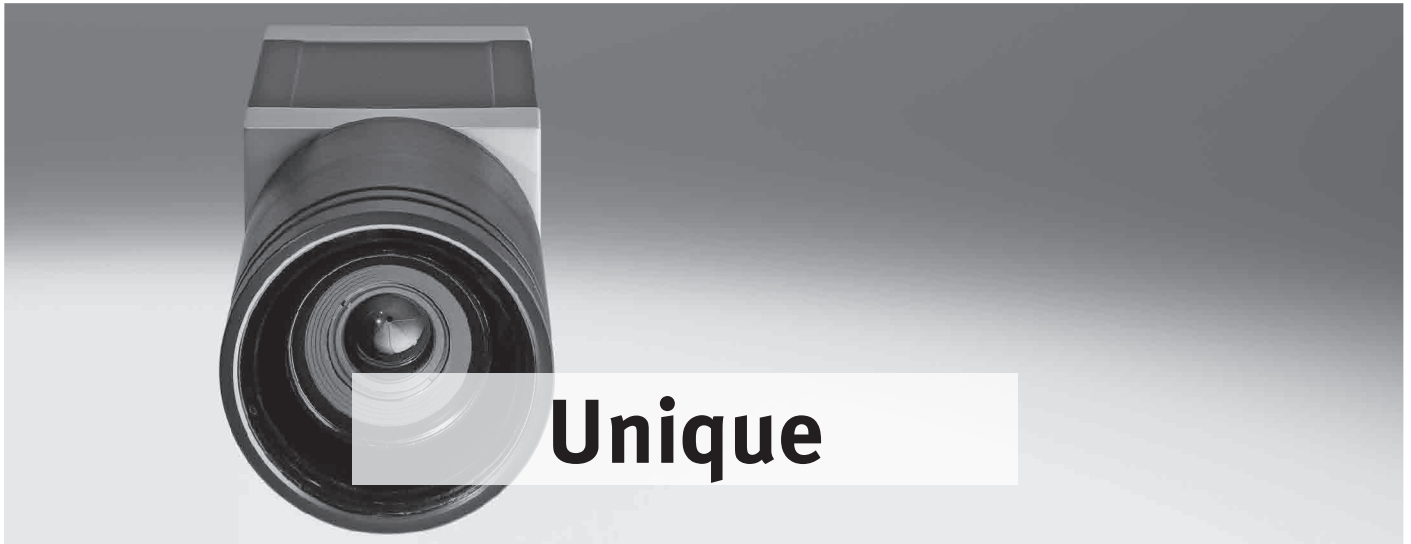


Intelligent compact vision system SBOC-M-R1B-H

FESTO



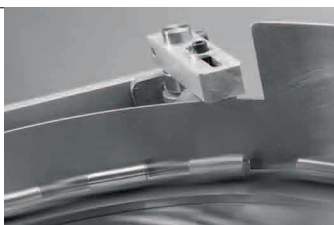
Modern automation systems are generally designed for high-speed production, with which the human eye has difficulty keeping pace. Festo offers the intelligent Compact Vision System SBOC-M as an aid to diagnostics and commissioning and for the functional monitoring of fast motion sequences. This is an innovative and inexpensive alternative to classic high-speed cameras.

Enhanced productivity:

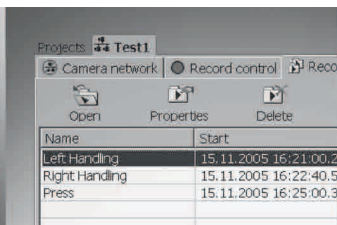
Simplified fault localisation thanks to reliable analysis and diagnosis of individual or periodic high-speed motion sequences. Easy to work with and set up to obtain optimum monitoring. Provides a highly cost-effective solution for many applications, from commissioning and servicing through to preventive maintenance.

Advanced technology:

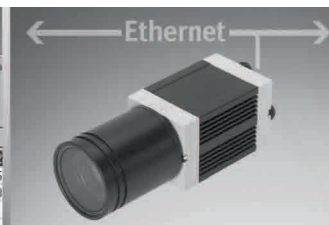
Compact design with integrated electronics for detection and storage of motion sequences. The system's small dimensions and low weight mean it can easily be integrated into existing installations. Commissioning is uncomplicated and is carried out using PC software.



High speed



Documentation



Networking

Intelligent compact vision system

SBOC-M-R1B-H

In focus: The technology

- High sampling rate of 240 – 2100 images/sec.
- Several cameras can be networked and synchronised via Ethernet
- Recording of I/O characteristics via the integrated I/O
- Extremely compact dimensions
- Protection class IP65/IP67



SBOC-M-R1B-H

New: Systainer for secure transport and storage

Everything in its place and stored securely with the Systainer SBOA-MSY-R1B-H. Its contents:

- The new camera SBOC-M-R1B-H
- A high-end zoom lens
- Energy-saving low-power LED light (84 W/9000 lumens)
- Power supply unit (110V/230V) including international plug adapter and further accessories such as 2 tripods, software, cables etc.



SBOA-MSY-R1B-H

General technical data

Type	SBOC-M-R1B-H
Lens mount	C-Mount
Working distance [mm]	Depends on selected lens
Field of view [mm]	Depends on selected lens
Sensor resolution [Pixel]	640 x 480
Frame rate/full frame [fps]	240
Exposure time	1 µs–1000 ms
Protection class	IP65/IP67
Bus connection	Ethernet 100 Mbit/s; M12
Temperature range [°C]	–10 ... +50
Dimensions (W x H x L) [mm] (including lens protector tube)	45 x 45 x 139,4



Festo AG & Co. KG

Ruiter Strasse 82
73734 Esslingen
www.festo.com
Tel. +49 711 347-0
Fax +49 711 347-2144
service_international@festo.com
www.festo.com