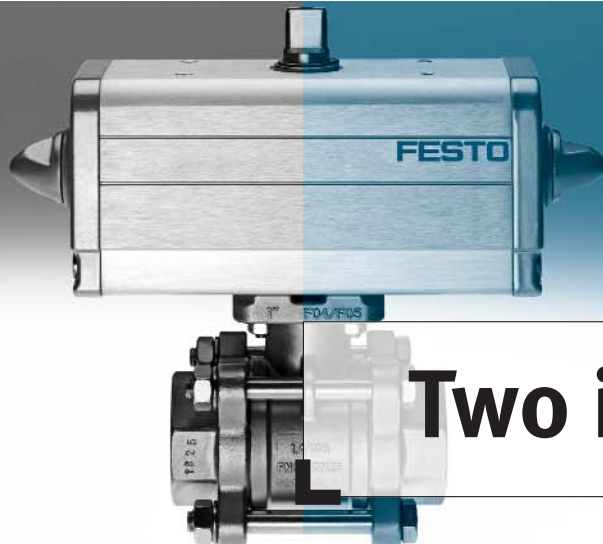


Ball valve drive unit VZPR

FESTO



Two in one!

Now fully integrated in the system: Two bestsellers unite!

Customer favourites for years, and now combined as one – the VAPB ball valve series and the DAPS quarter-turn actuator series are now available as an integrated system: VZPR. Featuring adapted torque and direct assembly, the system represents an unbeatable package bringing with it clear cost benefits.

Plug and process ...

... making configuration calculations for drive and ball valves a thing of the past. Just order the right pre-sized unit and assemble it in the system!

Expanded horizon ...

... with the 2 1/2" variants.

Brass and stainless steel ...

... can be selected for all ball valve drive units.

Adapted torque ...

... for reliable opening and closing, including unsurpassed flexibility: a range of drive sizes is available where different diameters are required, thus avoiding problems with over-sizing.



Two-in-one!



Pre-sized



Value for money

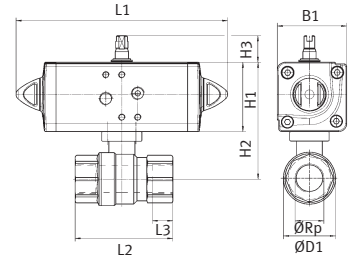
910.4.PSI →

Product Short Information

Ball valve drive unit VZPR

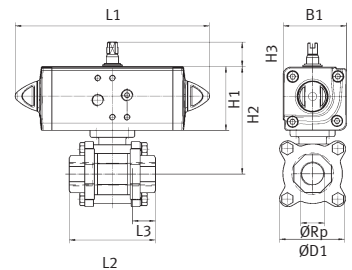
Dimensions, brass

Type	B1	ØD1 max	ØRp	H1	H2	H3	L1	L2	L3
VZPR-BPD-22-R14	52.2	35	Rp1/4"	52.2	92.2	20	159	75	15
VZPR-BPD-22-R38	52.2	35	Rp3/8"	52.2	92.2	20	159	75	15
VZPR-BPD-22-R12	52.2	35	Rp1/2"	52.2	92.2	20	159	75	15
VZPR-BPD-22-R34	59.2	45	Rp3/4"	59.2	104.2	20	174	80	16
VZPR-BPD-22-R1	59.2	55	Rp1"	59.2	104.2	20	174	90	19
VZPR-BPD-22-R114	70.4	65	Rp1 1/4"	70.4	130.2	20	198	110	21
VZPR-BPD-22-R112	70.4	75	Rp1 1/2"	70.4	135.4	20	198	120	21
VZPR-BPD-22-R2	83.3	90	Rp2"	83.3	158.3	20	236.5	140	25
VZPR-BPD-22-R212	107.5	110	Rp2 1/2"	107.5	192.5	30	189.9	143	24



Dimensions, stainless steel

Type	B1	B2 max	ØRp	H1	H2	H3	L1	L2	L3
VZPR-BPD-22-R14R	59.2	50	Rp1/4"	59.2	104.2	20	174	60	14
VZPR-BPD-22-R38R	59.2	50	Rp3/8"	59.2	104.2	20	174	60	14
VZPR-BPD-22-R12R	59.2	50	Rp1/2"	59.2	104.2	20	174	75	20
VZPR-BPD-22-R34R	59.2	50	Rp3/4"	59.2	104.2	20	174	80	19
VZPR-BPDH-22-R34R	70.4	50	Rp3/4"	70.4	115.4	20	198	80	19
VZPR-BPD-22-R1R	70.4	50	Rp1"	70.4	125.4	20	198	90	21
VZPR-BPD-22-R114R	70.4	50	Rp1 1/4"	70.4	130.4	20	198	110	23
VZPR-BPDH-22-R114R	83.3	75	Rp1 1/4"	83.3	130.4	20	236.5	110	23
VZPR-BPD-22-R112R	83.3	85	Rp1 1/2"	83.3	130.4	20	236.5	120	25
VZPR-BPDH-22-R112R	107.5	85	Rp1 1/2"	107.5	130.4	30	289.9	120	25
VZPR-BPD-22-R2R	107.5	100	Rp2"	107.5	130.4	30	289.9	140	28
VZPR-BPD-22-R212R	111.1	170	Rp2 1/2"	111.1	211.1	30	313.6	185	38



Technical Data

Function	2-way ball valve: 2 parts brass, 3 parts if stainless steel with double-acting quarter-turn actuator (lever/swivel principle)
Mounting position	Any
Medium	For drive: compressed air For ball valve: compressed air, water and neutral media
Corrosion resistance classification	Drive: CRC3 Brass ball valve: CRC1 Stainless steel ball valve: CRC3
Drive operating pressure	1 ... 8.4 bar
Ball valve pressure level	Brass 1/4" ... 1 1/4": PN 40 bar Brass 1 1/2" ... 2 1/2": PN 25 bar Stainless steel 1/4" ... 2 1/2": PN 63 bar
Permissible storage temperature	-20°C ... +150°C depending on operating pressure
Air connection for solenoid valve	As per Namur (VDI/VDE 3845)

Festo AG & Co. KG

Ruiter Straße 82
73734 Esslingen
Internet www.festo.de
Telefon +49 (0) 180/303 11 11
Telefax +49 (0) 7 11/347-20 71
E-mail infoservice@festo.com

Subject to change

200405