

Intelligent Compact Vision System SBOC-Q/SBOI-Q

FESTO



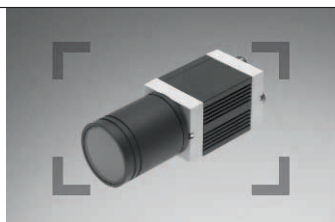
Increased system availability using a vision system. The intelligent Compact Vision System SBOC-Q/SBOI-Q from Festo ensures 100% quality inspection, even where there is an enormous variety of part types. Whether it's used for orientation detection of small parts, the measurement of turned parts, the precision positioning of drives or the location of objects for the control of handling equipment, the intelligent vision system provides reliable inspection results for a broad range of applications.

Tailor-made diagnostics

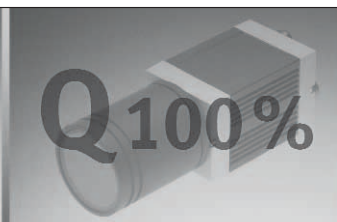
Compact design and low weight make these cameras an ideal quality-inspection tool. They are impressively uncomplicated to integrate into existing systems and very easy to commission by means of parameterisation. The systems' ability to "learn" up to 256 workpieces means maximum flexibility with regard to setting-up.

All inclusive:

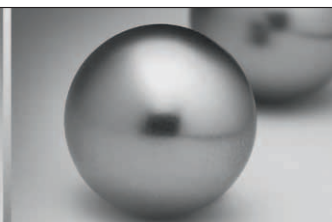
Already integrated into the system are not only the imaging sensor system to generate image data but also a complete electronic evaluation unit and interfaces (Ethernet/ CAN) for communication with master controllers (PLCs).



More compact



Zero error rate



Even with unstable workpieces

505.1.PSI →

Product Short Information

Intelligent Compact Vision System

SBOC-Q/SBOI-Q

Spotlight on technology

- Standard software interfaces for Ethernet and CAN and integrated 24 V I/Os
- Sensor resolution 640 x 480 or 1,280 x 1,024 pixels (monochrome and colour)
- Very short exposure times: The vision system can be used even when the workpiece is travelling at high speed or the camera or workpiece is vibrating
- Compact dimensions, low weight
- IP65, IP67



SBOC-Q



SBOI-Q

General technical data

	SBOC-Q-R1B	SBOC-Q-R1C	SBOI-Q-R1B	SBOI-Q-R1C	SBOC-Q-R2B	SBOC-Q-R2C
Sensor resolution [pixels]	640x480				1280x1024	
Exposure time [ms]	0.039 ... 1000				0.008 ... 1000	
Frame rate (full image) [fps]	150				27	
Lens mounting	C mount		Integrated lens		C mount	
Sensor type	Monochrome	Colour	Monochrom	Colour	Monochrome	Colour
Operating distance [mm]	Dependent on the lens selected		22 ... 1000		Dependent on the lens selected	
Field of vision [mm]	Dependent on the lens selected		14 x 10 ... 520x390		Dependent on the lens selected	
Max. no. of test programmes	256					
Sorting function	Up to 16 types per test programm					



Overview of applications

- Detection of position and rotary orientation of workpieces
 - Fine positioning of axes
 - 2-D quality inspections
 - Workpiece type identification
- Systems include integrated sorting function.

Festo AG & Co. KG

Ruiter Strasse 82
 73734 Esslingen
 www.festo.com
 Tel. +49 711 347-0
 Fax +49 711 347-2144
 service_international@festo.com