

# Proportional-pressure regulator VPPE

FESTO



## Proportional-pressure regulator with excellent characteristics for simple control tasks.

A new product with an excellent entry-level price which will please everyone. Except the competition! After all, you only pay for what you really need: reduced to the most essential functions or with complex functionality. And you get a reliable proportional valve that is easy to operate.

Compact design, ready for use in a variety of different applications, particularly where an optimal cost-benefit ratio is a primary consideration.

### Sturdy design

At the high protection class IP65 and with high EMC resistance that goes far beyond Festo's reliable standard.

### Tailored to many areas of application

The VPPE is ideal for almost any sector or application where the

price-conscious are looking for a solution.

### New to the VPPE with display

- Menu prompting
- Display switch-off
- Setting of the pressure range
- Password protection
- 3 presets retrievable
- Digital electronic control
- Exhaust flange turnable
- P rails compatible

**In other words an optimal price-performance ratio that sets standards.**



Simply connect in series ...

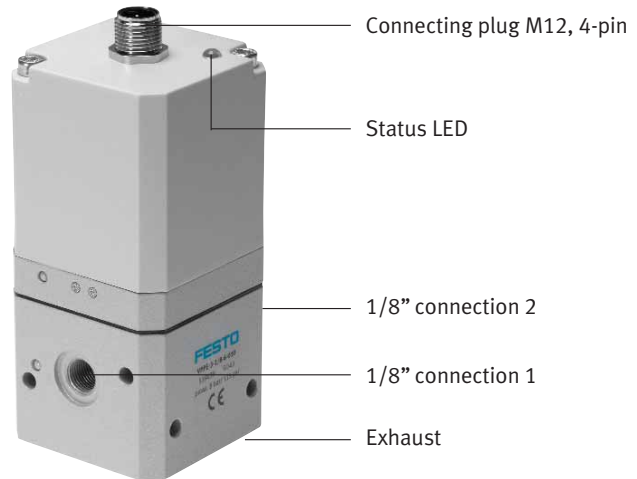
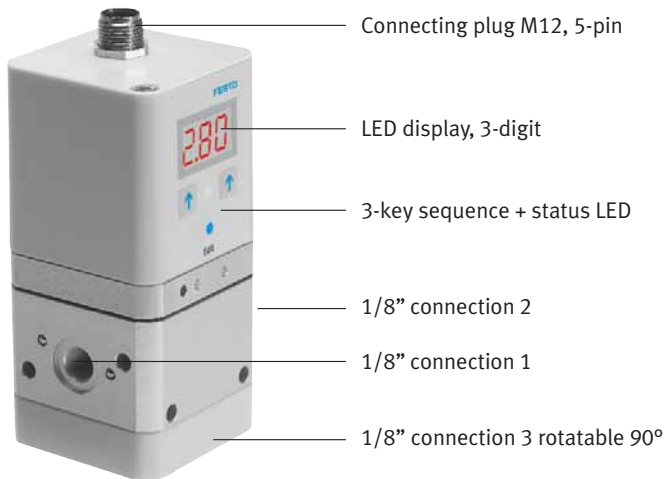
hook up ...

and display

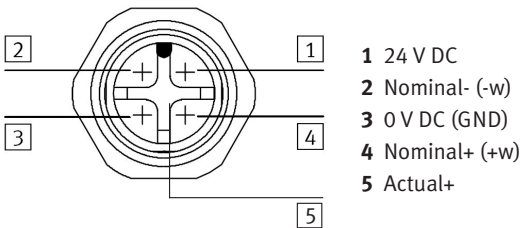
239.1.PSI →

Product Short Information

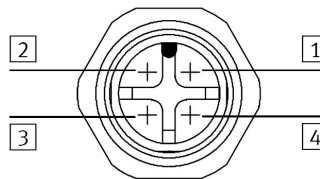
# Proportional-pressure regulator VPPE



Pin allocation for M12, 5-pin

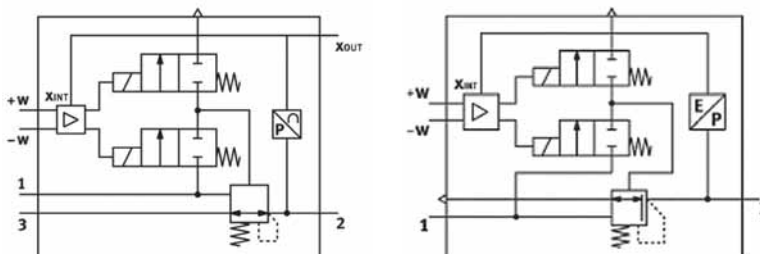


Pin allocation for M12, 4-pin



Technical data	VPPE-3-1-1/8-6-010-E1T	VPPE-3-1/8-6-010
Operating medium	Filtered unlubricated air (40 µm)	Filtered unlubricated air (40 µm)
Max. operating pressure p1	11 bar rel.	8 bar rel.
Output pressure p2	0,02 ... 2 bar, 0,06 to 6 bar, 0,1 to 10 bar	0,06 ... 6 bar
Flow rate	1500 nl/min at 6 bar with ref. to p1 = 10 bar	1200 nl/min at 6 bar with ref. to p1 = 8 bar
Nominal diameter	Ventilation 5 mm, exhaust 2.5 mm	Ventilation 5 mm, exhaust 2.5 mm
Electrical connection	M12 plug connector 5-pin	M12 plug connector 4-pin
Setpoint value	Analogue 0 ... 10 V or 4 to 20 mA	Analogue 0 ... 10 V
Actual value	Analogue 0 ... 10 V, 4 ... 20 mA or digital	-
Nominal current	0.05 A	0.05 A
Max. current	0.15 A	0.15 A
Duty cycle	100 %	100 %

## Operating principle



## Festo AG & Co. KG

Ruiter Strasse 82  
 73734 Esslingen  
[www.festo.com](http://www.festo.com)  
 Tel. +49 711 347-0  
 Fax +49 711 347-2144  
[service\\_international@festo.com](mailto:service_international@festo.com)