

Soft start/quick exhaust valve VABF for ISO valve terminal VTSA

FESTO



More integrated safety in the VTSA valve terminal: the solenoid actuated soft-start/quick exhaust valve VABF.

The quick to install, integrated solution for direct placement on applications from the modular VTSA system.

Safety from the start

Output pressure is built up slowly and the initial position of downstream cylinders and equipment is reached gradually thus ensuring safe start-up. Pressure build-up is application-specific thanks to the switch-over pressure and filling time setting.

Safety plus!

When supplying systems or system components with air. Even more safety for separately, defined pressure zones via the sensor function directly on the valve terminal.

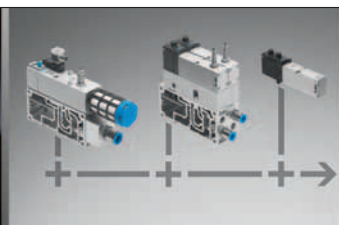
Safety standard!

As a globally unique standard product, it not only ensures correct and complete configuration as with the modular system, but also simplified ordering and logistics.

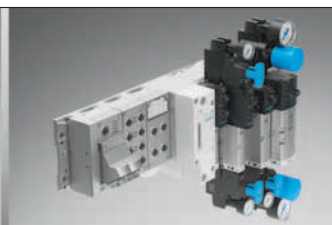
Suitable for all ISO1 manifold blocks. Valve and sensors equipped with M12 connection technology offer great advantages to the automobile industry. Last but not least: a sensor monitors the actuated piston spool position.



Safety function



+ Function integration



= VTSA: Safety@Festo

242.4.PSI →

Product Short Information

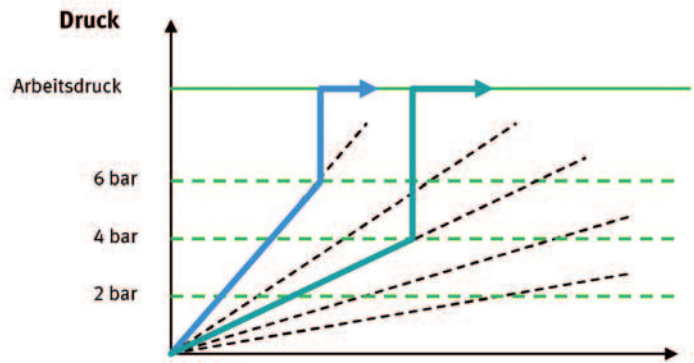
Soft start/quick exhaust valve VABF for ISO valve terminal VTSA

Function

The soft start/quick exhaust valve is actuated separately electrically independently of a multi-pin/fieldbus connection, it is equipped with a pilot valve and a type C square plug, also available with an M12 adapter. The soft-start valve can alternatively be ordered with a sensor. This sensor (M12, PNP or NPN) monitors whether the valve has switched and thus whether the valve

terminal is being supplied with working air. If the soft-start valve has not been actuated the compressed air supply (channel 1 of the terminal) is exhausted via the soft-start valve.

The pressure build-up can be set optimally to the individual application using adjusting screws via the switch-over pressure and the filling time.

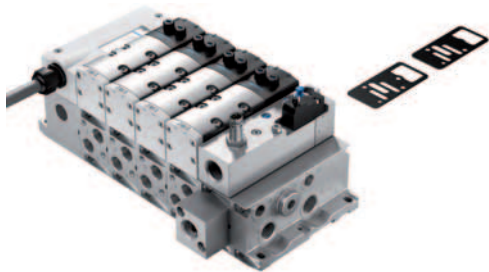


The soft-start valve can be configured in one or several pressure zones on the terminal. Up to 5 soft-start valves can be integrated in a terminal.

Configuration of pressure zones

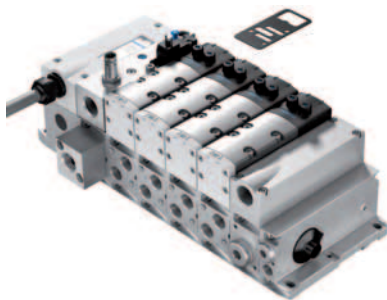
One pressure zone

with internal pilot air supply via the soft-start valve or with external pilot air supply via the right-hand end plate



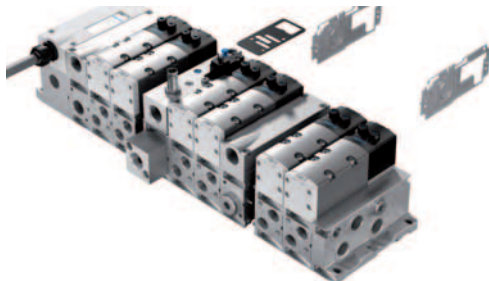
One pressure zone

with external pilot air supply via the right-hand end plate with selector



Several pressure zones

with internal or external pilot air supply via the right-hand end plate, soft-start valve in the central pressure zone



Technical data

Valve function	Pressure build-up/quick exhausting
Design	Piston spool
Pneumatic connection	G1/2, NPT1/2
Pressurising flow rate	3,000 l/min
Exhaust flow rate	3,300 l/min
Operating pressure range	2 ... 10 bar
Pilot air	Internal supply via the soft-start valve Internal/external supply via the right-hand end plate
Switch-over pressure	preset to 4 bar 2 ... 10 bar adjustable
Temperature range	-5 ... 50 °C
Operating voltage	24 V DC, 110 V AC
Electrical connection	Type C square plug, optionally with M12 adapter (only 24 V DC)
Protection class	IP65
Grid dimension	43 mm (ISO -1)
Manual override	Non-detenting
Sensor design	SIEN
Sensor type	Without N/O contact, PNP-switching, M12, 24 V DC N/O contact, NPN-switching, M12, 24 V DC

Complete safety!

Everything from a single source – in the field of safety technology, we also endeavour to offer solutions for all safety-related issues in the form of components, or to supply and implement the appropriate systems.

Festo AG & Co. KG

Ruiter Strasse 82
73734 Esslingen
www.festo.com
Tel. +49 711 347-0
Fax +49 711 347-2144
service_international@festo.com