

Intelligent Compact Vision System SBOC-Q-R3..-WB / SBOI-Q-R3..-WB

FESTO



Increased system availability using a vision system: The intelligent Compact Vision Systems SBOC-Q/SBOI-Q from Festo represent 100 % quality inspection even for a broad range of test objects. Whether it's used for orientation identification of small parts, the measurement of turned parts, the precision positioning of drives or the location of objects for the control of handling equipment, the intelligent vision system provides reliable inspection results for a broad range of applications.

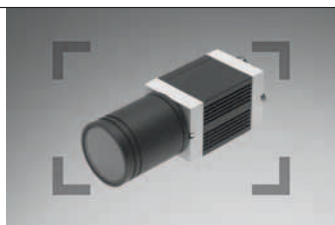
Price follows function:

The Compact Vision System SBOx-Q-R3x-WB offers the ideal solution when the task in hand is less demanding on the checking speed and a CAN bus interface is not required.

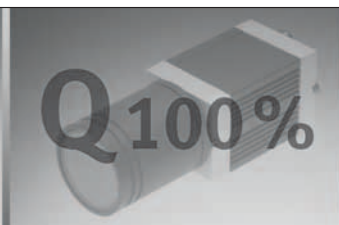
It operates both monochromatically and in colour using a very sensitive WideVGA sensor (752 x 480 pixels). The SBOx-Q-R3x-WB is available as a version with integrated lens and lighting or with C mount lens mounting without lighting.

Made-to-measure diagnostics

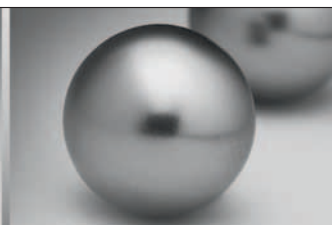
The vision system is distinguished by the compact, industry standard design and standardised interfaces for the simple integration into a machine concept. Its low weight means it can be mounted on an end effector and is able to move with it – even at high speeds. Parametrisation makes it easy to put into operation and up to 256 workpieces can be taught in, therefore offering maximum conversion flexibility.



More compact



Zero error rate



Even with unstable workpieces

505.2.PSI →

Product Short Information

Intelligent Compact Vision System SBOC-Q-R3..-WB / SBOI-Q-R3..-WB

In focus: the technology

- Standardised Ethernet software interfaces and integrated 24 V I/O
- Sensor resolution 752 x 480 pixels (monochrome and colour)
- High light sensitivity
- Extremely short exposure time: The vision system can be used even when the workpiece is travelling at high speed or the camera or workpiece is vibrating.
- Compact dimensions, low weight
- IP65, IP67



SBOC-Q



SBOI-Q

General technical data

	SBOC-Q-R3B-WB	SBOC-Q-R3C-WB	SBOI-Q-R3B-WB	SBOI-Q-R3C-WB
Sensor resolution [pixels]	752 x 480			
Exposure time [ms]	0.018 - 200			
Frame rate (full image) [fps]	60			
Lens mounting	C mount		Integrated lens	
Sensor type	Monochrome	Colour	Monochrome	Colour
Working distance [mm]	Dependent on the lens selected		20 - 550 mm	
Field of vision [mm]	Dependent on the lens selected		7.9 x 5.5 ... 195 x 125	
Max. no. of inspection programs	256			



Overview of

areas of application

- Position and rotational position sensing of workpieces
 - Fine positioning of axes
 - 2-D quality inspection
 - Type identification
- Including: Integrated sorting function

Festo AG & Co. KG

Ruiter Strasse 82
73734 Esslingen
www.festo.com
Tel. +49 711 347-0
Fax +49 711 347-2144
service_international@festo.com