

# Pilot valves VOFC/VOFD

FESTO



## Tough

**Highly corrosion resistant and extremely reliable:** the VOFC and VOFD pilot valves. Thanks to their sturdy construction, ATEX protection for zone 1/21 G/D and SIL certification for ESD applications, these valves are ideally suited to heavy usage in pharmaceutical, chemical and petrochemical plants.

### Extremely sturdy and corrosion resistant

The tough enamel surface of the valve housing offers long-lasting protection against corrosion and mechanical stress.

### Maximum economy

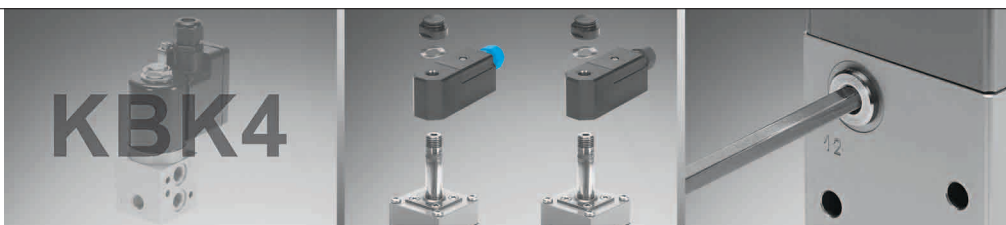
One type, one part number with two functions – internal and external pilot air functions have been integrated in a single valve for the first time! One valve – two connection options: NAMUR connections for direct installation on a drive as well as G and NPT threaded connections.

### Flexible functionality

Whether internal or external pilot air is needed, the valve can simply be converted by turning a screw! Depending on the function required the pressure connection is a pressure supply port or vacuum port independent of the working pressure.

### Quick installation

No tubing required – the VOFD and VOFC can be installed directly on a drive. The armature guide tube makes it easy to combine a coil with the appropriate valve.



Extremely sturdy!

ATEX protection as required!

Internal/external pilot air!

910.13.PSI →

Product Short Information

# Pilot valves VOFC/VOFD

## Advantages at a glance

- Sturdy and extremely corrosion resistant
- Armature guide tube makes it easy to combine the required coil with the appropriate valve
- ATEX protection for zone 1/21 (gas and dust)
- Direct installation on a drive
- VOFC: low power consumption even for fieldbus actuation of indirectly actuated valves
- VOFC: can be operated with internal and with external pilot air
- VOFD: extremely reliable for directly actuated valves, in particular for emergency shut-down functions (ESD)

## Main applications:

- Actuation of butterfly valves, cylinders, diaphragm drives and rotary drives
- Emergency shut down function: safety valve, safety shut-off valve which safely moves the drive to the switching position and closes
- For safety-orientated systems up to Safety Integrity Level 4 (SIL 4) as per IEC 61508



Pilot valve VOFD



Pilot valve VOFC

## Technical data

Valve type	VOFD	VOFC
Type of actuation	Directly actuated	Indirectly actuated
Valve type	3/2-way valves	3/2-way valves Single and double solenoid 5/2-way valves
Design	Armature guide tube Poppet valve technology	Armature guide tube Poppet valve technology/piston spools
Pressure range	0 ... 10 bar	2 ... 8 bar
Functions	Any multi-purpose pressure supply port	Operation with internal and external pilot air (for in-line version) via integrated shuttle valve
Connection options	G1/4; NPT1/4; G1/4 and NAMUR	G1/4; G1/4 und NAMUR; NPT1/4; G1/4 and G1/2; 1/2 NPT and NAMUR
Solenoid coils available for valve actuation	24, 110, 230 V DC, AC, UC	24, 110, 230 V DC, UC
Temperature range for Low Demand Mode [°C]	-25 ... +60	-25 ... +60
ATEX protection	Ex me and Ex d ATEX	Ex me and Ex ia ATEX
KBK class	4	4

## Festo AG & Co. KG

Ruiter Strasse 82  
73734 Esslingen  
www.festo.com  
Tel. +49 711 347-0  
Fax +49 711 347-2144  
service\_international@festo.com