

# Inductive proximity sensor SIES-8M

**FESTO**



## For 8 mm groove

**Unique:** the inductive proximity sensor SIES-8M is the only inductive sensor on the market which is flush mounted in a 8 mm groove. The advantages are: simple mounting and adjustment.

### Multi-functional

The SIES-8M can be used as a position sensor for electric drives EGC. It can also be used to sense the finger position on pneumatic grippers and for sensing the position of metallic objects.

### Flexible

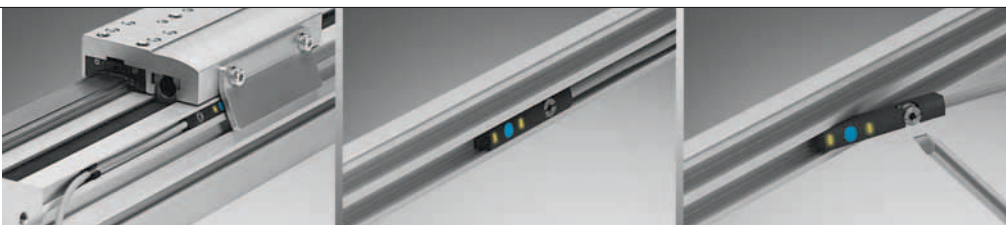
Drives with different lengths require sensors with different cable lengths. The standard lengths provided for the SIES-8M are 0.3-10 m, with or without a plug connector.

### Safe

Its robust and simple central mounting ensures that the sensor fits securely in the 8 mm groove. This also protects it against mechanical influences. The advantage: it saves space as the sensor sits neatly in the groove.

### Reliable

Thanks to its patented double LED, one LED is always visible when the sensor is attenuated, regardless of the direction of movement of the component being sensed. Mounting the sensor in the groove allows more convenient, faster and more reliable adjustment than with similar externally mounted sensors.



2 LEDs for good visibility

Fits in the 8 mm groove

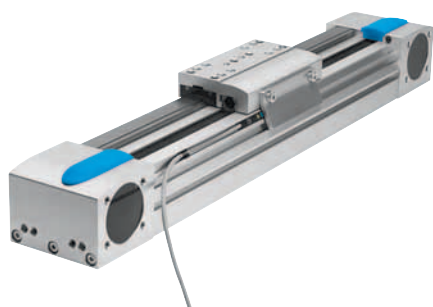
Easy to mount

330.1.PSI →

Product short information

# Inductive proximity sensor SIES-8M

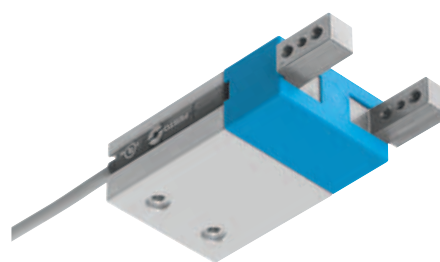
## Application examples



SIES-8M mounted on electric drive EGC



SIES-8M mounted in a 8 mm groove profile



SIES-8M mounted on a gripper

## Application in detail



Thanks to the two LEDs, one LED is always visible when the sensor is attenuated, regardless of the direction of movement of the component being sensed.

## Technical data

Switching output	3-wire PNP N/O contact 3-wire NPN N/O contact 3-wire PNP N/C contact 3-wire NPN N/C contact
Operating voltage	10 to 30 V DC
Cable quality	Standard cable, polyurethane, grey
Cable length	0.3 m 2.5 m 5.0 m 7.5 m 10 m
Connection technology	M8 rotatable thread Open end
Output status displays	2 yellow LEDs for visibility – regardless of the direction of movement of the component being sensed
Certification	CE, C-Tick
Sensing distance	1.5 mm
Sr as per EN 60947-5-2)	
Repetition accuracy	≤ ± 0.05 mm (radial)
Mounting	Flush

## Festo AG & Co. KG

Ruiter Strasse 82  
73734 Esslingen  
www.festo.com  
Tel. +49 711 347-0  
Fax +49 711 347-2144  
service\_international@festo.com