

# Proportional Pressure Regulator VPPE

**FESTO**



## Optimal Price-Performance Ratio

### Excellent Characteristics for Simple Control Tasks

Entry level priced I/P-controller with basic functions in the VPPE standard or with a full offering of features in the VPPE display. Reliable proportional valve that is easy to operate. Compact design, ready for use in a variety of different applications, particularly where an optimal cost-benefit ratio is a primary consideration.

### Sturdy Design

At the high protection class IP65 and with high EMC resistance that goes far beyond Festo reliable standard.

### Tailored to Many Areas of Application

The VPPE is ideal for almost any sector or application where the price-conscious are looking for a solution.

### New to the VPPE with Display

- Selectable units by display
- Display switch-off (ECO mode)
- Setting of the pressure range
- Password protection
- Settable control characteristics
- Digital electronic control
- Analog or digital output (configurable)
- Common supply manifold (contact Festo)

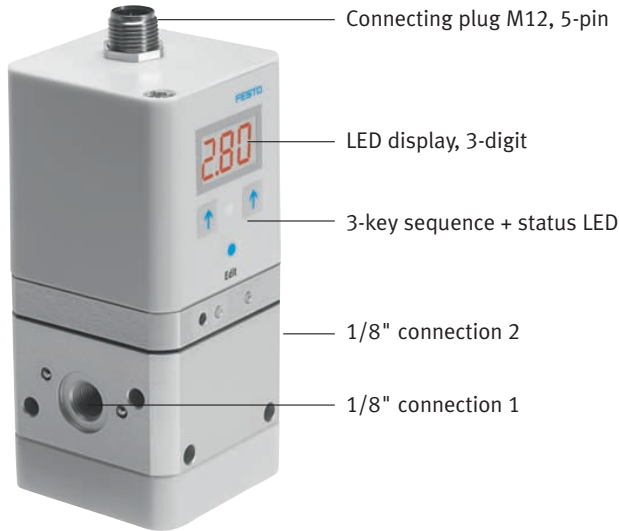
For more information: [www.festo.com/us/vppe](http://www.festo.com/us/vppe)

**VPPE.PSI.US**

Product Short Information

# Proportional Pressure Regulator VPPE

## VPPE with Display



Connecting plug M12, 5-pin

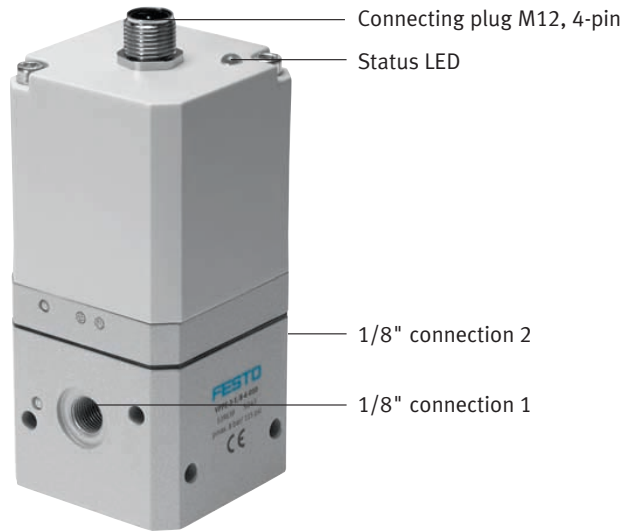
LED display, 3-digit

3-key sequence + status LED

1/8" connection 2

1/8" connection 1

## VPPE Standard



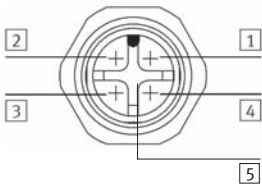
Connecting plug M12, 4-pin

Status LED

1/8" connection 2

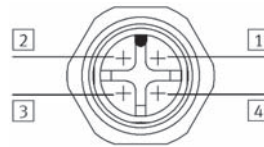
1/8" connection 1

## Pin Allocation for M12, 5-pin Plug



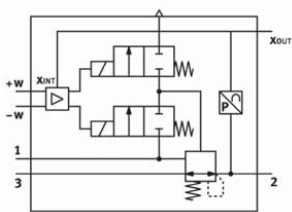
- 1 24 V DC
- 2 Nominal- (-w)
- 3 0 V DC (GND)
- 4 Nominal+ (+w)
- 5 Actual-value analog or digital

## Pin Allocation for M12, 4-pin Plug

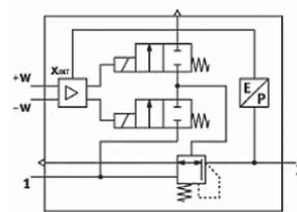


- 1 24 V DC
- 2 Nominal- (-w)
- 3 0 V DC (GND)
- 4 Nominal+ (+w)

## Operating Principle



- 1 Compressed air connection (Input)
- 2 Working air connection (Output)
- 3 Exhaust



- 1 Compressed air connection (Input)
- 2 Working air connection (Output)

Technical data	VPPE-3-1-1/8...-E1	VPPE-3-1/8-6-010 P.N. 539639
Operating medium	Filtered unlubricated air (40 µm)	Filtered unlubricated air (40 µm)
Max. operating pressure p1	11 bar rel.	8 bar rel.
Output pressure p2 [bar]	0,02 ... 2; 0,06 ... 6; 0,1 ... 10	0,06 ... 6
Flow rate [nl/min]	1250 at 10 bar with ref. to p1 = 11 bar	800 at 6 bar with ref. to p1 = 8 bar
Nominal diameter [mm]	Ventilation 5, exhaust 2.5	
Electrical connection	M12 plug connector 5-pin	M12 plug connector 4-pin
Setpoint value	Analog 0 ... 10 V or 4 to 20 mA	Analog 0 ... 10 V
Actual value	Analog 0 ... 10 V, 4 ... 20 mA or digital	-
Nominal current [A]	0.05	
Max. current [A]	0.15	
Duty cycle	100 %	

## Festo Corporation

For ordering assistance, or to find your nearest Festo Distributor,  
**Call:** 1.800.99.FESTO  
**Fax:** 1.800.96.FESTO  
**Email:** customer.service@us.festo.com  
**Visit:** www.festo.com/us

For technical support,  
**Call:** 1.866.GO.FESTO  
**Fax:** 1.800.96.FESTO  
**Email:** product.support@us.festo.com