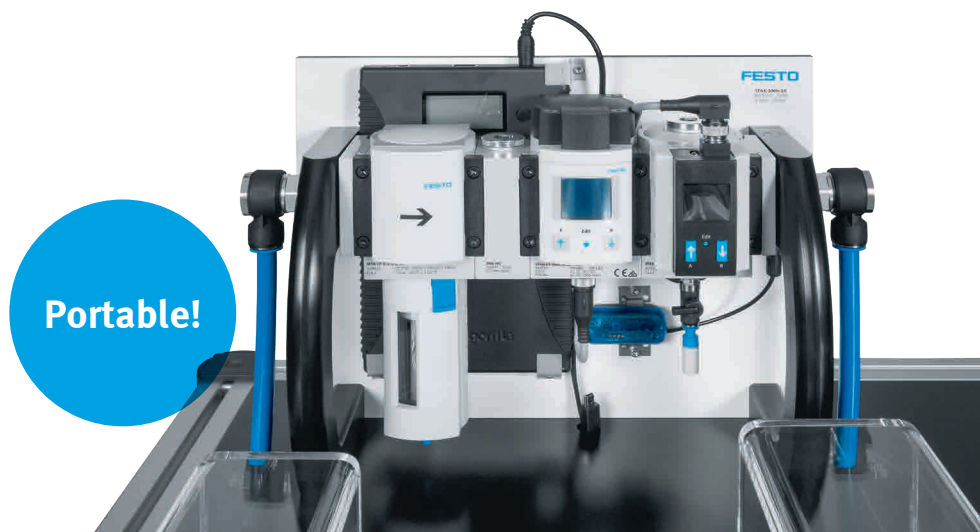


Air-flow analyser SFGA

FESTO



Efficient measurement and analysis

Highlights

- Flexible flow rate and pressure measurement with a portable analysis device with integrated, rechargeable battery
- Extremely easy transfer of the measured values to a PC for data processing and documentation
- Including operating software
- Secure and tidy storage in the carrying case

The proven plug & work concept from Festo has also inspired the design of the air-flow analyser. The ready-to-install analysis case can be used straightaway and includes everything you need for efficiently and flexibly measuring compressed air consumption and flow rates in your system.

Ideal

Measures the flow rate at the machine level during preventive maintenance of installed systems. Or documents exact consumption data for new machines – an important reference figure for a sound evaluation of the system's energy efficiency.

Flexible

A universal data logger stores pressure and flow rate values. These can be conveniently transferred to a PC after measurement has been completed, providing on-site measurement as well as in-site evaluation and documentation.

TPM-friendly

The ability to compare actual and setpoint values makes it easy to control the system, and provides solid values for preventive maintenance. Potentially undesirable trends thus become transparent.

Software included

The air-flow analyser is available with operating software for data acquisition, analysis and documentation, as well as a broad range of accessories to ensure optimised use in the field. A test certificate is available on request.

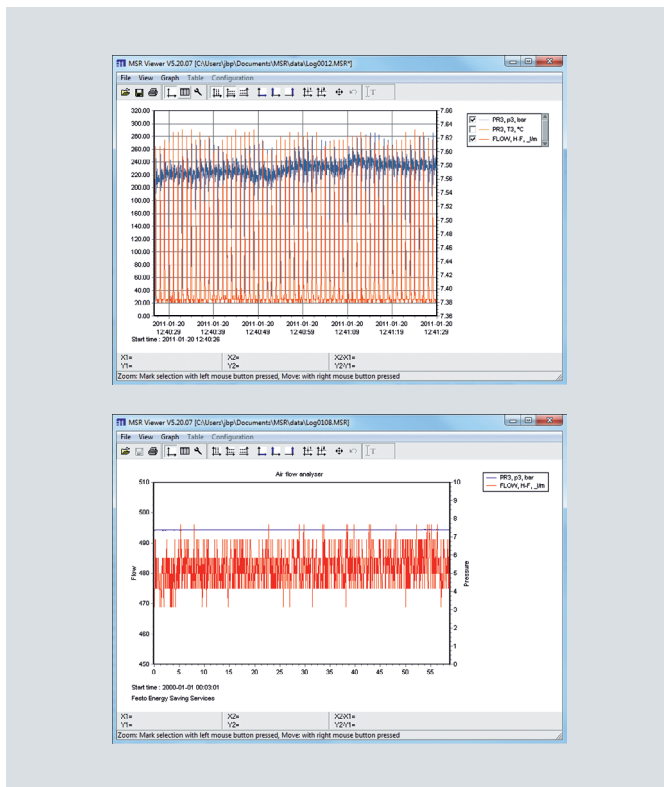
Air-flow analyser SFGA

Recording and visualising measured values with the perfect hardware-software combination

- The air-flow analyser can be installed directly into the system's air supply line
- Sensor components are protected by a 40 µ filter
- A branching module ensures laminar flow in the sensor and avoids measuring errors
- Simultaneous pressure and flow rate measurement
- Comprehensive software package
 - Data recording
 - Convenient data analysis at a Windows PC
 - Regular online updates
- High-performance, rechargeable lithium polymer battery with visual charge level indicator

Technical data

Storage temperature [°C]	+5 ... +45
Temperature of the operating medium [°C]	0 ... +40
Weight [kg]	6
Dimensions (length x width x height) [mm]	330 x 260 x 155
Power supply (via LiPo battery) [V]	24
Battery capacity [mAh]	21000
Flow range [l/min]	30 ... 3000
Accuracy zero point % FS (FullScale)	0,3
Accuracy range (pressure measurement) % FS (FullScale)	2
Pressure range [bar]	0 ... 10
Accuracy range (flow rate) % FS (FullScale)	3
Filter unit [µ]	40
Data logger	Max. measuring frequency: 10 Hz, freely selectable sampling/storage rates
	Memory capacity: 2 million measured values
	LED display for data recording and alarms
Software for acquiring and evaluating measurement data	Setup, reader, viewer and online software
	Windows 2000, XP, Vista, 7, 8
Visualisation	Using customer's own system via included software



Scope of delivery

