

Schwenkflansch SNC.../CRSNCS

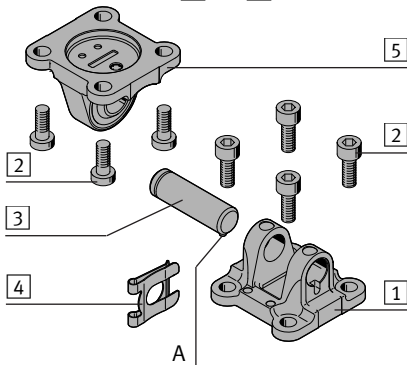
FESTO

Festo AG & Co. KG

Postfach
73726 Esslingen
Deutschland
+49 711 347-0
www.festo.com

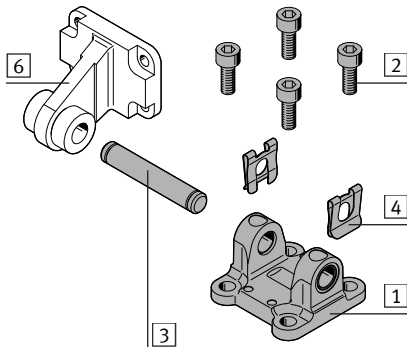
1. Teileliste

1a. Kombination: 1 mit 5



- 1 Schwenkflansch SNC/SNCB (1x)
- 2 Schraube (8x)
- 3 Bolzen (1x)
- 4 Sicherung (1x)
- 5 Schwenkflansch SNCS/CRSNCS/SNCL (1x)
- (A) Verdrehsicherungsstift (1x)

1b. Kombination: 1 mit 6



- 1 Schwenkflansch SNCS/CRSNCS/SNCB (1x)
- 2 Schraube (4x)
- 3 Bolzen (1x)
- 4 Sicherung (2x)
- Nicht im Lieferumfang:
- 6 Lagerbock LBG/LN/LNG/LSN (1x)

2. Bestimmungsgemäße Verwendung

Schwenkflansch SNC.../CRSNCS:

Schwenkbare Befestigung für Zylinder von Festo mit Lochbild nach DIN ISO 15552:2005-12.

3. Hinweise zur Montage

- Stromversorgung und Druckluft vor Montagearbeiten abschalten.
- Sicherheitshinweise beachten (→ Mitgeltende Dokumente).

i Info

Mitgeltende Dokumente

→ Bedienungsanleitung des Zylinders

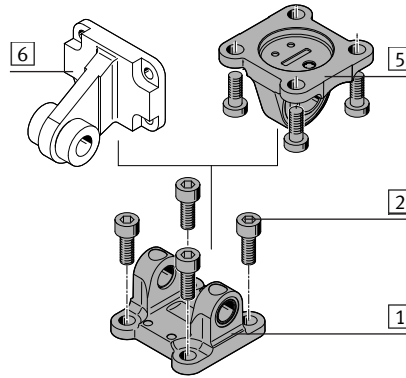
Zubehör für SNC.../CRSNCS → www.festo.com/catalogue

4. Schraubengrößen und Anziehdrehmomente M_A ¹⁾

SNC...-/CRSNCS...	32	40	50	63	80	100	125
2 Schraube	M6	M6	M8	M8	M10	M10	M12
[Nm]	4	5	8	8	10	10	24

¹⁾ Toleranz für Anziehdrehmomente M_A ohne Toleranzangabe $\pm 10\%$

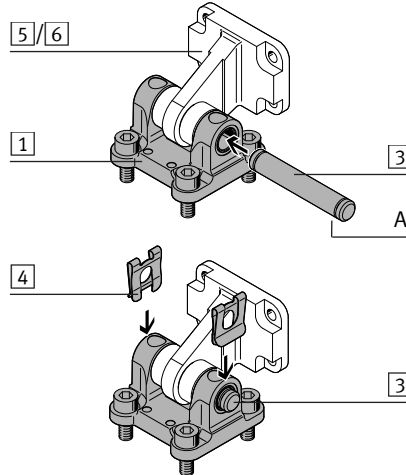
5. Montage



- Schwenkflansch 1 am passenden Zylinder platzieren.
- Schrauben 2 festdrehen. Anziehdrehmoment einhalten (→ Abschnitt 4).
- Schwenkflansch 5/Lagerbock 6 am Schwenkflansch 1 platzieren.

Kontrolle:

Die Lagerbohrungen fluchten.



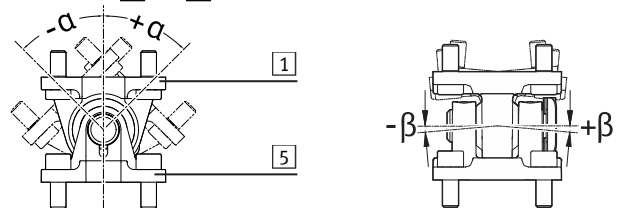
- Den Bolzen 3 in die Lagerbohrung schieben.

Bei Schwenkflansch SNC:

- Verdrehsicherungsstift (A) beachten.
- Den Bolzen 3 fixieren: Sicherungen 4 in die dafür vorgesehenen Nuten schieben.

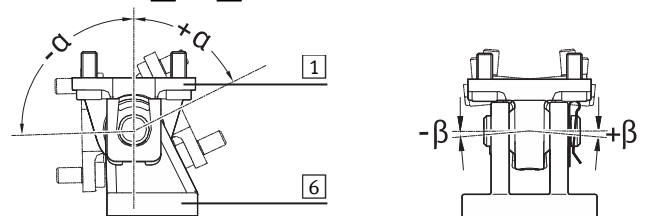
6. Mögliche Schwenkwinkel α bzw. Kippwinkel β ²⁾

6a. Kombination: 1 mit 5



		32	40	50	63	80	100	125
SNC + SNCS,	α	$\pm 55^\circ$	$\pm 56^\circ$	$\pm 46^\circ$	$\pm 52^\circ$	$\pm 43^\circ$	$\pm 42^\circ$	$\pm 44^\circ$
	β	$\pm 5^\circ$	$\pm 5^\circ$	$\pm 5^\circ$	$\pm 5^\circ$	$\pm 5^\circ$	$\pm 4,5^\circ$	$\pm 6^\circ$
SNCB + SNCL	α	$\pm 47^\circ$	$\pm 58^\circ$	$\pm 45^\circ$	$\pm 58^\circ$	$\pm 38^\circ$	$\pm 43^\circ$	$\pm 46^\circ$

6b. Kombination: 1 mit 6



		32	40	50	63	80	100	125
SNCS + LBG,	$-\alpha$	-91°	-91°	-92°	-96°	-96°	-95°	-92°
	$+\alpha$	$+67^\circ$	$+68^\circ$	$+64^\circ$	$+72^\circ$	$+72^\circ$	$+65^\circ$	$+59^\circ$
	β	$\pm 5^\circ$	$\pm 5^\circ$	$\pm 6,5^\circ$	$\pm 5,5^\circ$	$\pm 5^\circ$	$\pm 5^\circ$	$\pm 6,5^\circ$
SNCB + LN/LNG	$-\alpha$	-110°	-108°	-111°	-109°	-108°	-108°	-110°
	$+\alpha$	$+70^\circ$	$+72^\circ$	$+66^\circ$	$+78^\circ$	$+68^\circ$	$+68^\circ$	$+61^\circ$
SNCB + LSN	$-\alpha$	-106°	-112°	-108°	-108°	-111°	-107°	-109°
	$+\alpha$	$+62^\circ$	$+65^\circ$	$+60^\circ$	$+65^\circ$	$+60^\circ$	$+61^\circ$	$+42^\circ$
	β	$\pm 4^\circ$						

²⁾ Toleranz für α : $\pm 1^\circ$ und β : $\pm 0,5^\circ$

FESTO

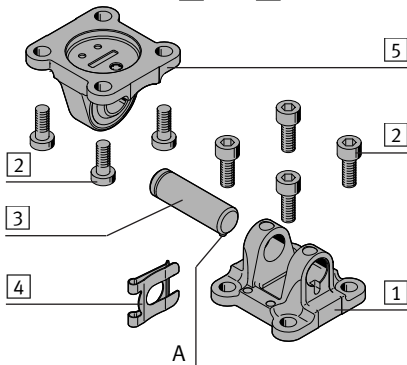
Festo AG & Co. KG

Postfach
73726 Esslingen
Germany
+49 711 347-0
www.festo.com

Swivel flange SNC.../CRSNCS

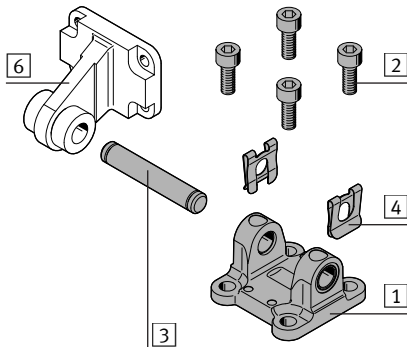
1. Parts list

1a. Combination: 1 with 5



- 1 Swivel flange SNC/SNCB (1x)
- 2 Screw (8x)
- 3 Pin (1x)
- 4 Clip (1x)
- 5 Swivel flange SNCS/CRSNCS/SNCL (1x)
- (A) Anti-twist pin (1x)

1b. Combination: 1 with 6



- 1 Swivel flange SNCS/CRSNCS/SNCB (1x)
- 2 Screw (4x)
- 3 Pin (1x)
- 4 Clip (2x)
- Not included in delivery:
- 6 Clevis foot LBG/LN/LNG/LSN (1x)

2. Intended use

Swivel flange SNC.../CRSNCS:

Swivelling mounting for cylinders from Festo with hole pattern in accordance with DIN ISO 15552:2005-12.

3. Notes on mounting

- Switch off power supply and compressed air before mounting work.
- Observe the safety instructions (→ applicable documents).

i Information

Applicable documents

→ Operating instructions of the cylinder

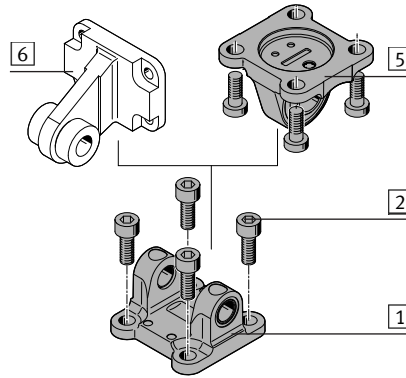
Accessories for SNC.../CRSNCS → www.festo.com/catalogue

4. Screw sizes and tightening torques M_A ¹⁾

SNC...-/CRSNCS...	32	40	50	63	80	100	125
2 Screw	M6	M6	M8	M8	M10	M10	M12
	[Nm]	4	5	8	8	10	24

¹⁾ Tolerance for tightening torques M_A without indication of tolerance $\pm 10\%$

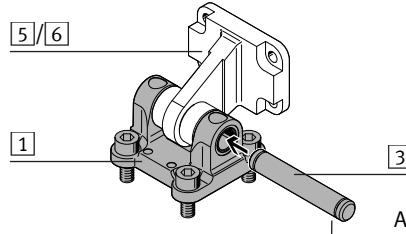
5. Mounting



- Place swivel flange 1 on the cylinder it fits.
- Tighten screws 2. Comply with the tightening torque (→ section 4).
- Place swivel flange 5/clevis foot 6 on the swivel flange 1.

Check:

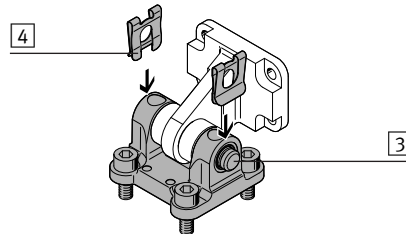
Align bearing holes.



- Push the pin 3 into the bearing hole.

For swivel flange SNC:

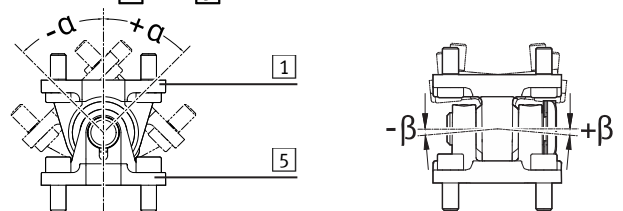
- Pay attention to anti-twist pin (A).



- Fix pin 3: Push clips 4 into the intended slots.

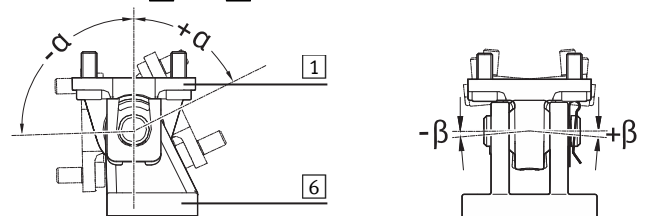
6. Possible swivel angle α or tilt angle β ²⁾

6a. Combination: 1 with 5



		32	40	50	63	80	100	125
SNC + SNCS, SNC + CRSNCS	α	$\pm 55^\circ$	$\pm 56^\circ$	$\pm 46^\circ$	$\pm 52^\circ$	$\pm 43^\circ$	$\pm 42^\circ$	$\pm 44^\circ$
	β	$\pm 5^\circ$	$\pm 5^\circ$	$\pm 5^\circ$	$\pm 5^\circ$	$\pm 5^\circ$	$\pm 4.5^\circ$	$\pm 6^\circ$
SNCB + SNCL	α	$\pm 47^\circ$	$\pm 58^\circ$	$\pm 45^\circ$	$\pm 58^\circ$	$\pm 38^\circ$	$\pm 43^\circ$	$\pm 46^\circ$

6b. Combination: 1 with 6



		32	40	50	63	80	100	125
SNCS + LBG, CRSNCS + LBG	$-\alpha$	-91°	-91°	-92°	-96°	-96°	-95°	-92°
	$+\alpha$	$+67^\circ$	$+68^\circ$	$+64^\circ$	$+72^\circ$	$+72^\circ$	$+65^\circ$	$+59^\circ$
	β	$\pm 5^\circ$	$\pm 5^\circ$	$\pm 6.5^\circ$	$\pm 5.5^\circ$	$\pm 5^\circ$	$\pm 5^\circ$	$\pm 6.5^\circ$
SNCB + LN/LNG	$-\alpha$	-110°	-108°	-111°	-109°	-108°	-108°	-110°
	$+\alpha$	$+70^\circ$	$+72^\circ$	$+66^\circ$	$+78^\circ$	$+68^\circ$	$+68^\circ$	$+61^\circ$
SNCB + LSN	$-\alpha$	-106°	-112°	-108°	-108°	-111°	-107°	-109°
	$+\alpha$	$+62^\circ$	$+65^\circ$	$+60^\circ$	$+65^\circ$	$+60^\circ$	$+61^\circ$	$+42^\circ$
	β	$\pm 4^\circ$						

²⁾ Tolerance for α : $\pm 1^\circ$ and β : $\pm 0.5^\circ$