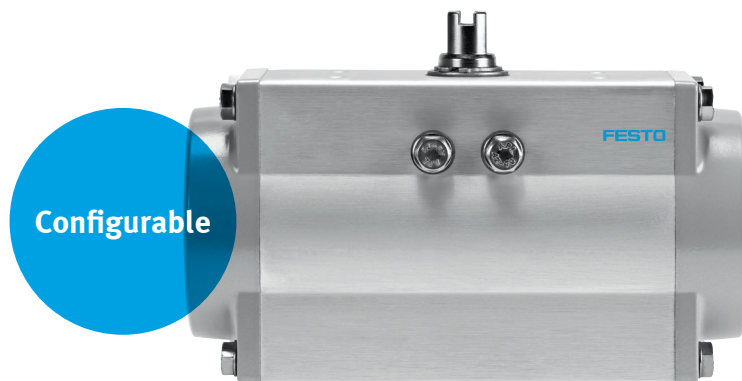


Quarter turn actuator DFPD

FESTO



Flexible in use!

Highlights

- Single-acting or double-acting
- Very compact
- Highly modular
- End position adjustable at both ends
- Optimised spring setting design
- For extreme temperatures: -50 ... +150 °C
- Mounting plate for pilot valve in EU (G) and US version (NPT)

DFPD is the new benchmark for quarter turn actuators. It can be used as an individual actuator or as part of a complete automated process valve system from Festo. With a torque range from 10 to 2.300 Nm, a rotation angle up to 180° and corrosion-resistant versions, the single- or double-acting DFPD is suitable for ball valves, butterfly valves or air dampers in the chemical, pharmaceutical and beverage industries, as well as for water treatment.

Compact and modular

The compact rack-and-pinion combination – especially in the single-acting version – is easy to install even when space is at a premium. Its range of variants, the standardised hole patterns to NAMUR VDI/VDE 3845 for pilot valves as well as the many compatible peripheral devices mean that it can be operated in a large variety of applications. In addition, both the end stop positions can be adjusted and the direction of rotation of the single- and double-acting DFPD can be selected.

Optimised spring cartridge design for simple torque adaptation

Thanks to the spring design the pressure range can be optimally set for the task in hand. This allows pressures from 2 to 6 bar to be easily set in steps of 0.5 bar.

For large temperature ranges

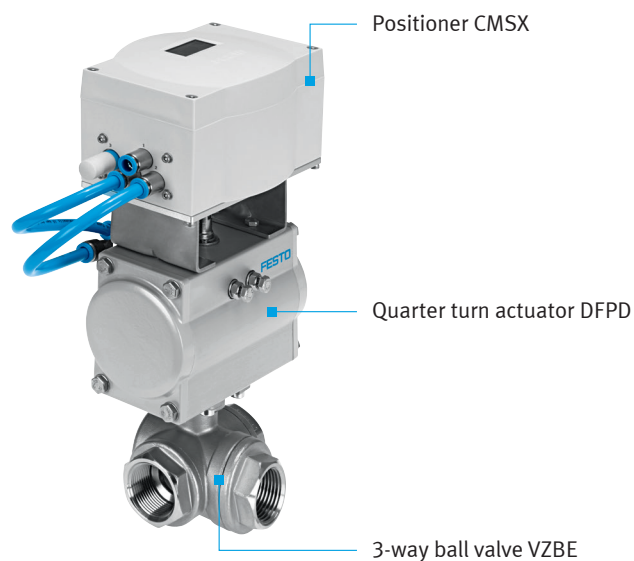
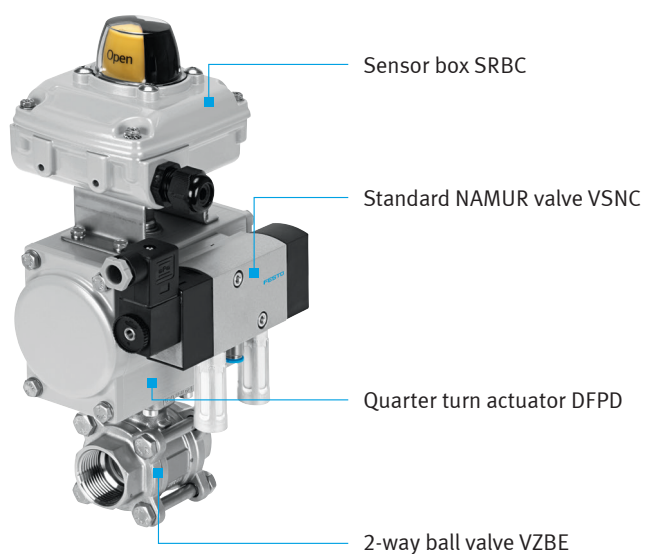
The DFPD operates reliably at extreme temperatures, with the breadth of low and high-temperature versions ranging from -50 ... +150 °C.

Quarter turn actuator DFPD

Completely automated process valves from a single supplier

When combined with a sensor box, a pilot valve or a positioner, the quarter turn actuator DFPD can be expanded into a complete

automated process valve system. This provides process reliability in the full confidence that everything fits together perfectly.



Technical data

Design	Rack and pinion	
Mode of operation	Double-acting or single-acting	
Torque (at operating pressure 6 bar) [Nm]	10 ... 2.300	
Size	10, 20, 40, 80, 120, 160, 240, 300, 480, 700, 900, 1.200, 2.300	
Operating pressure [bar]	≤ 8	
Spring pack combinations for single-acting mode of operation	9 different spring packs Combinations for operating pressure from 2 ... 6 bar (0.5 bar steps)	
Mounting position	Any	
Rotation angle [°]	Standard	90
	As an option	180 (for sizes 40, 120, 240 and 480)
End position adjustment range [°]	at 0	-5 ... +5
	at 90	+85 ... +95
Operating temperature [°C]	Standard	-20 ... +80
	High temperature	0 ... +150
	Low temperature	-50 ... +60
Version for corrosive environment	Shaft material: stainless steel, housing with epoxy coating	
Type of ignition protection for gas	II 2G c T4 X	
Type of ignition protection for dust	II 2D c 125°C X	
Safety integrity level [SIL]	Up to SIL 3 Low Demand mode	