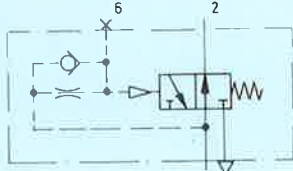


### One-shot valve

with sub-base 2n

#### Type VLK-3-PK-3



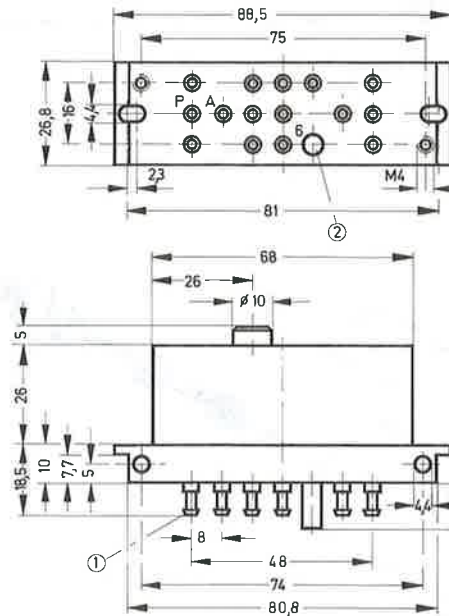
The one-shot valve generates a brief pulse from a continuous pulse.

When pressure is applied, 1 is linked to 2. Simultaneously, the pilot pressure rises via a nozzle bore and switches the valve. This causes 1 to be closed and 2 to be vented. The valve is reset only after 1 is vented.

The pulse duration is pressure-controlled and is not adjustable. It can, however, be increased by means of an additional reservoir.

#### Accessory:

Mounting frame for manifold mounting and control cabinet fitting, see sheet 6.430.

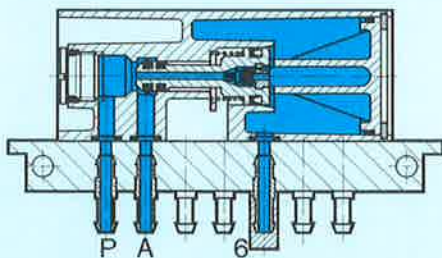
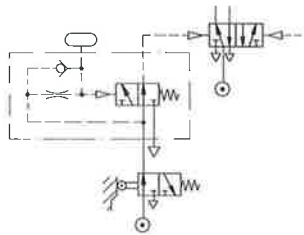


- 1 (P) = Supply port
- 2 (A) = Working or outlet lines
- 3 (R) = Exhaust
- 6 = port for additional reservoir

- ① Barbed fittings for 3 mm plastic tubing
- ② Port 6 with sealing cap for additional reservoir

In order to obtain longer pulse times, an additional reservoir can be connected to port 6, after the sealing cap is removed. Reservoir, see Type VZS, sheet 6.380.

#### Example of use:



Operating pressure bar	Pulse duration ms ( $\pm 15\%$ )		Reset time ms ( $\pm 20\%$ )	
	Series reservoir at port A		Exhaust to	
	0 cm <sup>3</sup>	100 cm <sup>3</sup>	0%	10%
2	300 (620)	350 (750)	500	200
6	210 (500)	270 (550)	500	150
8	200 (440)	250 (500)	510	160

The values in brackets correspond to an increase in reservoir capacity of 10 cm<sup>3</sup> at port 6.

Order code	Part No./Type	9639 VLK-3-PK-3
Medium		Compressed air, filtered (lubricated or unlubricated)
Design		Piston slide valve
Mounting		2 through-holes in sub-base, or on mounting frame
Connection		Barbed fittings for 3 mm plastic tubing
Nominal size		2.5 mm
Standard nominal flow rate (P → A)		90 l/min (basic valve)
Operating pressure range		2.5 to 8 bar
Pulse duration		See table above
Reset time		See table above
Temperature range		-10 to +60 °C
Materials		Housing: aluminium; sub-base: plastic, brass; seals: perbunan
Weight		0.170 kg

Wearing parts kit

For type	VLK-3-PK-3
Order code	104 218

