

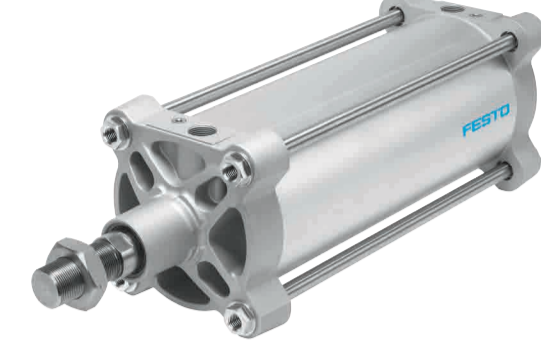
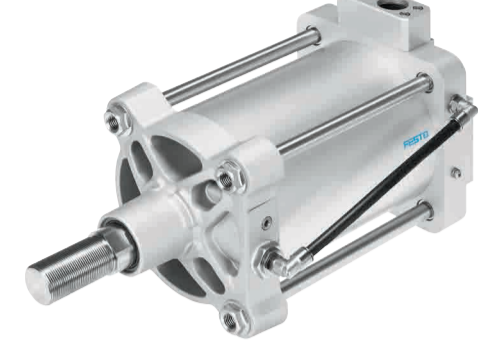



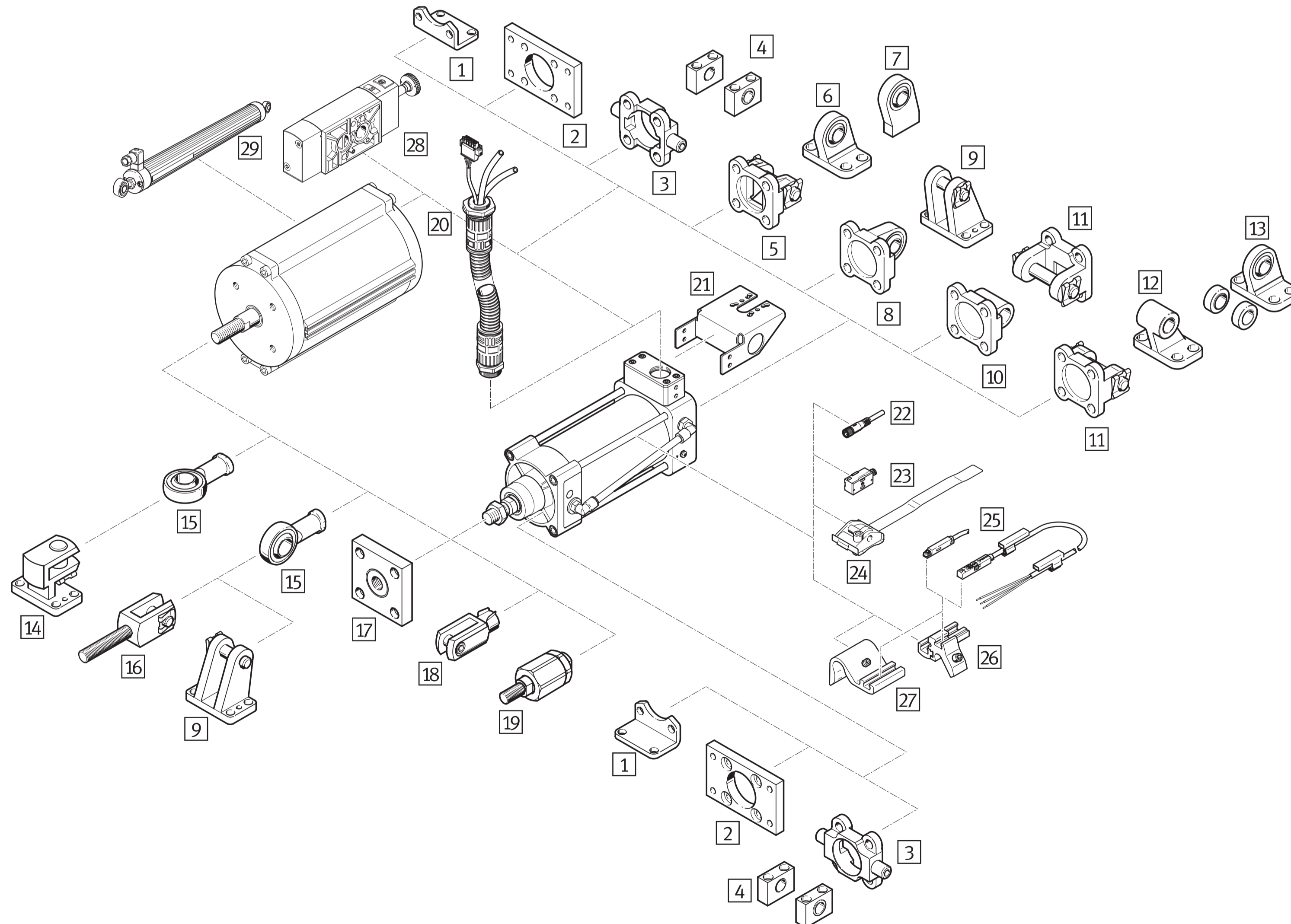
Process Automation – World of linear actuators

Linear actuators and positioners

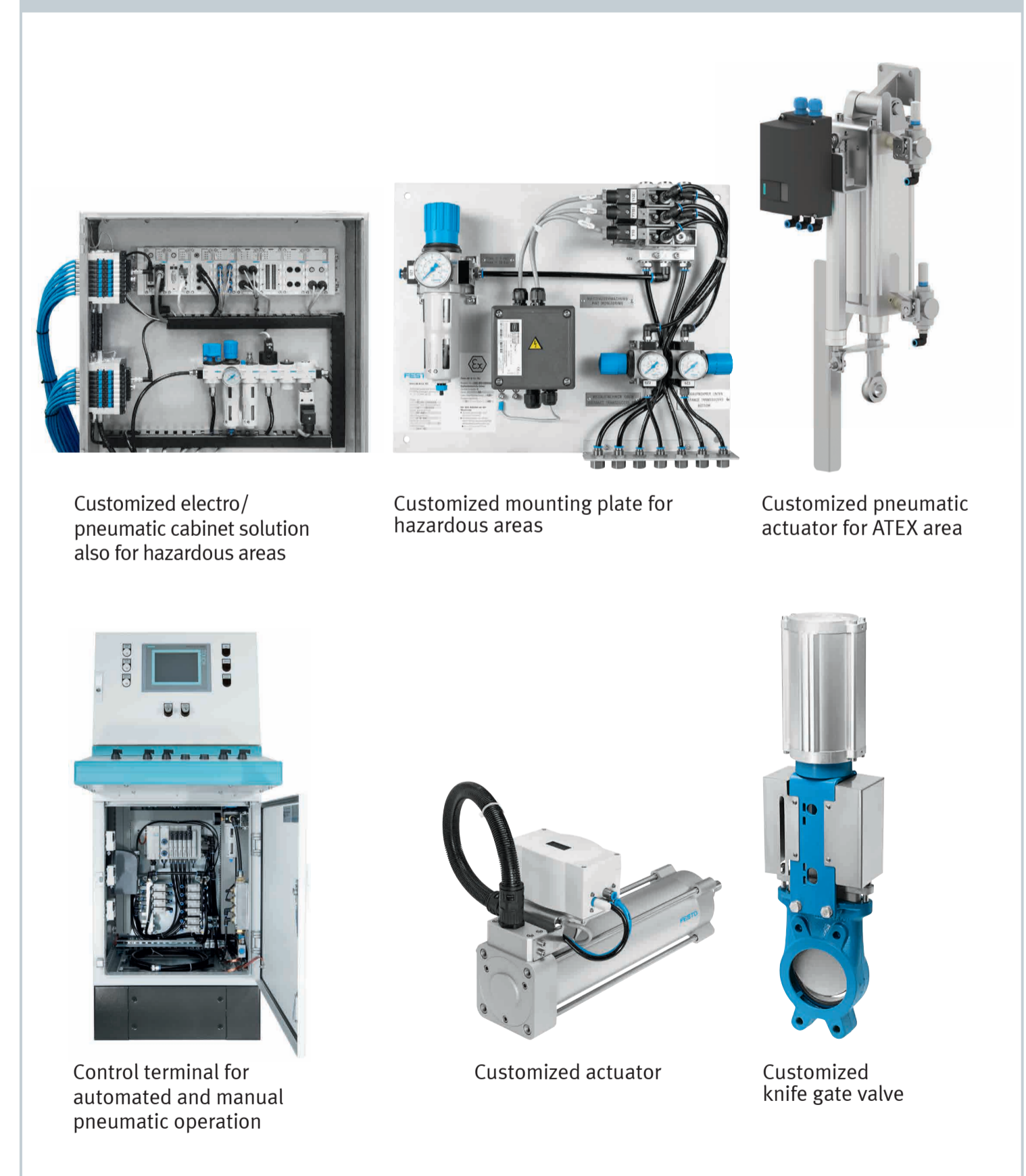
DIN 3358		ISO 15552		ISO 5211	
DLP	DFPI	DSBG	DFPI-...-NB3	CMSX	
					
On/off linear actuator	Controlled linear actuator	On/off linear actuator	Controlled linear actuator	Positioner	
<ul style="list-style-type: none"> Optional external displacement encoder NAMUR interface VDI/VDE 3845 High corrosion resistance T-slot for direct mounting of proximity sensors ATEX certification SIL 2 acc. to IEC 61508 	<ul style="list-style-type: none"> Integrated displacement encoder Integrated positioner (optional) High degree of IP protection up to IP69K High corrosion resistance T-slot for direct mounting of proximity sensors ATEX certification 	<ul style="list-style-type: none"> Optional external displacement encoder High corrosion resistance Suitable for swivel applications ATEX certification 	<ul style="list-style-type: none"> Integrated displacement encoder Integrated positioner (optional) High degree of IP protection up to IP69K High corrosion resistance Suitable for swivel applications ATEX certification 	<ul style="list-style-type: none"> Techno polymer housing Configurable control signal Additional feedback signal: 4 ... 20 mA 2x Digital feedback signals Degree of protection IP65 	
Diameter: 80 ... 320 mm Stroke length: 40 ... 2000 mm Mode of operation: Double-acting Cushioning: None Force (pressure 6 bar): 2,800 ... 48,000 N	Diameter: 100 ... 320 mm Stroke length: 40 ... 990 mm Mode of operation: Double-acting Cushioning: None Control signal (integrated Positioner): 4 ... 20 mA Force (pressure 6 bar): 4,417 ... 48,255 N	Diameter: 32 ... 320 mm Stroke length: 10 ... 2000 mm Mode of operation: Double-acting Cushioning: P, PPS, PPV Force (pressure 6 bar): 415 ... 48,255 N	Diameter: 100 ... 320 mm Stroke length: 40 ... 990 mm Mode of operation: Double-acting Cushioning: None Control signal (integrated Positioner): 4 ... 20 mA Force (pressure 6 bar): 4,417 ... 46,385 N	Operating Voltage: 24 VDC Control Signal: 0 ... 10 V/0 ... 20 mA/4 ... 20 mA Position accuracy: ±1% Mode of operation: Double-acting linear/quarter turn actuators Max. flow rate: 50/130 l/min	



Attachments and accessories



Customized solutions



Description/Type	DLP	DFPI	DSBG	DFPI-...-NB3	Description/Type	DLP	DFPI	DSBG	DFPI-...-NB3	Description/Type	DLP	DFPI	DSBG	DFPI-...-NB3	Description/Type	DLP	DFPI	DSBG	DFPI-...-NB3
1 Foot mounting HNC/CRHNC			X	X	7 Clevis foot LNSNG			X	X	14 Right-angle clevis foot LQG			X	X	23 Proximity sensor SMPO-1-H-B			X	X
Foot mounting HNG			X	X	8 Swivel flange SNCS			X	X	15 Rod eye SGS/CRSGS	X	X	X	X	24 Mounting kit SMBS			X	X
2 Flange mounting FNC/CRFNG			X	X	9 Clevis foot LBG			X	X	16 Rod clevis SGA			X	X	25 Proximity sensor SME/SMT-8M			X	X
Flange mounting FNG			X	X	10 Swivel flange SNCL			X	X	17 Coupling piece KSG			X	X	26 Mounting kit SMBZ-8-...			X	X
3 Trunnion flange ZNCF/CRZNG			X	X	Swivel flange SNGL			X	X	18 Rod clevis SG/CRSG	X	X	X	X	27 Sensor bracket DASP-MA-...			X	X
4 Trunnion support LNZG/CRLNZG			X	X	11 Swivel flange SNCB/SNCB-...-R3			X	X	19 Self-aligning rod coupler FK/CRFK	X	X	X	X	28 Pilot valve NAMUR VSNC	X			
5 Swivel flange SNC			X	X	Swivel flange SGNB			X	X	20 Connecting cable NHSB			X	X	29 Displacement encoder MLO-POT	X			X
Swivel flange SNG			X	X	12 Clevis foot LNG/CRLNG			X	X	21 Mounting bracket DADG-AK-F6-A2				X	More information about accessories can be found in the datasheets of the linear actuators (www.festo.com/supportportal)				
6 Clevis foot LSNG			X	X	13 Clevis foot LSN			X	X	22 Connecting cable NEBU		X		X					