



### CECC-LK as IO-Link Master Connected to SDAT

The application note contains a step by step explanation how to configure a SDAT sensor as IO-Link device connected to CECC-LK in Codesys V3.

CECC-LK;  
SDAT

Title ..... CECC-LK as IO-Link Master Connected to SDAT  
Version ..... 1.10  
Document no. .... 100127  
Original .....en  
Author .....Festo  
  
Last saved ..... 01.12.2016

## Copyright Notice

This documentation is the intellectual property of Festo AG & Co. KG, which also has the exclusive copyright. Any modification of the content, duplication or reprinting of this documentation as well as distribution to third parties can only be made with the express consent of Festo AG & Co. KG.

Festo AG & Co KG reserves the right to make modifications to this document in whole or in part. All brand and product names are trademarks or registered trademarks of their respective owners.

## Legal Notice

Hardware, software, operating systems and drivers may only be used for the applications described and only in conjunction with components recommended by Festo AG & Co. KG.

Festo AG & Co. KG does not accept any liability for damages arising from the use of any incorrect or incomplete information contained in this documentation or any information missing therefrom.

Defects resulting from the improper handling of devices and modules are excluded from the warranty.

The data and information specified in this document should not be used for the implementation of safety functions relating to the protection of personnel and machinery.

No liability is accepted for claims for damages arising from a failure or functional defect. In other respects, the regulations with regard to liability from the terms and conditions of delivery, payment and use of software of Festo AG & Co. KG, which can be found at [www.festo.com](http://www.festo.com) and can be supplied on request, shall apply.

All data contained in this document do not represent guaranteed specifications, particularly with regard to functionality, condition or quality, in the legal sense.

The information in this document serves only as basic information for the implementation of a specific, hypothetical application and is in no way intended as a substitute for the operating instructions of the respective manufacturers and the design and testing of the respective application by the user.

The operating instructions for Festo products can be found at [www.festo.com](http://www.festo.com).

Users of this document (application note) must verify that all functions described here also work correctly in the application. By reading this document and adhering to the specifications contained therein, users are also solely responsible for their own application.

# Table of contents

<b>1</b>	<b>Components/Software/ IP address used.....</b>	<b>4</b>
1.1	Recommended manuals / IODD .....	4
1.2	Topology .....	5
1.3	Wiring .....	5
<b>2</b>	<b>Configuring the IO-Link master .....</b>	<b>7</b>
2.1	IO-Link configuration.....	7
2.2	Configuration of Parameters and Testing .....	9
2.3	Programming in Codesys .....	11
2.3.1	Program to read parameter by coding.....	11
2.3.2	Read process data .....	13

## 1 Components/Software/ IP address used

Type/Name	Version Software/Firmware	IP address	Subnet mask
CECC-LK	V 1.4.0.1	192.168.0.20	255.255.0.0
Laptop	--	192.168.0.100	255.255.0.0
Codesys V3.5	SP7 Patch 4	--	--
SDAT-MHS-M100-1L-SA-E-0.3-M8	REV 4	--	--
NEBU-M8G4-K-2.5-LE4	--	--	--
ADN-16-100-A-P-A	--	--	--

Table 1.1: 1 Components/Software used

### 1.1 Recommended manuals / IODD

SDAT manual:

[https://www.festo.com/net/en-gb\\_gb/SupportPortal/Downloads/351653/443787/SDAT-MHS\\_2016-07d\\_8064926g1.pdf](https://www.festo.com/net/en-gb_gb/SupportPortal/Downloads/351653/443787/SDAT-MHS_2016-07d_8064926g1.pdf)

IODD:

[https://www.festo.com/net/en-gb\\_gb/SupportPortal/default.aspx?q=1531267+IODD&tab=4](https://www.festo.com/net/en-gb_gb/SupportPortal/default.aspx?q=1531267+IODD&tab=4)

CECC manual:

[https://www.festo.com/net/SupportPortal/Files/407042/CECC\\_2014-03a\\_8036062g1.pdf](https://www.festo.com/net/SupportPortal/Files/407042/CECC_2014-03a_8036062g1.pdf)

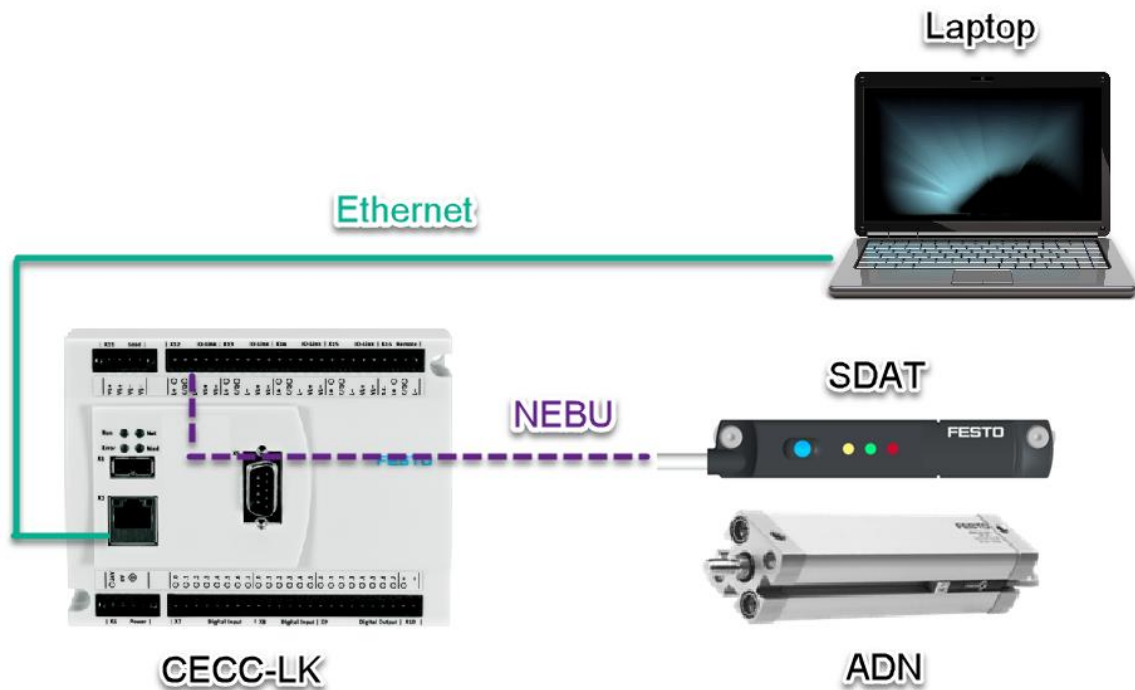
Target Support:

[https://www.festo.com/net/en-gb\\_gb/SupportPortal/Downloads/415525/443515/CECC\\_3.5.7.159\(ad778b5e1029\).package](https://www.festo.com/net/en-gb_gb/SupportPortal/Downloads/415525/443515/CECC_3.5.7.159(ad778b5e1029).package)

NEBU catalog:

[https://www.festo.com/net/en-gb\\_gb/SupportPortal/Downloads/272418/208021/nebu\\_en.pdf](https://www.festo.com/net/en-gb_gb/SupportPortal/Downloads/272418/208021/nebu_en.pdf)

## 1.2 Topology

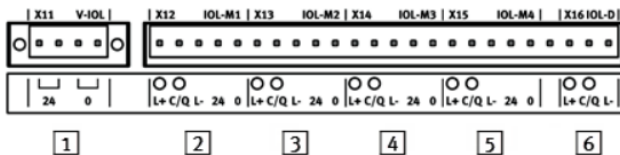


## 1.3 Wiring

IO-Link is a point to point communication (1 Master -> 1 Slave). In our example, we use port 1 of IO-Link master from CECC-LK. Festo has the NEBU cable series to connect the CECC-LK and SDAT. To get the correct wiring, please check the following pin assignments.

CECC-LK:

### 3.5.8 IO-Link on the CECC-LK



- 1 IO-Link load voltage supply X11
- 2...5 IO-Link master ports for connecting IO-Link devices X12 ... X15
- 6 IO-Link device port for connecting the CECC-LK as an IO-Link device X16

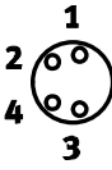
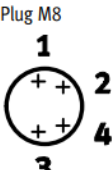
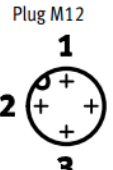
Figure: CECC-LK, top manifold rail with IO-Link interfaces

IO-Link	Pin	Signal	Comment
1	X11.1	24	Connection for load voltage supply for IO-Link master ports <sup>1)</sup> : UA+
	X11.2		
	X11.3	0	Connection for load voltage supply for IO-Link master ports <sup>1)</sup> : UA-(GND)
	X11.4		
2... 5	X12...15.1	L+	24 V
	X12...15.2	C/Q	IO-Link communication signal
	X12...15.3	L-	0 V
	X12...15.4	24	UA+
	X12...15.5	0	UA-
6	X16.1	L+	24 V
	X16.2	C/Q	IO-Link communication signal
	X16.3	L-	0 V

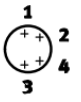
1) Port class B

Table: Pin allocation of the IO-Link interfaces on the CECC-LK

NEBU:

Electrical connection: socket, 4-pin, M8 – plug, 4-pin					
	1	BN	1		
	2	WH	2		
	3	BU	3		
	4	BK	4		

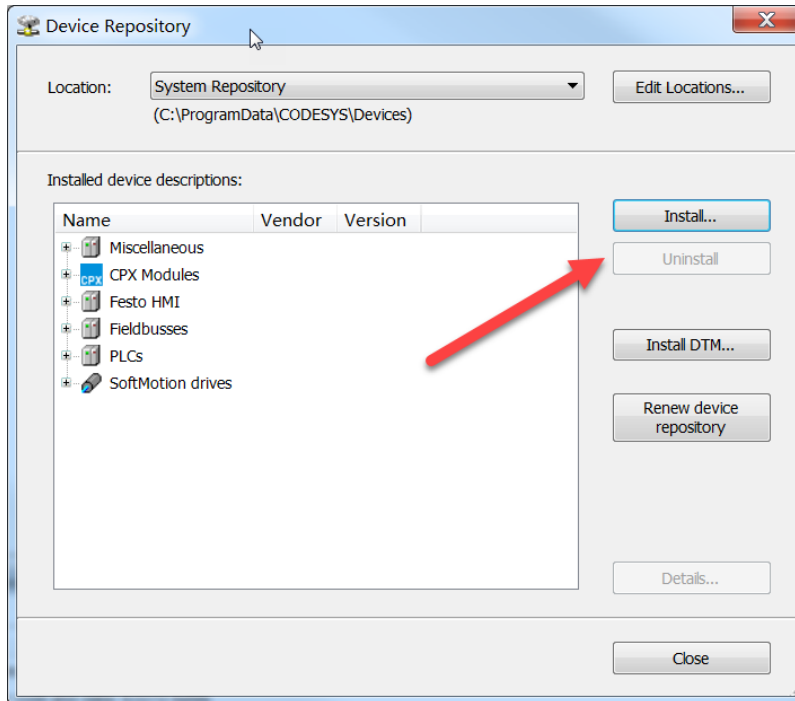
SDAT:

Pin allocation				
Plug M8x1, 4-pin		Wire colours		
	1	Operating voltage +24 V DC	1	BN = brown
	2	Analogue output 4 ... 20 mA	2	WH = white
	3	0 V	3	BU = blue
	4	IO-Link/switching output	4	BK = black

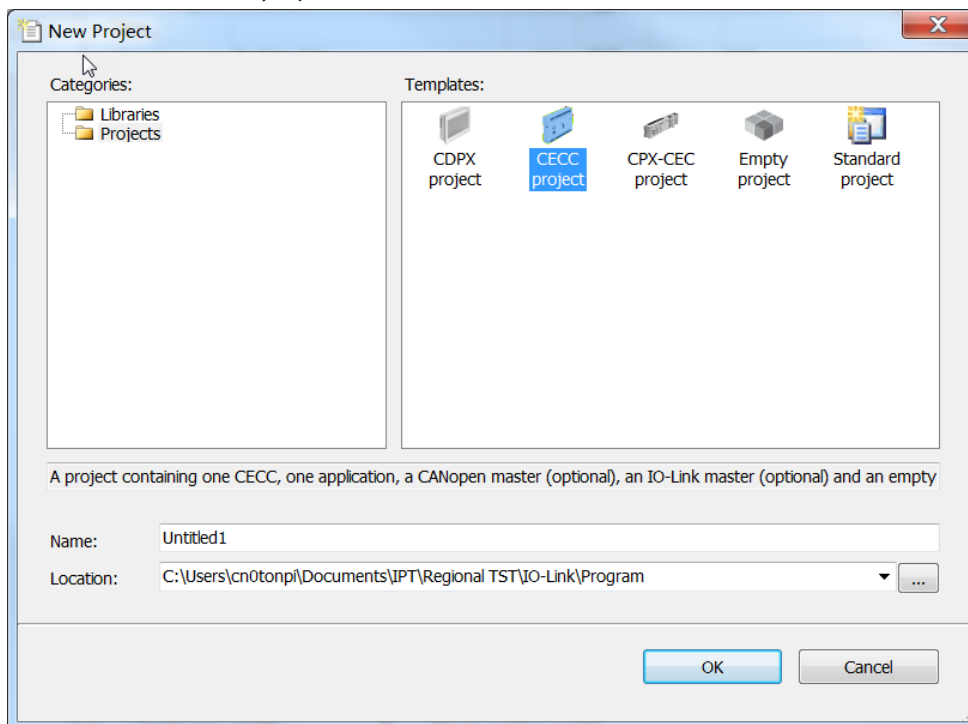
## 2 Configuring the IO-Link master

### 2.1 IO-Link configuration

Download the IODD file of SDAT and install it in the Codesys

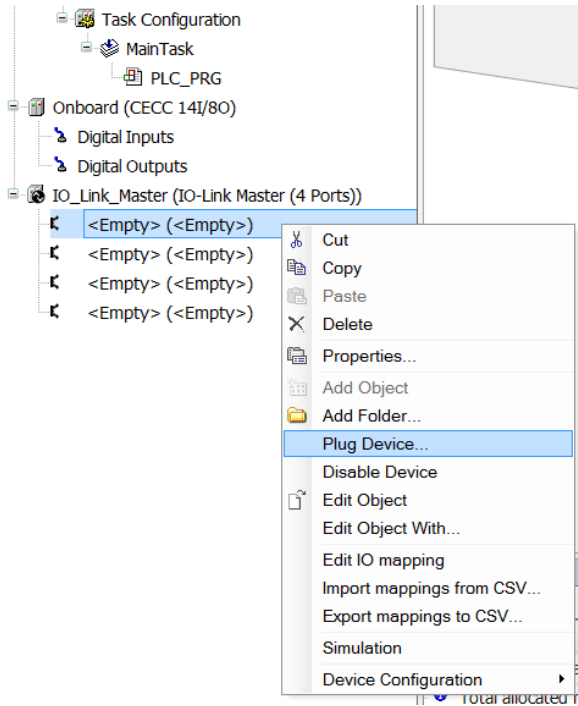


New an IO-Link master project, select CECC-LK and activate IO-Link Master

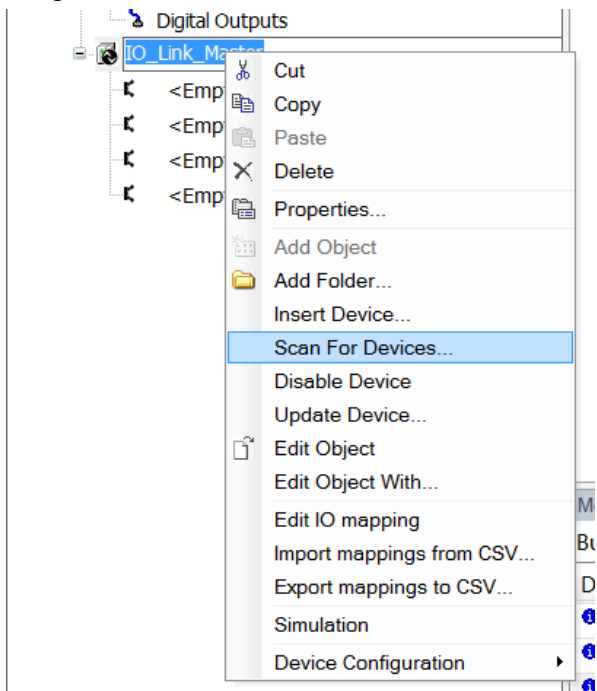


## Configuring the IO-Link master

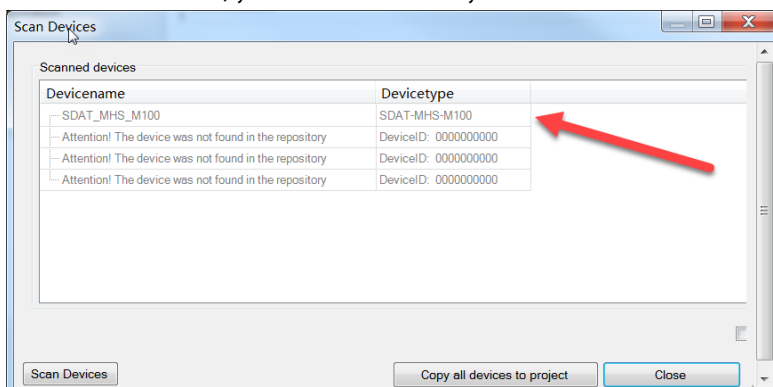
You can either right click the port 1 -> Plug Device to add sensor manually



Or right click the IO\_Link\_Master -> Scan For Devices



And after a moment, you will automatically find the device





## 2.2 Configuration of Parameters and Testing

Test the cylinder from zero point to max stroke, make sure that the SDAT sensor does not have a red LED indicating piston outside maximum range. If there is a red LED illuminated, then use screw to adjust the position of the sensor.

Status signals in normal operation

LED indicator			Description
Yellow	Green	Red	
			Green LED illuminated: Ready status (yellow: Any, red: Off). – Analogue output function or switching output operating mode. – Piston within the sensing range.
			Green LED flashing at 1 Hz: Ready status. – IO-Link operating mode.
			Yellow and green LEDs illuminated: Ready status. – Switching output switched. – Piston in the range of a programmed function.
			Green LED flashing 3 seconds at 3 Hz while the operating key is pressed: Operating key blocked.
			Red LED illuminated: Status display. – Piston outside the sensing range.

Tab. 4 LED displays in normal operation

The IO-Link function cannot be set via the operating keys on the device. All settings for set-up, commissioning and parameterisation are made in the higher-level controller of the IO-Link master.

Go to the SDAT IO-Link configurator

First use the Teach Scalepoint function to set the two ends of the piston

Name	Value	Unit	r/w	Description	Index
Device menu					
Device Access Locks			rw		12.0
Standard Command	Restore Factory Se...		wo	Reset all parameters to facto...	2.0
PDV inverting	PDV standard: Mini...		rw	Invert the direction of the po...	12304.0
Device analogue output menu					
Scalepoint start	117		rw	Scaling of the current output.	12288.1
Scalepoint end	10149		rw	Scaling of the current output.	12288.2
Standard Command	Teach scalepoint ...		wo	Teach the position of minim...	2.0
Standard Command	Teach scalepoint ...		wo	Teach the position of maxim...	2.0

There are three possible modes and 4 record entries we can use in SDAT, here in our example, we use both Cylinder Switch as Switchpoint Logic for BDC1 & BDC3.

Use also Teach Buttons for the setting of setpoints

Binary data channel BDC1 menu					
Setpoint 1	103		rw		60.1
Setpoint 2	293		rw		60.2
Switchpoint logic	NO, Normally open		rw		61.1
Switchpoint mode	Cylinder switch		rw		61.2
Hysteresis	24		rw		61.3
Standard Command	Teach SP1 BDC1		wo	Window comparator: First s...	2.0
Standard Command	Teach SP2 BDC1		wo	Window comparator: Second...	2.0

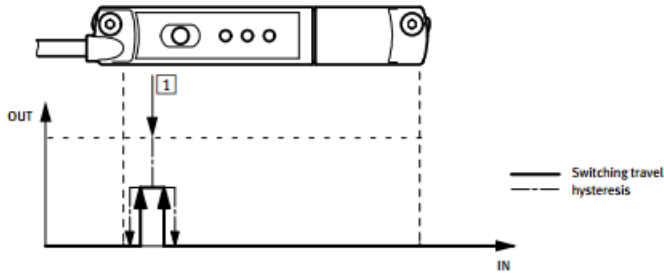
Here I use value 103 for Setpoint 1, which is smaller than scaled zero point valued 117 for the safety reason, because sometimes due to the big force, the piston can go further than your taught static zero point.

## Configuring the IO-Link master

Set also Switchpoint Logic for maximum stroke

Variable	Map...	Channel	Address	Type	Defa...	Current Value	Prepared Val...	Unit	Description
Binary data channel BDC3 menu									
Setpoint 1			9782	rw					16384.1
Setpoint 2			10178	rw					16384.2
Switchpoint logic			NO, Normally open	rw					16385.1
Switchpoint mode			Window comparator	rw					16385.2
Hysteresis			24	rw					16385.3
Standard Command			Teach SP1 BDC3	wo					Window comparator: First s... 2.0
Standard Command			Teach SP2 BDC3	wo					Window comparator: Second... 2.0

Cylinder Switch Mode means



1 Teach point

Fig. 5 Cylinder switch function

Now we can make the test.

At the zero position

Variable	Map...	Channel	Address	Type	Defa...	Current Value	Prepared Val...	Unit	Description
Channels									
Position data and switches									
		Position data	%IW1	UINT		24			0..2088 Position...
		Binary data channel BDC4	%IX4.0	BIT		FALSE			On Off
		Binary data channel BDC3	%IX4.1	BIT		FALSE			On Off
		Binary data channel BDC2	%IX4.2	BIT		FALSE			On Off
		Binary data channel BDC1	%IX4.3	BIT		TRUE			On Off

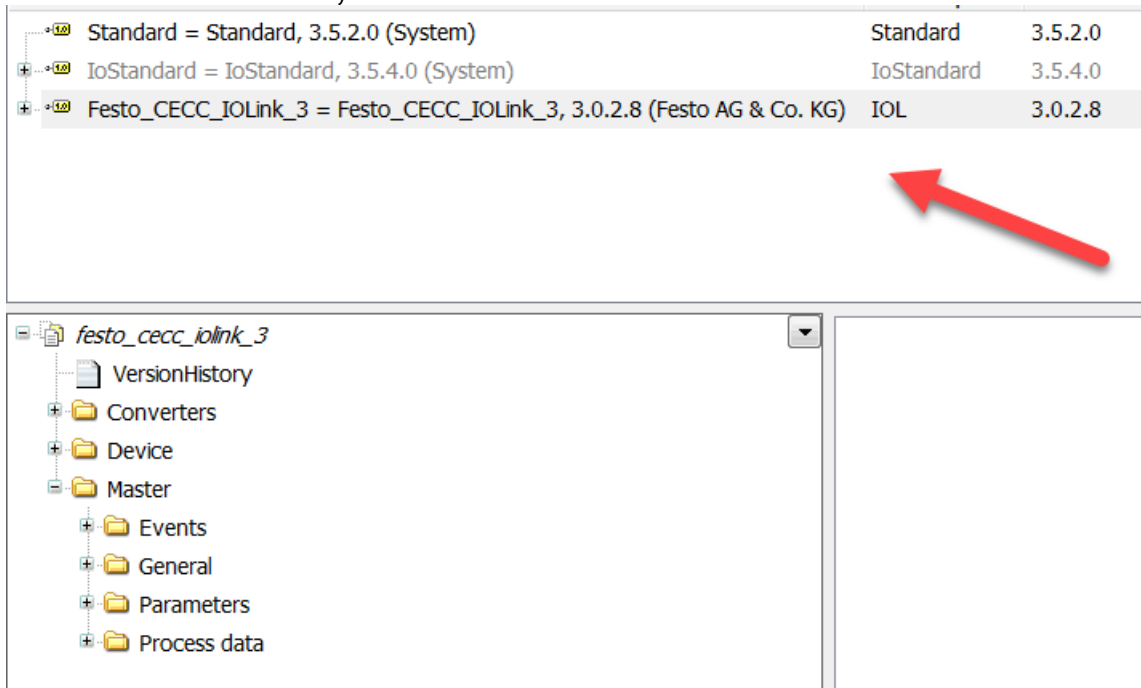
At the end position

Variable	Map...	Channel	Address	Type	Defa...	Current Value	Prepared Val...	Unit	Description
Channels									
Position data and switches									
		Position data	%IW1	UINT		2079			0..2088 Position...
		Binary data channel BDC4	%IX4.0	BIT		FALSE			On Off
		Binary data channel BDC3	%IX4.1	BIT		TRUE			On Off
		Binary data channel BDC2	%IX4.2	BIT		FALSE			On Off
		Binary data channel BDC1	%IX4.3	BIT		FALSE			On Off

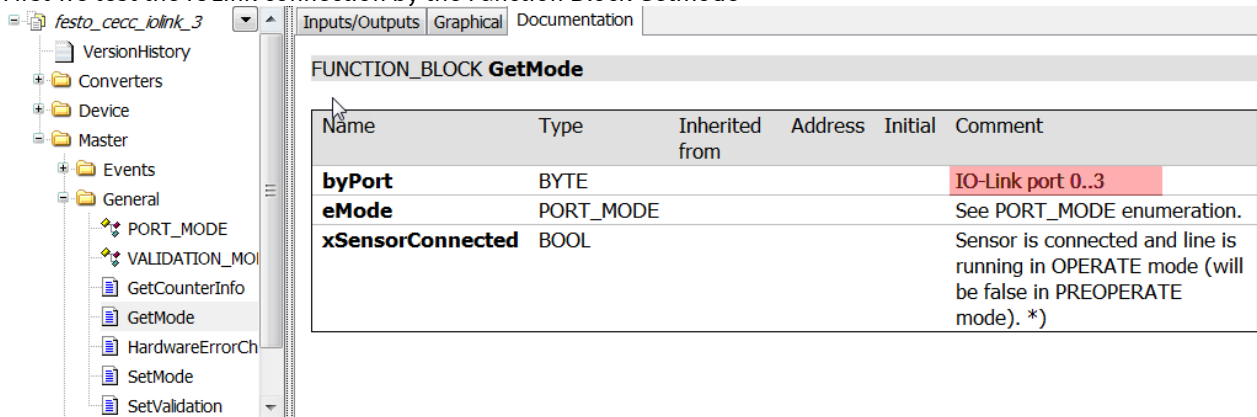
## 2.3 Programming in Codesys

### 2.3.1 Program to read parameter by coding

Import Festo\_CECC\_IOLink\_3 library to project, in the project we are using the Functions & Function Blocks under folder Master of this library



First we test the IOlink connection by the Function Block GetMode



Being noticed that we are using IOL port 1, but in this FB we should use port number "0"!

If the connection is OK, you get the return value "True".

```

1 GetModePort1 (byPort 0 := 0, xSensorConnected TRUE =>xPort1Connected TRUE) ;
2 GetModePort2 (byPort 1 := 1, xSensorConnected TRUE =>xPort2Connected TRUE) ;
3 GetModePort3 (byPort 2 := 2, xSensorConnected FALSE =>xPort3Connected FALSE) ;
4 GetModePort4 (byPort 3 := 3, xSensorConnected FALSE =>xPort4Connected FALSE) ;
5

```

Next we will use the FB ReadParameter to read the parameters from SDAT.

In this case, we read the Product Name, Switchpoint Logic of BDC1 and Switchpoint Mode of BDC1.

## Configuring the IO-Link master

Check the index of these parameters

IO-Link Parameter  
IO-Link I/O Mapping  
Information  
Status



User role:

Identification menu  Parameter menu  Diagnosis menu

Set to defaults

Read Objects

Name	Value	Unit	r/w	Description	Index
Vendor Name	Festo AG & Co. KG		ro		16.0
Vendor Text	http://www.festo.c...		ro		17.0
Product Name	SDAT-MHS-M100-1...		ro		18.0
Product ID	1531267		ro		19.0
Product Text	Position transmitter		ro		20.0
Serial Number	3S7PLFZ2VLW		ro		21.0
Hardware Version	R04		ro		22.0
Firmware Version	R03		ro		23.0
Application Specific Tag	***		rw		24.0
Direct Parameters 1			rw		0.0

IO-Link Parameter  
IO-Link I/O Mapping  
Information  
Status



User role:

Identification menu  Parameter menu  Diagnosis menu

Set to defaults

Read Objects

Name	Value	Unit	r/w	Description	Index
Device menu					
Device analogue outp...					
Binary data channel B...					
Setpoint 1	103		rw		60.1
Setpoint 2	293		rw		60.2
Switchpoint logic	NO, Normally open		rw		61.1
Switchpoint mode	Cylinder switch		rw		61.2
Hysteresis	24		rw		61.3
Standard Command	Teach SP1 BDC1		wo	Window comparator: First s...	2.0
Standard Command	Teach SP2 BDC1		wo	Window comparator: Second...	2.0
Binary data channel B...					
Binary data channel B...					
Binary data channel B...					
Teach-in menu					

Only one function block for read/write parameter for one port is allowed!

We program accordingly, and get the results

```

6 IF xPort1Connected TRUE THEN
7   CASE byStep[3] OF
8     0: //read product name
9       IF NOT ReadParameterPort1.xBusy FALSE THEN
10        ReadParameterPort1(xExecute FALSE := TRUE, byPort[0] := 0, wIndex[61] := 18, pbyData[16#40C2B21] := ADR(strProductPort1[SDAT-MHS-M...]);
11      ELSIF ReadParameterPort1.xBusy FALSE THEN
12        ReadParameterPort1(xExecute FALSE := FALSE);
13      END_IF
14      IF ReadParameterPort1.xDone TRUE THEN
15        byStep[3] := 1;
16      END_IF
17
18      1: //read Switchpoint Logic in BDC1
19        IF NOT ReadParameterPort1.xBusy FALSE THEN
20          ReadParameterPort1(xExecute FALSE := TRUE, byPort[0] := 0, wIndex[61] := 61, bySubindex[2] := 1, pbyData[16#40C2B21] := ADR(xSwitchPointLogic FALSE));
21        ELSIF ReadParameterPort1.xBusy FALSE THEN
22          ReadParameterPort1(xExecute FALSE := FALSE);
23        END_IF
24        IF ReadParameterPort1.xDone TRUE THEN
25          byStep[3] := 2;
26        END_IF
27
28        2: //read Switchpoint Mode in BDC1
29          IF NOT ReadParameterPort1.xBusy FALSE THEN
30            ReadParameterPort1(xExecute FALSE := TRUE, byPort[0] := 0, wIndex[61] := 61, bySubindex[2] := 2, pbyData[16#40C2B21] := ADR(bSwitchPointMode[1]));
31          ELSIF ReadParameterPort1.xBusy FALSE THEN
32            ReadParameterPort1(xExecute FALSE := FALSE);
33          END_IF
34          IF ReadParameterPort1.xDone TRUE THEN
35            byStep[3] := 3;
36          END_IF

```

We get the result:

strProductPort1 = 'SDAT-MHS-M100-1L-SA-E-0.3-M8'

xSwichPoint = False //which means Normally Open

bSwitchPointMode = 1 //which means Cylinder Switch

### 2.3.2 Read process data

You can read the process data directly under the IO-Link I/O Mapping of this sensor in IO-Link configurator

The screenshot displays the IO-Link configurator interface. On the left, the device tree shows the 'IO\_Link\_Master (IO-Link Master (4 Ports))' expanded to 'SDAT\_MHS\_M100 (SDAT-MHS-M100)'. A red arrow points to this device. On the right, the 'IO-Link I/O Mapping' table is visible, showing the following data:

Variable	Mapping	Channel	Address	Type	Default Value	Current Value	Prepared Val...	Unit	Description
Position d...				%IW1 UINT		441			0...2088 Pos...
Binary da...				%DX4.0 BIT		FALSE			On Off
Binary da...				%DX4.1 BIT		FALSE			On Off
Binary da...				%DX4.2 BIT		FALSE			On Off
Binary da...				%DX4.3 BIT		FALSE			On Off