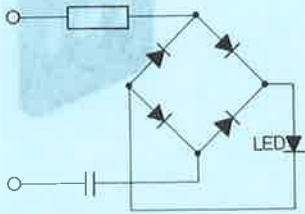


### Indicator insert

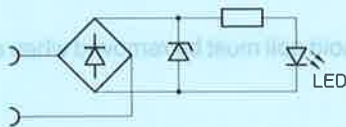
with yellow light-emitting diode (LED)  
for solenoid coils Type MSFG  
MSFW

#### Type MFL-...



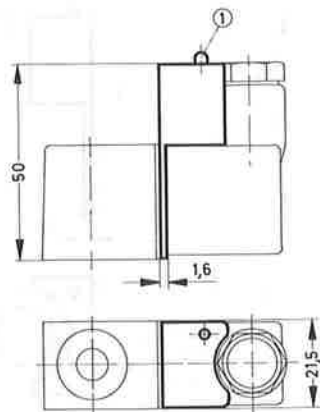
with built-in protective circuit

#### Type MFLZ-24



The insert are fitted between the solenoid coil and plug. After the power is turned on, the yellow LED lights up. The DC design cannot be connected up with incorrect polarity.

The protective circuit used in Type MFLZ-24 protects the trigger contacts against high voltage peaks which occur when inductive loads are switched off.



① LED



#### Note:

The seal fitted between the plug and solenoid coil must be removed when an indicator insert is fitted.

Order code	Part No./Type	10 004 MFL-24	10 005 MFL-220/50	12 610 MFLZ-24
Design		Insert with indicator		
Voltages		24VDC ± 10%/24 V AC ± 10%	220 V ± 10%/50 to 60 Hz	24 VDC ± 10%/24 V AC ± 10%
Power consumption		220 mW	50 Hz: 200 mW, 60 Hz: 270 mW	220 mW
Degree of protection to DIN 40050		IP 64 (without seal, IP 40)		
Connection		Plug connector to fit F coil		
Temperature range		- 5 to +40 °C		
Protective circuit (spark arresting)				Zener diode ZY 47 20 W
Weights		0.011 kg	0.011 kg	0.120 kg