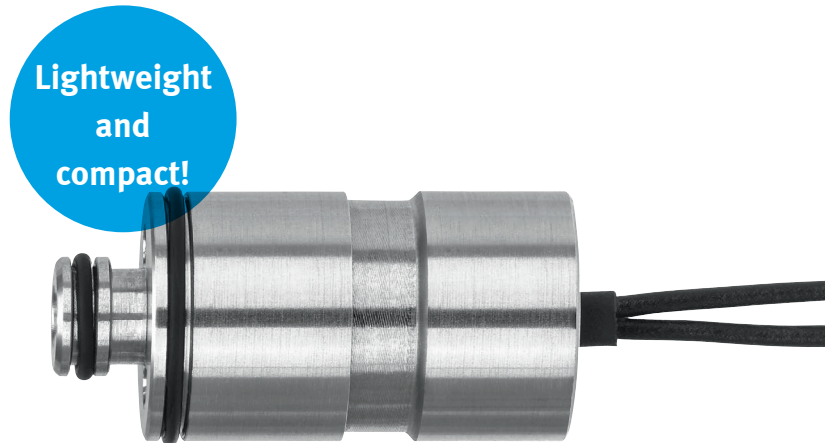


2/2-way proportional valve VPWS

FESTO



Lightweight
and
compact!

220 l/min at 2 bar

Highlights

- Extremely small, diameter only 15 mm, length only 30 mm
- Lightweight
- High flow rate of up to 220 l/min at 2 bar or 350 l/min at 4 bar
- Full proportional characteristics
- Attractively priced

This lightweight cartridge valve is compact at just 15 mm and has a large flow rate of up to 220 l/min at 2 bar or 350 l/min at 4 bar. The compact design and high flow rate of the proportional solenoid valve VPWS make it the optimal choice for use in medical technology. It is also suitable for other application areas and industry segments in which gas flows of 5 l/min to 500 l/min at up to 6 bar have to be regulated.

Safe and precise operation

The VPWS regulates gas flows, whether oxygen, carbon dioxide, air, nitrogen dioxide or inert gases, safely and precisely. And not only in medical technology, but also in applications in the electronics and semi-conductor industries, and the biotech/pharmaceutical industries.

Ideal for medical ventilators

The proportional valve VPWS shows its strengths in medical ventilators and anaesthesia systems, for example for mixing

respiratory gases with oxygen.

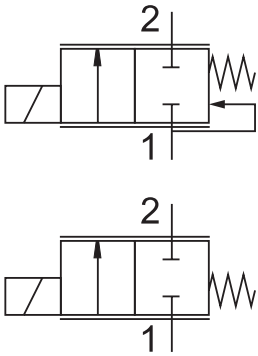
But it can also be used in laparoscopy and colonoscopy systems to meter carbon dioxide, air and other gases.

Flow rate always under control

In dental drills or other compressed-air-driven operating instruments, the VPWS regulates the flow of air reliably and precisely.

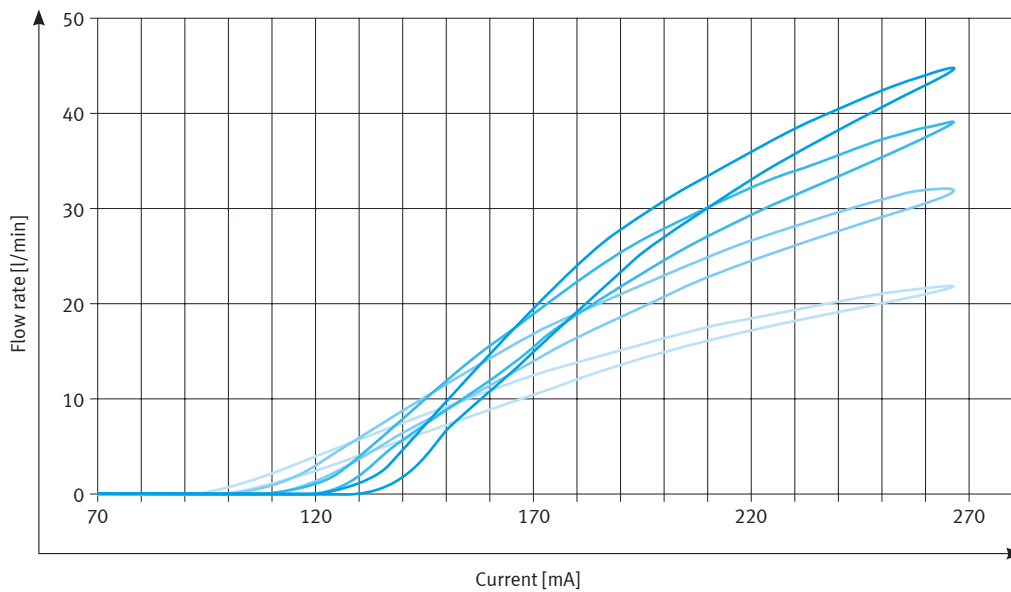
2/2-way proportional valve VPWS

The right proportional valve VPWS for every application



| | VPWS-6-B-6-PC15-3-V | VPWS-2.2-B-6-PC15-2-V | VPWS-1.5-B-6-PC15-8-V |
|--|--|----------------------------|----------------------------|
| Function | 2/2 N/C Pressure compensation | 2/2 N/C | 2/2 N/C |
| Nozzle [mm] | 6 | 2.2 | 1.5 |
| Max. inlet pressure [bar] | 6 | 2 | 8 |
| Max. flow rate | 220 l/min at 2 bar 350 l/min at 4 bar | 45 l/min at 2 bar | 90 l/min at 8 bar |
| Leakage [ml/min] | < 2 | < 1 | < 1 |
| Media | Air, oxygen, neutral gases | Air, oxygen, neutral gases | Air, oxygen, neutral gases |
| Material | Stainless steel, FKM | Stainless steel, FKM | Stainless steel, FKM |
| Current control Nominal power (max) | 0 ... 250 mA 2.5 W | 0 ... 250 mA 2.5 W | 0 ... 250 mA 2.5 W |

Example: the flow rate diagram for the 2 bar valve VPWS-2.2-B-6-PC15-2-V



- 2.0 bar
- 1.5 bar
- 1.0 bar
- 0.5 bar