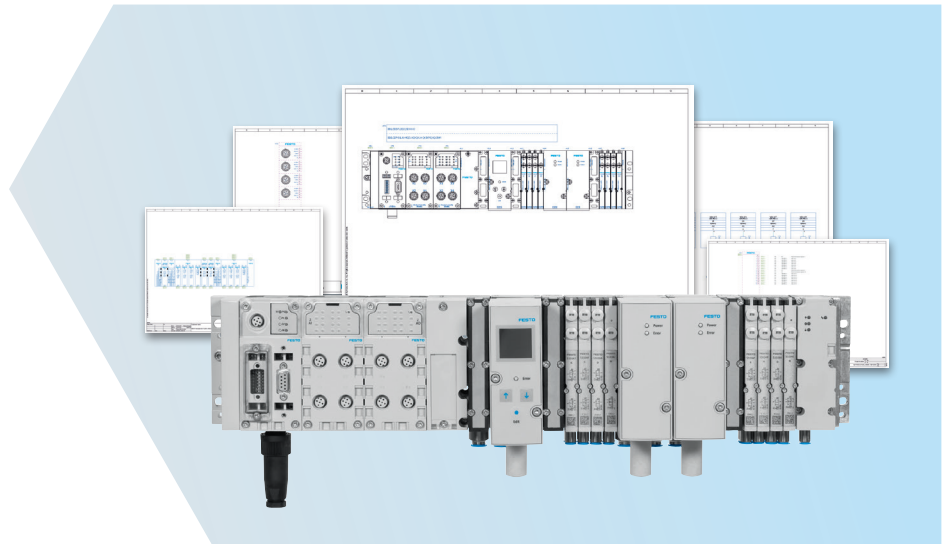


Schematic Solution for EPLAN projects

FESTO

Get digital. Now!

#higherproductivity



A real time saver!

Highlights

- **Intuitive, fast and reliable**
Error-free documentation at the push of a button instead of created manually
- **Complete**
Full mechatronic layout of configured products like CPX, VTSA, MPA
- **Reliable**
Automated generation to IEC 61355, IEC 81346, ISO 1219
- **Economical**
Gain time for value-adding activities

This circuit diagram service for complete EPLAN projects is unique to Festo. Schematic Solution for EPLAN projects documents your configured solutions in next to no time! Simply enter your order code and receive the complete plan in just a few minutes – error-free and trouble-free. No more tedious searching for, downloading and piecing together individual components.

The information is presented using a mechatronic approach, and includes the following:

Contents list

For keeping an overview of the project.

Bills of materials

Combined and itemised bills of materials, e.g. for the timely procurement of spare parts, help you to reduce downtimes.

2D structural overview

True-to-scale representation of your products makes it easier, for example, to size control cabinets.

Electrical layout

PLC overview, coils and electrical supply.

Fluid overview and details

Schematic representation of pneumatic functions and pressure zones. The compressed air supply, exhaust air and each valve slice are shown in detail so they can be quickly and easily integrated into your EPLAN documentation.

Prerequisites and output

You need EPLAN P8 Version 2.3. or higher for Schematic Solution. The documentation is output as an EPLAN file in ZW1 format and as a PDF.

ePLAN
fluid

ePLAN
electric18



Schematic Solution for EPLAN projects

EPLAN projects at the push of a button!

3D CAD data and product information for standard catalogue products have been available for 15 years. With Schematic Solution, Festo has now developed a service that creates a project using the order code for a custom configured solution. As a result, there is no more tedious downloading and piecing together of individual components.

At the moment, this can be done for the modular systems of the VTSA and MPA valve terminal

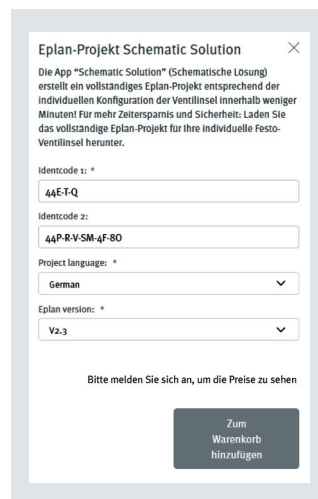
series as well as the CPX automation platform. However, the product range is constantly expanding.

It couldn't be easier

Visit our App World at www.festo.com/appworld. After logging in, you can enter the order code for your configuration in the screen provided on the Engineering Tools page. You can then have the EPLAN file generated in ZW1 format and as a PDF (this is a chargeable service). The ZW1 format can be easily integrated

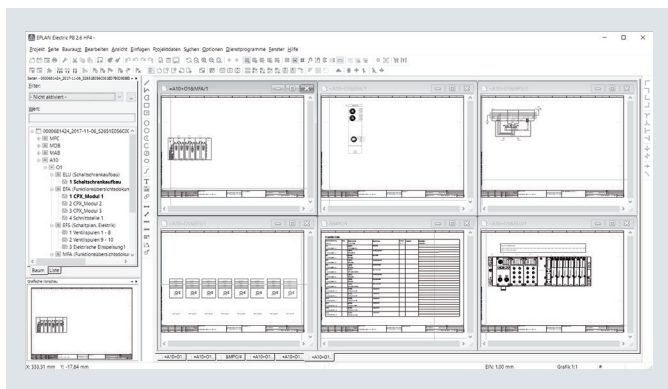
into your overall EPLAN documentation by dragging and dropping. Errors that arise during manual creation using single macros are eliminated.

We keep your data available for you for six months after delivery, ready to be retrieved at any time. Please note that you must be a registered user of the Online Shop to benefit from this service.



You enter the order code in this input screen

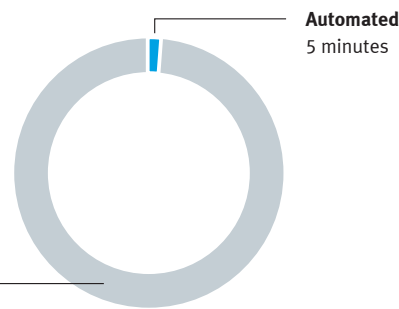
4 hours or 5 minutes? Your savings potential



This is what the documentation for your project looks like.

Documenting an EPLAN project manually can take up to 4 hours and, depending on the complexity, is very error-prone. In general, it involves a well-paid engineer spending time on a less than pro-

ductive activity. Schematic Solution allows you to use this time to add value – and to create project documentation without any errors.



Manual

- Break down the order code into its individual components
- Search for and download individual macros
- Create the circuit diagram manually

Results

- 2-4 hours per configuration
- High number of errors, depending on complexity
- Low added value

Automated

- Enter the order code
- Order the EPLAN project

Results

- Automated solution in just a few minutes
- Significantly fewer errors