

Electric stopper EFSD

FESTO

Stopping
made
easy!



All electrical!

Highlights

- Easy to install
- Can be connected directly
- Adjustable cushioning
- Integrated sensor for position feedback

Cover distances in a short time and then stop on the dot. Give feedback and continue on command. The electric stopper does it, from cushioning and stopping to outputting a sensor signal and receiving direct commands via the PLC.

Single interface

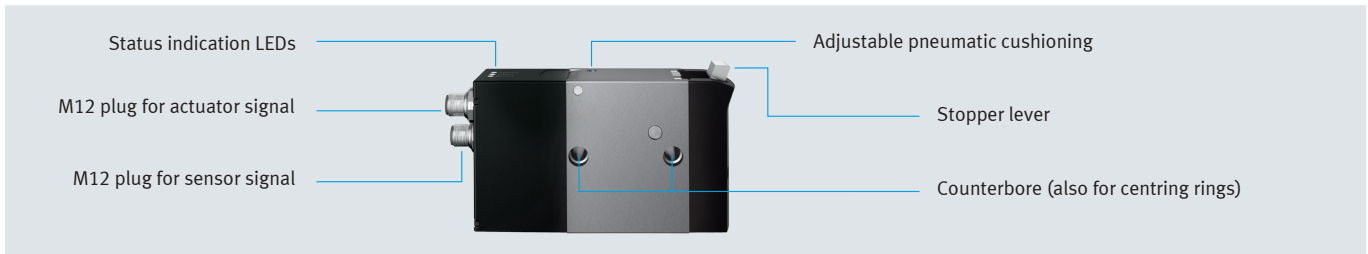
The electric stopper can be connected directly to the digital input/outputs of a PLC thanks to the integrated motor controller and the combined power supply interface.

Very easy assembly

This reduces assembly to just four screws – two mounting screws and one electrical plug each for input and output signals.

Electric stopper EFSD

Features at a glance

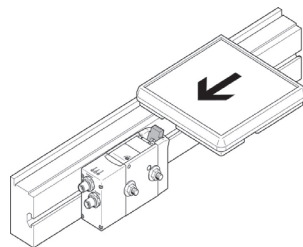


Speed	Size 20	Size 50	Size 100
6 m/min	0.25 ... 20 kg	1 ... 50 kg	3 ... 100 kg
9 m/min	0.25 ... 10 kg	1 ... 35 kg	3 ... 70 kg
12 m/min	0.25 ... 7 kg	1 ... 30 kg	3 ... 60 kg
18 m/min	0.25 ... 3.5 kg	1 ... 18 kg	3 ... 50 kg
24 m/min	0.25 ... 2.5 kg	1 ... 12 kg	3 ... 45 kg
30 m/min	0.25 ... 2 kg	1 ... 8 kg	3 ... 30 kg
36 m/min	0.25 ... 1 kg	1 ... 5 kg	3 ... 20 kg
With friction coefficient [μ]	0.1	0.1	0.07

The size of the electric stopper is determined by the speed and mass of the conveyed goods.

Application of the EFSD

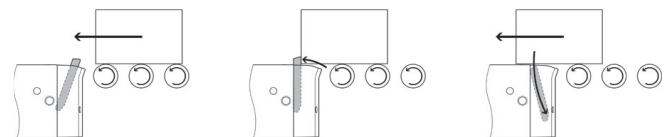
This stopper is specifically designed for use in transfer systems, where objects are transported from one processing station to the other. The EFSD can be mounted directly on the profile of the transfer system with just two screws.



Easy mounting of the EFSD on the transfer system

Operating mode of the EFSD

Functional sequence of the stopping and subsequent release process



1. Stopper lever in initial position

2. Stopper lever in hold position

3. Stopper lever in release position

Technical data	Size 20	Size 50	Size 100
Width [mm]	35	40	44
Height [mm]	60.5	78	78
Length [mm]	116.4	136.7	147.2
Max. lateral force [N]	20	50	100
Lever extending/retracting time [s]	0.1	0.15	0.3
Working stroke [mm]	7	8.6	8.6
Electrical inputs/outputs	1 control input and 2 switching outputs (PNP)		
Power supply	24 V \pm 15% (DC)		
Maximum current consumption	2 A		
Plugs	2 x M12 x 1.5 pin (for actuator and sensor signal)		
Ambient temperature [°C]	-10 ... +60		
Protection class	IP 40		
Cushioning	Pneumatic cushioning (atmospheric pressure)		

www.festo.com