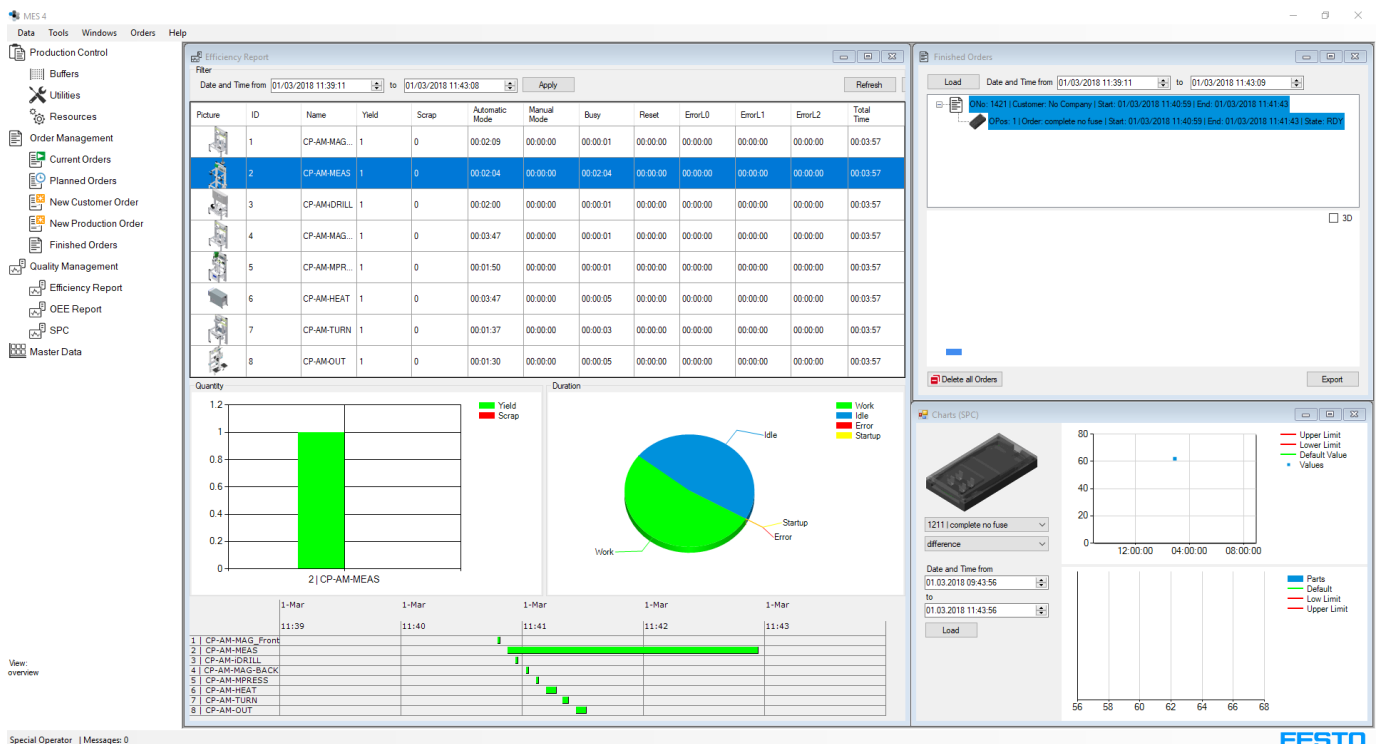


Festo Training and Consulting

From industry – for industry



DT231

CP Factory/CP Lab Training – Working with MES4

609513

www.festo-tac.com
tac.global@festo.com

In the not-so-distant future, customers will increasingly demand products customized for their specific needs, thus adding more complexity to the production process. This trend towards customization poses huge challenges for production planning and control (PPC) that can no longer be handled by traditional, manual production planning systems. Therefore, planning and control tools, such as the Manufacturing Execution System (MES), are even more vital. In addition to production planning and control, MES software also performs data collection and process analysis.

This training provides a general understanding of Manufacturing Execution Systems (MES) and purposes. In addition to learning the software functionality, participants train on our own professional learning systems – CP Factory or CP Lab – and discover the specific functionality and operation of Festo MES4 – our Access-based, MES for our smart factories. Both systems convey highly complex technologies and digital production methods, encapsulating comprehensive training on I4.0 topics.

DT231

CP Factory/CP Lab Training – Working with MES4

Training content

- What is a manufacturing execution system (MES)?
- Working with MES4 at the CP Factory/CP Lab
- Creation of master data (resources, routings, components, etc.)
- Generating and planning orders
- Quality management
- Interfaces to other systems
- Database structure

Training outcomes

After completing this training course, the participants:

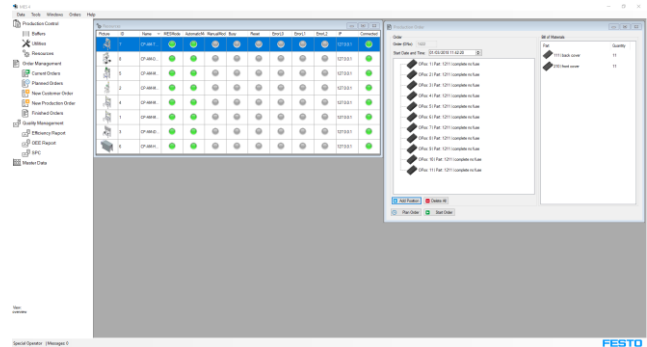
- are familiar with the purpose of an MES
- can use the MES4 for the operation of the CP Factory/CP Lab
- understand how the MES4 and the CP Factory/CP Lab implement production processes
- understand which data are collected by the MES4 and how these data are used

Target group

Vocational teachers and users of MES in Automation, IT and Production Planning departments

Duration

1 day



All Festo Didactic training courses offer the following additional benefits:

- Post-tests can additionally be used to monitor the training effectiveness
- Our trainings can be customized and carried out worldwide (on demand)
- Trainings take place with real industrial components, used in a safe environment
- Our trainers are certified according to our internal trainer qualification „Festo Certified Training Professional“ and have many years of industrial experience