

Electronic proximity switch SDBT-MSX

FESTO

Extremely easy
commissioning!



Auto teach-in

Highlights

- Automatic switching point detection
- Programmable switching output
- Programmable switching window range

The first proximity switch with automatic switching point setting makes commissioning easier than ever before. With its detection range of 20 mm, it is easy and reliable to install, especially in applications where mounting is difficult. SDBT-MSX is ideal for all standard applications, especially in factory automation and the electronics industry/small parts handling.

Precision adjustment? A thing of the past!

Simply install SDBT-MSX in the approximate end position, connect the cable to the controller and switch on the system. Done! Much easier, faster, and reliable than ever before. The automatic switching point detection learns the switching point during operation. And you don't even need a power supply during installation!

More options

Alternatively, you can use the capacitive control button.

The switching point is taught in manually, so you can define whether to use PNP, NPN or NO, NC, and the switching window can be set from 2 ... 15 mm. With these options, the variety of sensor types you need to stock is much reduced.

100 % compatible

SDBT-MSX fits in all drives with a T-slot. It best matches drives from Festo such as, among others, DSBC, DFM, DSNU, ADN, DGST. That's where its strengths are used to the full.

Electronic proximity switch SDBT-MSX

SDBT-MSX – The programmable proximity switch with auto teach-in.

Auto teach-in

The proximity switch detects the end position of the piston stroke and automatically learns the switching point during operation.

2 LEDs

Displaying:

- Teach-in mode
- Sensing range
- Switching output "ON"

Compact and sturdy housing

- Just 26 mm long
- IP65 / IP68



Capacitive control button

Programming of:

- Switching point
- PNP/NPN
- NO/NC
- Switching window range 2 ... 15 mm

High cable quality: energy chain and robot

- 3-wire
- M8 plug and open end

Sturdy and simple mounting

- Securely retained in the slot
- Captive retaining screw

The SDBT-MSX is best matched with Festo drives.



ISO cylinder DSBC



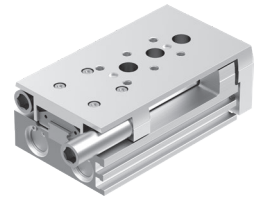
Guided drive DFM



Round cylinder DSNU



Compact cylinder ADN-S



Mini slide DGST

Easy to commission.

Easy to install without a power supply or precision adjustment.
Automatic set-up during operation.

1. 20 mm detection range marked on the SDBT-MSX.
2. Roughly mount the switch so that the end stop of the piston is within the detection range.
3. Connect SDBT-MSX with the input module (PLC).

Done!

SDBT-MSX automatically learns the switching point during system start-up, as part of auto teach-in.

Part number	Type	Description
8059120	SDBT-MSX-1L-PU-E-0.3-N-M8	PNP/NO preprogrammed, 30 cm cable, 3-pin M8 plug
8059121	SDBT-MSX-1L-PU-E-2.5-N-LE	PNP/NO preprogrammed, 2.5 m cable, 3-wire open end
8059122	SDBT-MSX-1L-PU-E-5-N-LE	PNP/NO preprogrammed, 5.0 m cable, 3-wire open end
8059123	SDBT-MSX-1L-NU-E-0.3-N-M8	NPN/NO preprogrammed, 30 cm cable, 3-pin M8 plug
8059124	SDBT-MSX-1L-NU-E-2.5-N-LE	NPN/NO preprogrammed, 2.5 m cable, 3-wire open end
8059125	SDBT-MSX-1L-NU-E-5-N-LE	NPN/NO preprogrammed, 5.0 m cable, 3-wire open end

www.festo.com