

# Service unit component series MS-Basic

FESTO



Upgrade –  
not a  
problem!

## Powerful, lightweight, inexpensive

### Highlights

- Fully compatible with the MS series
- Individually combinable
- Lightweight thanks to modern polymer materials
- Low cost
- Easy to use

The MS-Basic in a polymer housing offers you attractively priced basic components focused on the most important technical functions of compressed air preparation such as pressure regulation, filter regulation and manual or electric switch-on. And it is fully compatible with the MS series. This allows you to create the best possible mix of low-cost basic functions and any high-end functions you need.

### Powerful, yet lightweight

The regulators and filter regulators of the MS-Basic have a very high flow rate of up to 5800 l/min. The polymer materials deliver a weight reduction of up to 30% compared with the MS series in metal.

### Space-saving and reliable

The filter in the filter regulator is integrated in the bowl. This makes changing the filters easy and saves installation space. The transparent bowl shows at a glance whether you need to remove any dirt.

### Easier filter changes

You can connect the filter support to the filter regulator LFR using the optimised bayonet lock. The higher reset force ensures the filter bowl is securely fastened.

### Greater process reliability

The completely newly developed manual or fully automatic condensate drain provides even better protection against contamination. The integrated QS6 connection makes connecting and releasing the tubing even easier.

# Service unit component series MS-Basic

## Fast or soft switch-on

The new electric on/off valve is available as a soft start/quick exhaust valve (EDE) or an on/off valve (EE). With the soft start version (EDE), the first half of the air supply flow is controlled. This flow control rate is adjustable.



## Technical data

Type	MS4...B	MS6...B
Pneumatic connection	G1/4"	G1/2"
Pressure regulation range [bar]	0.3 ... 7	
Max. operating pressure [bar]	10	
Pressure gauge variants	MPa, bar/psi	
Standard nominal flow rate [l/min]	LR: 1500 LFR: 1300	LR: 5800 LFR: 4200
Weight [g]	LR: 205 LFR: 248	LR: 500 LFR: 602
Temperature range [°C]	-5 ... +50	
Grid dimension [mm]	40	62
Grade of filtration (LFR-B) [µm]	40; 5	

## Fully compatible: MS-Basic and MS series

The attractively priced MS-Basic is an extension of the existing MS series. As a result, both are fully compatible. Do you need extended functions such as a fine filter? Then combine the MS-Basic with the MS series.

Are you looking for a **standard application**? Then the MS-Basic is right for you, for example our preconfigured combination of manual, lockable on/off valve and filter regulator.



Standard application  
MS6-EMFR-...-B

Or are you looking for a **high-end solution**? Then you can combine the MS-Basic with the existing MS series, for example a combination of manual, lockable on/off valve, filter regulator and filter.

The filter regulator LFR-B is available either with an integrated pressure gauge or a 1/8" connection, for example for round pressure gauges.

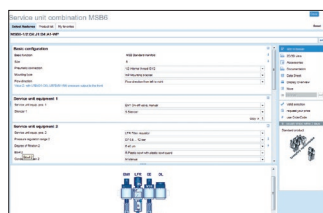


High-end solution  
MS6-EMFR-...-B + MS6-LF

## The reliable way to find the required combination

The product configurator provides you with a quick and easy way of configuring and entering the ordering data.

→ [www.festo.com/catalogue/ms-basic](http://www.festo.com/catalogue/ms-basic)



## Product Key for fast information

If required, for example for maintenance or repair, you can use the Product Key to quickly find information online, including the operating instructions. Simply scan the data matrix code on the product.