

Integration technology - system solutions with maximum performance and minimum dimensions. Ideal wherever a compact, clean design or quick installation and maintenance are required.

Maximum performance

Up to 60% less weight, high flexibility as well as optimised pneumatic and electrical interfaces. Excellent performance thanks to reliable standard components.

Maximum economic efficiency

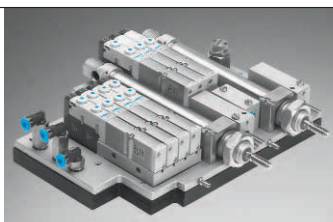
The lack of connecting parts saves assembly time, weight and fitting space. Also reduced are the costs of commissioning, maintenance, procurement and warehousing - you order, store and manage everything with just one part number.

Fast and reliable

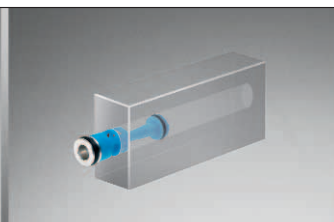
The closed system guarantees long service life and prevents unapproved access. The construction of reliable standard components guarantees fast and safe replacement during maintenance.

Customised: planning service

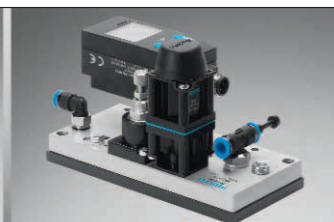
Experienced integration specialists will work out the optimal solution by viewing the problem on-site, by selecting and designing the components to delivering a complete system solutions, tested and ready for operation. And you will have the same contact person throughout all project phases.



Compact performance



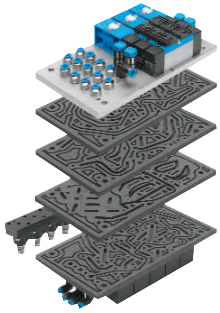
Small and inexpensive



Continuously economical

Festo integration technology

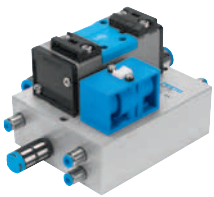
Different integration methods



Manifolds with integrated air ducts made of polyurethane in multi-layer technology

- High density of connections
- Variable positioning of mechanical, pneumatic and electric interfaces

- Mounting plate for aluminium pneumatic elements
- Closed system
- Also available with safety cover



Aluminium blocks with drilled channels

- Perfect for a small number of components and variable connection types

- Extremely economical, even at small quantities



Aluminium profiles

- Compressed air in a straight line in built-in channels
- Bundling of working air and exhaust air without tubing, even over long distances

- Modular construction that is easy to realise
- Mounting options for further functions on the profile
- Combination with polyurethane manifolds possible



Cartridge solutions

- Pneumatic functions like directional control valves, flow control valves, non-return valves, vacuum generators and pneumatic logic functions integrated into a customised housing
- High level of design freedom

- Highly compact design to save space
- Variable integration possibilities on and within the machine
- Sturdy design thanks to protective installation of parts and smooth surfaces



Special housing

- Compact, space-optimised format
- Protection against environmental influences and unauthorised access

- Alternative to conventional control cabinets
- For attractive design

Variety for individual solutions

Whether in process technology, the food and packaging industry or machine tool building, integration technology can respond to many different requirements. Festo specialists will work closely with you to find the solution most suited to your application.

A broad spectrum of (solution) possibilities is available that can be used to link pneumatic components and electrical peripherals while saving space.

So if a small installation space, the replacement of tubed parts, and ease of installation and maintenance are required, it is always worthwhile to consider integration technology.

These interesting solutions are available from a lot size of only 10–20 pieces.

Festo AG & Co. KG

Ruiter Strasse 82
73734 Esslingen
www.festo.com
Tel. +49 711 347-0
Fax +49 711 347-2144
service_international@festo.com