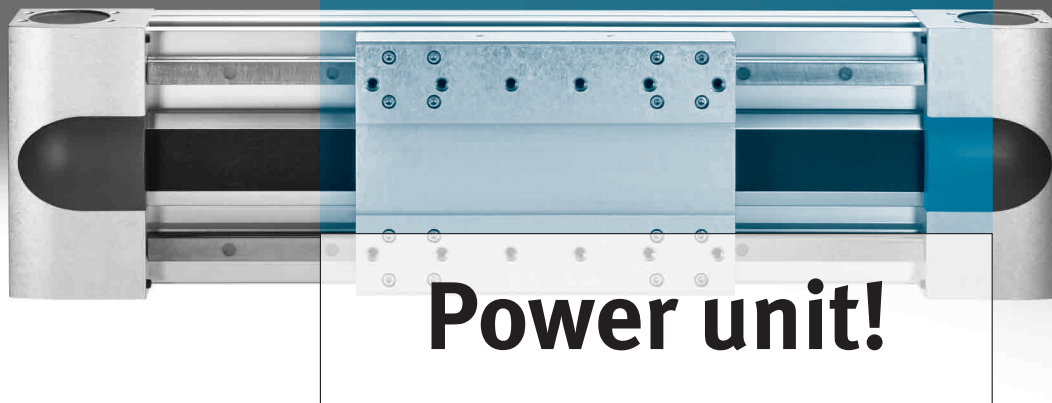


Toothed belt and spindle axes EGC/EGC-HD

FESTO



The comprehensive electric axis series EGC is available in numerous variants. And it offers many advantages, such as high dynamic response and speed, newly defined rigidity, and high load capacity. The heavy-duty axis EGC-HD is the latest addition to the series. All in all the new mechatronic modular axis range can be implemented as either an individual or a complete system solution.

Versatile

The entire EGC range is available as toothed belt and spindle axes. Numerous sizes and slide variants, optional central lubrication adapter as well as protected guides open up a broad range of applications.

Quicker planning

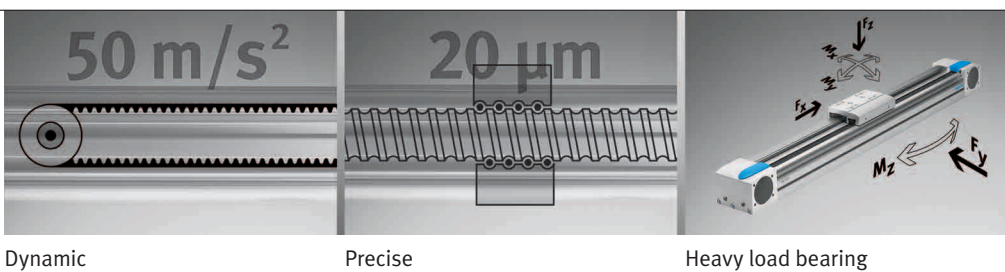
The EGC range in the Festo multi-axis and modular positioning system offers standardised interfaces for all drives and motor packages. Design using the PositioningDrives software additionally simplifies construction and eliminates costly oversizing.

Top performer

Specially developed profiles with an optimised cross section give the drives maximum rigidity and load capacity. Speed, acceleration and torque resistance set a new standard.

Heavy-duty variant HD

EGC-HD completes the EGC range with recirculating ball bearing guide. It effectively absorbs lateral forces and torques. With a toothed-belt or spindle drive with two parallel guides, it is perfect for cantilever systems.



Dynamic

Precise

Heavy load bearing

132.1.PSI →

Product Short Information

Toothed belt and spindle axes EGC/EGC-HD

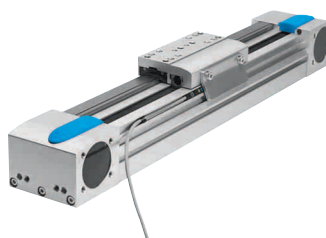


Flexible motor mounting on EGC-TB/EGC-HD-TB

- Motor can be attached on 4 sides, freely selectable
- Subsequent conversion possible at any time

The benefits to you:

Define a standard attachment variant with one part number and modify to alternative positions as and when needed



Reliable thanks to optional sensing

- Inductive proximity sensor SIES-8M
- Flush mounting of up to 2 sensors in the profile slot – no protruding edges outside of the drive cross section
- Output status display: 2 yellow LEDs for better visibility, regardless of approach direction
- Repetition accuracy $\leq \pm 0.05$ mm (radial)

Slide variants



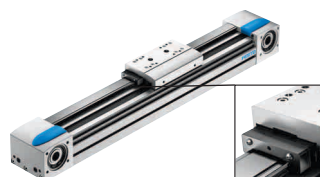
Extended slide

- Longer guide
- For a greater axial torque



Second slide

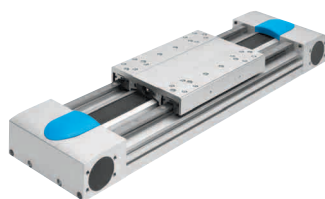
- 1 active and 1 passive (freely movable) slide
- For greater axial and lateral torques



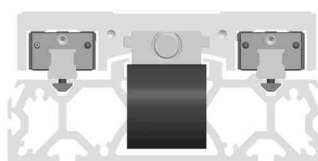
- Additional scrapers on both sides of the slide
- For protecting the guide against dust, dirt particles and fluids

Protected slide

Heavy-duty axis EGC-HD

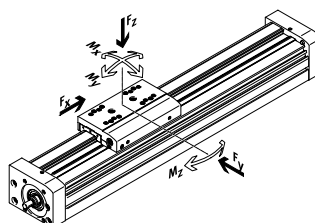


- High load-bearing capacity laterally to axis Mx (factor of 2 compared to standard axis)
- Flexible motor connection on all four sides on EGC-TB-HD
- Perfect for cantilever applications
- Often replaces a duo axis
- Economical compared to a duo axis installation



Technical data	EGC-HD-BS with spindle drive	EGC-HD-TB with toothed belt drive
Size (profile width in [mm])	125, 160, 220	125, 160, 220
Max. stroke [mm]	2,400	5,000
Max. speed [m/s]	1.5	5
Max. acceleration [m/s ²]	15	50
Repetition accuracy [mm]	± 0.02	± 0.08
Max. feed force [N]	1,300	1,500
Torques Mx [Nm]	900	900
Torques My/Mz [Nm]	1,450	1,450

Forces and torques using EGC-BS as an example



Festo AG & Co. KG

Ruiter Strasse 82
73734 Esslingen
www.festo.com
Tel. +49 711 347-0
Fax +49 711 347-2144
service_international@festo.com