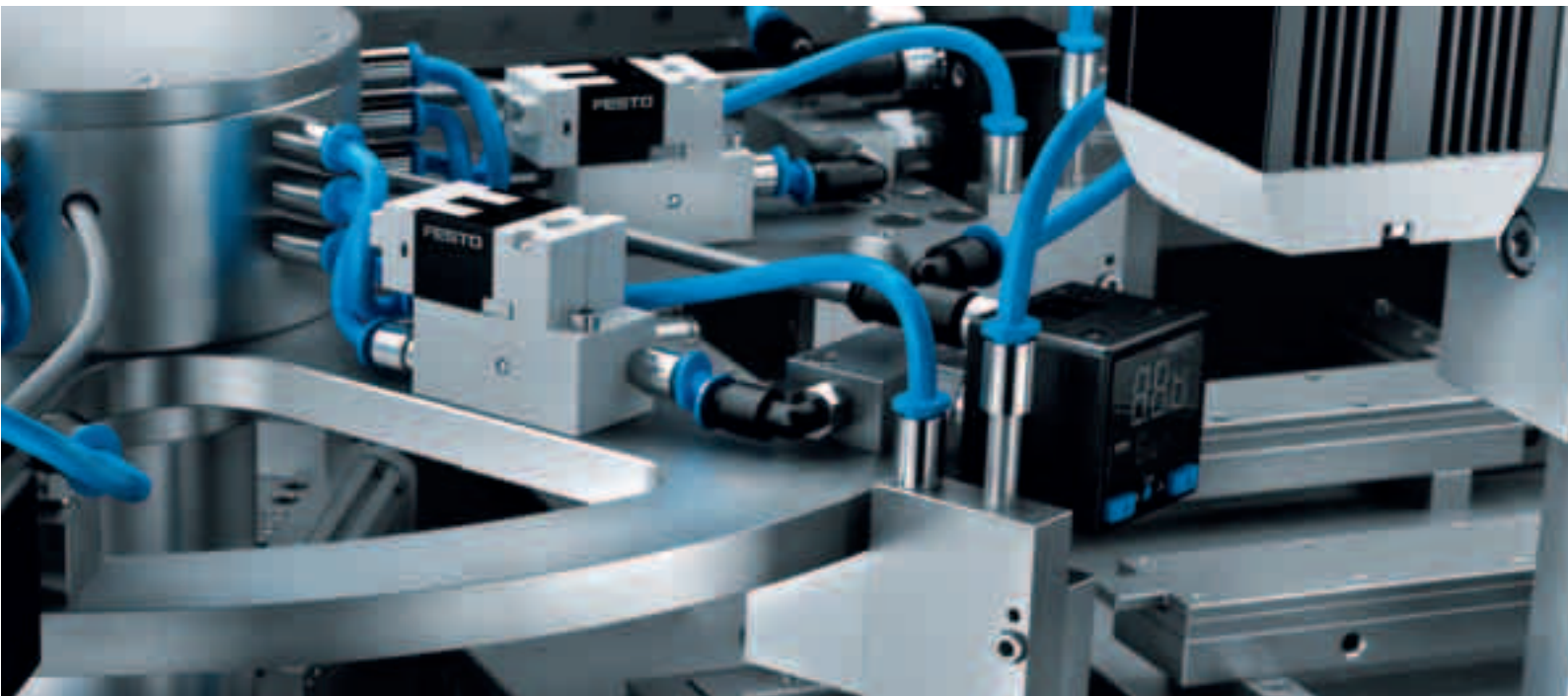


# Valves

**FESTO**





## Table of contents

	Page
VUVB/VTUB .....	4
MH/MHJ .....	6
CPE.....	8
VSVA (VTSA) .....	10
VOVG/VPPM .....	12
VUVG .....	14
Flow control valves .....	16
Customer-specific solutions.....	18
Overview of valves .....	20
Overview of valve terminals.....	22



## Valves from Festo – extremely universal and efficient

Quality only manifests itself when the right product is used in the right place. That's why valve quality at Festo is based on four principles to ensure that Festo products are the benchmark for quality.

First of all: a great variety of valves with an all-encompassing range of applications. All in all, the most complete, comprehensive and largest spectrum anywhere. Thus, there is always the right and most efficient valve for any application.

Secondly: maximised service life and cost-efficiency as a result of standardised, long-term function and endurance testing over the product's entire life cycle.

And thirdly: valve design. Flexible use – as individual valves, on manifolds or as valve terminals – as well as quick and easy installation and commissioning, are extremely important to us.

Last but not least, we have more than 1000 sales engineers to ensure that these benefits work for you. They would be more than happy to advise you!

The patented cartridge concept. Used in most of our standard valves, it opens up new dimensions.

The internal sealing structure, the contour of the seals and the special seal materials make valves with the cartridge concept:

- Extremely durable
- Highly reliable
- Very efficient
- Exceptionally versatile

On the whole, this greatly reduces your costs – for ordering as well as for logistics.

- Up to 100 % more flow
- Compact: more performance and less space
- Higher pressures of up to 10 bar
- Vacuum compatible
- Reversible – two pressures at a single valve at the same time
- No overlap – for reliable separation of the air ducts during dual pressure operation
- Minimal leakage





## New: VUVB/VTUB – for attractively priced flexibility

Our response to price-sensitive applications: valve range VB with variants VUVB and VTUB in sizes VB20 and, as a new addition, VB12. It offers outstanding value for money and an excellent size-to-flow rate ratio. These valves are characterised by extremely easy installation and reduced assembly work as well as flexible valve position attachment and integrated QS threaded connectors.

### Light, flexible and universal

From individual valves to valve terminals – individualised configuration for maximum flexibility during use is a distinguishing feature of the VUVB/VTUB, as is ease of operation. The ultralight housing made of reinforced polymer and the weight-optimised metal manifold strip are cut out for use on, for example, cantilevers and robot arms.

### New – valve range VUVB/VTUB-12: for surprisingly simple solutions

It includes all the advantages of the VB valve range, of course. And in addition to this, it can easily be converted from a 5/2 to a 3/2-way function and is thus perfect for the logistics manager within us all. This means that by stocking this basic valve, you'll be able to cover a multitude of

applications, from components right up to multi-pin valve terminals!

- VUVB/VTUB-20: 1 basic valve – 4 different flow rate ranges by changing the QS connections
- VUVB/VTUB-20: easy conversion from 4/2 to 3/2-way function
- VUVB/VTUB-12: easy conversion from 5/2 to 3/2 way function



VTUB-12



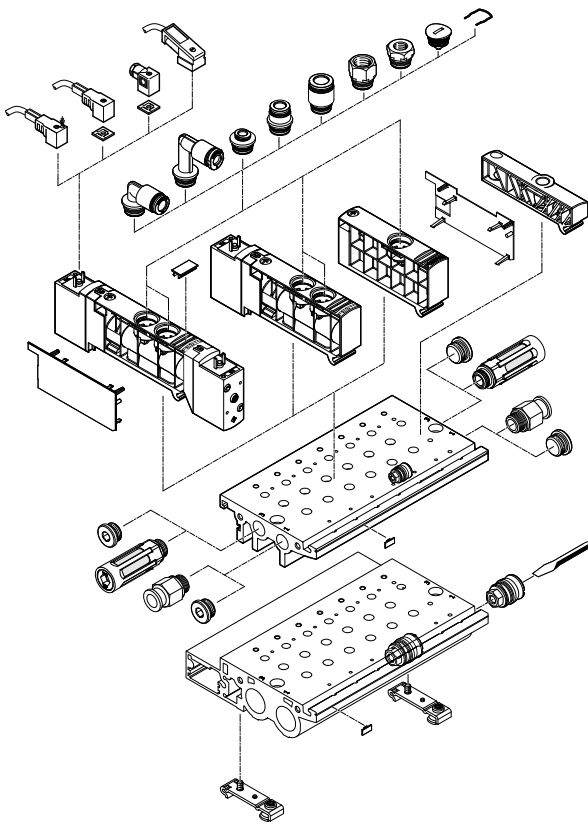
VTUB-20



VTUB-20



VUVB-20



Technical data	VUVB/VTUB-12	VUVB/VTUB-20
Valve functions	3/2-NC 3/2-NO 5/2 single solenoid 5/2 double solenoid	3/2-NC 3/2-NO 4/2 single solenoid 4/2 double solenoid
Constructional design	Poppet valve	Piston spool
Pneumatic connection	QS4/6	QS4/6/8/10
Flow rate	400 l/min	200 – 1,000 l/min
Operating pressure range	2.8 ... 8 bar	2 ... 8 bar (internal) -0.9 ... 8 bar (external)
Temperature range	-5 ... 60 °C	-5 ... 50 °C
Operating voltage	24 V DC	12 V DC 24 V AC 24 V DC 110 V AC 230 V AC
Power consumption	1 W	1.5 W
Number of valve positions – Multi-pin terminal	2 ... 35	2 ... 16 Valve manifold 4 ... 16 Multi-pin terminal
Width	12 mm	20 mm
Manual override	Non-detenting	Non-detenting/ detenting
Protection	IP65	IP65



## MH.. and MHJ.. – high speed guaranteed

### MH 2...4: extremely reliable high speed

The global frontrunner! Extremely short cycle times and comparatively low investment costs are combined with exceptionally high levels of process reliability, sturdiness and durability.

- Switching time:  $\leq 2$  ms for maximised dynamics and precision
- Repetition accuracy:  $\leq 0.2$  ms
- For 24 hour continuous operation and well over 500 million cycles

#### Process-optimised control

High output and excellent machine utilisation thanks to

extremely short cycle times and highly accurate switching, both of which are essential for precise control of sequenced process steps. And extremely good repetition accuracy ensures continuously uniform processes, improves process and parts quality and significantly reduces scrap and rework.

### Small and easy to expand

Maximised planning density – whether just expansion or an entirely new concept is involved. Indispensable for:

- Sorting by blowing out
- Flap control systems
- Bonding
- Dosing
- Packaging
- Vacuum applications

Technical data	MH..2	MH..3	MH..4
Medium	Filtered, lubricated or unlubricated compressed air or vacuum		
Medium/ambient temperature	-5 ... +60 °C (100 % duty cycle)		
Operating pressure range	-0.9 ... +8 bar		
Protection	IP65/IP40		
Standard nominal flow rate	100 l/min	200 l/min	400 l/min
Width	10 mm	14 mm	18 mm
Power consumption	5 W for approx. 3 ms and then 1.25 W	6.5 W for approx. 4.5 ms and then 1.6 W	8.5 W for approx. 6 ms and then 2.1 W
<b>Solenoid valve with electronics</b>			
Switching time on/off	1.7 ms/2 ms (+10/-30 %)	2.3 ms/2 ms (+10/-30 %) 2.8 ms/2 ms (+10/-40 %)	3.5 ms/3.5 ms (+10/-30 %)
Max. switching frequency (brief)*	330 Hz	280 Hz	210 Hz
<b>Solenoid valve without electronics</b>			
Switching time on/off (with spark arresting)	7 ms/3.5 ms	8 ms/4.5	9 ms/5 ms

\* Max. switching frequency during continuous operation on request



5/2-way individual valve



5/2-way sub-base valve on individual sub-base



Valve manifold with 5/2-way valves



### MHJ – the new dimension in sensor technology

Ultra fast, ultra long service life, ultra reproducible: type MHJ9 and MHJ10 blowing valves have been created for a new dimension in sorting technology thanks to extremely refined characteristics:

- Very short switching times: < 1 ms
- Flow rates of 50 to 150 litres per minute
- Outstanding repetition accuracy of less than 0.1 ms
- Unbeatably long service life of more than 5 billion switching cycles!

### Know-how generates innovation

These revolutionary characteristics are the result of continuous testing and ceaseless optimisation of an established product range.

### Custom-made for you

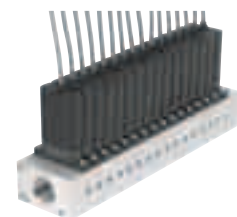
Choose from the following features to open up the range of possible applications and create

a perfect match for your system:

- Flow rate
- Valve layout
- Manifold design
- Pneumatic connections
- Electrical actuation
- Output/nozzle design

Or just tell us what your requirements are and our experts will recommend the best possible solution.

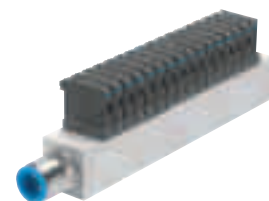
Technical data	MHJ-LF	MHJ-MF	MHJ-HF
Standard nominal flow rate	50 l/min	100 l/min	150 l/min
Medium	Filtered (40 µm), unlubricated compressed air		
Type	2/2-way poppet valve, directly actuated, pneumatic return		
Operating pressure range	0.5 ... 6 bar (higher on request)		
Medium/ambient temperature	-5 ... +60 °C (lower on request)		
Width	MHJ9: 9 mm/MHJ10: 10 mm		
Grid dimension	MHJ9: 9.5 mm/MHJ10: 10.5 mm		
Individual valve weight	MHJ9: 35g/MHJ10: 44g		
Sub-base valve weight	MHJ9: 24g/MHJ10: 34g		
Dimensions			
Individual valve (LxWxH)	MHJ9: 51 x 9 x 31 mm/MHJ10: 67.5 x 10 x 31 mm		
Sub-base valve	MHJ9: 32 x 9 x 31 mm/MHJ10: 53.5 x 10 x 46 mm		
Connection	MHJ9: KMH plug/MHJ10: 3-pin cable		
Operating voltage	24 V DC for MHJ10/2 ... 48 V DC for MHJ9 (with cable current regulator)		
Protection	IP65 for cable version/IP40 for plug version		
Manual override	None		
Repetition accuracy	0.1 ms		
Service life	5 billion (2 billion for HF)		
Power consumption (high current/holding current)	7 W/2 W	7 W/2 W	nn
Switching time at 4 bar and 24 V (on/off)	0.8 ms/0.5 ms	0.8 ms/0.4 ms	1.0 ms/0.8 ms
Pneumatic connection, individual valve	QS4	QS4	QS6



“Valve manifold with MHJ10 valves”



2/2-way valve MHJ10



“Valve manifold with MHJ9 valves”



2/2-way valve MHJ9



## CPE – the classic solution with high flow rates

With millions of units in use, this valve has been tried and tested for many years. With a higher flow rate relative to size than any other valve, the CPE is still the champion in its class.

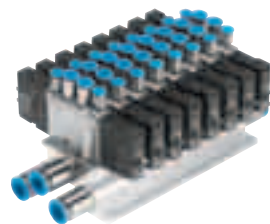
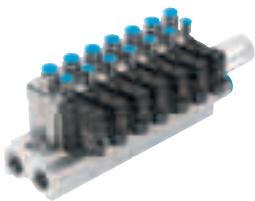
High system availability and a long service life of 100 million

switching cycles make the CPE a favourite component for systems and machines. Its compact performance, high flow rate and small size facilitate easy on-site installation, even under cramped conditions.

### **Energy saving!**

Whether used as an individual valve or on a sturdy, aluminium valve manifold, the CPE valve range is characterised by minimal temperature rise thanks to low electrical power consumption of 1 or 1.5 watts.

And not only that, but its soft sealing cartridge concept ensures minimal leakage, thus providing excellent pneumatic efficiency while its high flow rates and large pressure range of -0.9 to 10 bar ensure economic efficiency.







**New range of connections –  
new range of applications**

New: the 3-way, aluminium manifold strip for 2 to 10 valve positions. Traditional: 5-way manifold strips made of aluminium, or laid out as plastic linking modules.

New for CPE10 and CPE14: the internationally popular, 4-pin electrical M8 plug connector for 24 V DC for extremely easy and safe handling and assembly. Including:

- Manual override, non-detenting and non-detenting/detenting

- 10 mm wide pilot control without LED
- Suitable M8 cable with or without LED
- Suitable cable for chain link trunking is available
- IP40/IP65

New for CPE18: more voltage variants thanks to standardised Cnomo interface for 15 mm

Cnomo pilot controls and suitable cable with or without LED.



CPE10-M1BH



CPE10-M1CH



CPE18-P1  
with Cnomo pilot control



CPE24-M1H

Valve size	CPE 10	CPE 14	CPE 18	CPE 24
Width [mm]	10	14	18	24
Threaded connection	M5/M7	G1/8	G1/4	G3/8
Push-in connector	QS-4/6	QS-6/8	QS-8/10	QS-10/12
Max. flow rate*	350	800	1,500	3,200
Voltage	24 VDC	24 VDC	24 VDC 110 VAC 230 VAC	24 VDC 110 VAC 230 VAC
Electrical connection	Blade connector M8	Blade connector M8	Blade connector Cnomo pilot valve** M12 adapter (Cnomo pilot valve)	Blade connector

\* 5/2-way valve \*\* DIN EN 175301-803 type C



## VSVA – high level of integration

Standard yet flexible for maximised function and system integration. From valve mixing by directly connecting the valve to the PLC to complete installation solution on a valve manifold or valve terminal with extremely high flow rates – anything's possible with VSVA valves. And they are not expensive either. All versions are also available as pneumatically actuated valves

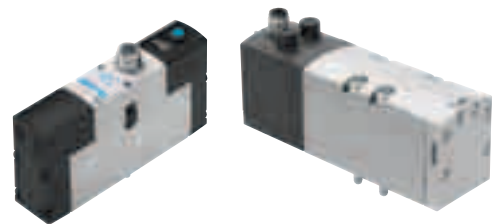
and can be expanded right up to the VTSA, the big sister of the VSVA.

**Integration has high priority**  
With components such as regulator, throttle plates and pressure shut-off plates, pneumatic functions can be easily integrated on the valve via vertical stacking. A pressure gauge for manual pressure

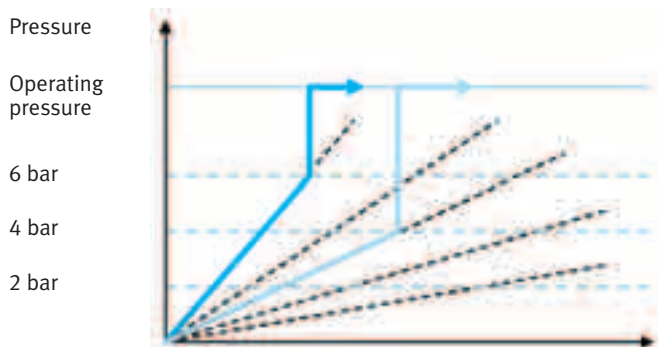
regulation is included. The M12 central plug is a new feature. Further variants: square plug connection for sizes 01 (26 mm) and 02 (18 mm), as well as time-saving M8 and M12 connections.

**Reverse operation: shorter cycles, longer service life**  
Reversible regulators offer genuine advantages: 50 %

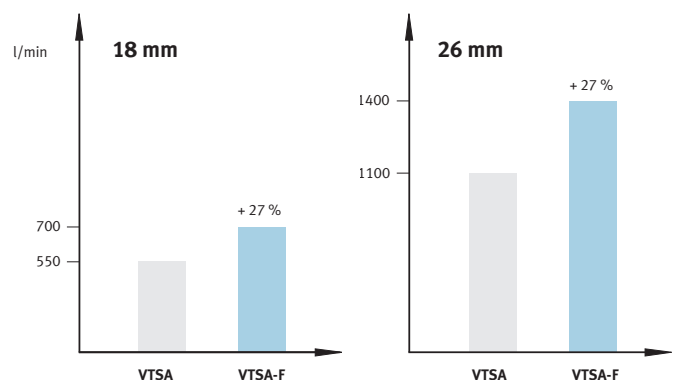
greater exhaust performance, shortened cycle times and two pressures at the same valve at the same time. Pressure can be adjusted and read independently of the valve's switching position and this ensures a longer service life. Generously dimensioned exhaust cross-sections for optimised, simultaneous switching.



VSVA with M12 central plug



The soft-start valve can be configured with one or several pressure zones on the standard valve terminal VTSA. Up to 5 soft-start valves can be integrated onto a single terminal.



Flow optimised VSVA valves provide for maximum flow rates – even in comparison with standard valves offered by the competition.



### Safety first – safety@Festo!

Standard pneumatics and safety pneumatics from a single source: at press controls, for example, the valves provide maximum safety thanks to switching position sensing (1 or 2-channel).

Integrated into the valve terminal VTSA and combined

with soft-start valve VAFB, position sensing of the piston spool offers the necessary safety. When the soft-start valve is unactuated, compressed air supply (channel 1 on the terminal) is vented via the exhaust outlet at the soft-start valve. This solution is used in, amongst other sectors, the automotive industry.

### VSVA sizes

- 18 mm (ISO02) ISO15407-1
- 26 mm (ISO01) ISO15407-1
- 42 mm (ISO1) ISO 5599-1
- 52 mm (ISO2) ISO 5599-1

### Technical data

Electrical				
Operating voltage, valves	24 V DC and 110 V AC			
Valve function	5/2, 5/3, 2x 3/2			
Number of valve solenoids	Max. 32			
Fieldbus connection				
Fieldbus nodes	Interbus, DeviceNet, Profibus-DP, CANopen, CC-Link via CPX terminal, AS-interface			
Industrial Ethernet	Modbus/TCP, Ethernet/IP, TCP/IP, Profinet via CPX terminal, Profinet to AIDA via CPX metal			
Electronics modules				
I/O modules	Analogue and digital I/O modules with variable connection technology (up to 512 I/O) Metal connection block, 4 x M12 or 8 x M12 via CPX metal			
Technology modules	FEC controller, CPI installation system			
Protection	IP65			
Power supply	24 VDC, max. 16 A			
Auxiliary power supplies	Several as options with max. 16 A			
Pneumatics				
	Valves to ISO 15407-1		Valves to ISO 5599-1	
Size	18 mm (ISO-02)	26 mm (ISO-01)	42 mm (ISO-1)	52 mm (ISO-2)
Flow rates up to	550 l/min	1,100 l/min	1,300 l/min	2,900 l/min
Working ports	G1/8 (NAW)	G1/4 (NAW)	G1/4 (NAV) G3/8 (VTSA)	G3/8 (NAV) G1/2 (VTSA)
Operating pressure with				
– Internal auxiliary pilot air	3 ... 10 bar			
– External auxiliary pilot air	-0.9 ... 10 bar (auxiliary pilot air: 3 to 10 bar)			



VSVA – pneumatically actuated valves



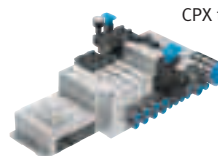
Individual sub-base, metal version



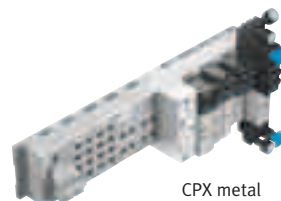
VTIA – pre-assembled valve manifold with pneumatic function integration



Multi-pin connection



CPX terminal



CPX metal to AIDA



## Valve range VUVG – the new standard

With the VUVG, the new benchmark for standard valves, it has never been easier to make your selection. And never easier to complete tasks efficiently and effectively.

### Outstanding size – more flow, less space

Up to 100 % more flow, greater energy density thanks to pressures of up to 10 bar and minimised space requirements. More applications can be

covered with a single valve type, thereby reducing logistics and ordering costs. VUVG paves the way to more compact layouts and new applications – even in imperial dimensions!

### Long service life with cartridge concept

Extremely durable, exceptionally sturdy – and compressed air quality with 40 µm filtering is entirely adequate! The VUVG is reversible, making two different

pressures possible. And vacuum applications are part of the package too.

### Easy installation, easy replacement

Quick to install, quick to replace, reliable and with a long service life: in a word, extremely easy installation is another advantage of the VUVG. Captive screws and higher torques make for more secure attachment and captive seals or

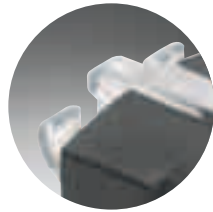
manual override are a standard feature.

### Maximum connection diversity: variable E-box

One basic valve and numerous electrical connections. Maximum diversity meets easy logistics and ordering. Just a single click and the E-box is installed. Or replaced. Additional advantage: choice of outlet direction to the side or the top.

#### Technical data

Valve functions	5/2, 5/3, 2 x 3/2-way
Constructional design	Reversible piston spool valves
Standard nominal flow rate	100, 220, 380, 750 l/min
Connection sizes	M3, M5, M7, G1/8
Working ports	QS 3, 4, 6, 8
Operating pressure	1.5 ... 8 bar (-0.9 ... 10 bar for type S)
Valve sizes	10 and 14 mm
Ambient temperature	-5 ... 60 °C
Power consumption	Reduced with holding current reduction of 0.35 W
Protection	IP40/IP65



Standard equipment: non-detenting/detenting manual override for easy commissioning.

E-box with patented contact system.

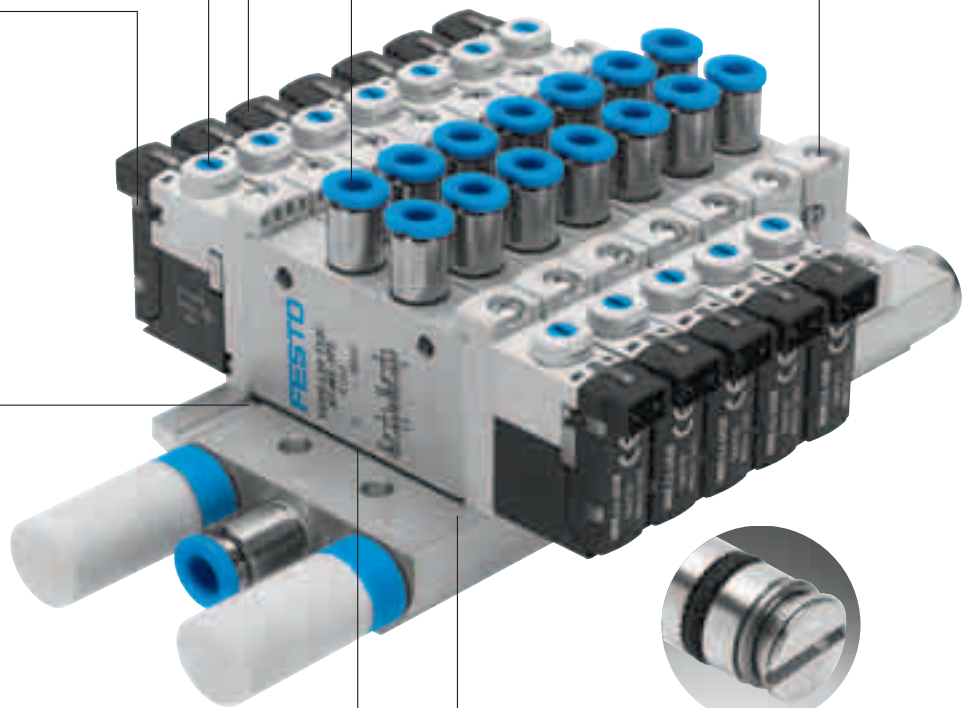
Integrated: LED with 360° view – convenient for quick status review as well as reduced downtime.

Imperial connections (inches) can be implemented seamlessly using hybrid fittings.

Captive screws. Strong and robust – with higher torque for secure mounting.



Direction indicator: locking for correct valve installation.



Captive: seal integrated into the valve.



Several pressure zones are possible: can be implemented easily and quickly with separators.

Take full advantage of installation space with diverse connection options and various functions.



Highly flexible: individual valves can be mounted in series without an additional manifold strip or bracket thanks to holes at the sides.



An individual valve is converted into a valve manifold without any additional elements.



## Valve range VOVG – individuality as a standard feature

Standards have never been more individual! Space-saving, high flow rates and universal in its use: the VG valve range is compact and high-performing in every installation situation. And thus it's ideal for all simple or less challenging handling applications, or for solutions with extremely high component density.

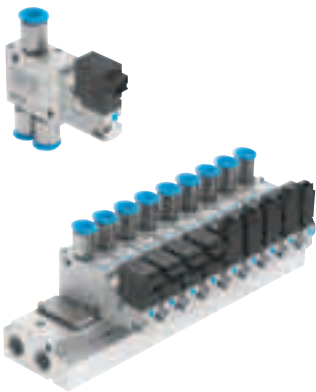
### Systematically and individually convincing

- From individual valves to valve manifolds with various functions
- More than 50 million switching cycles, extremely minimal leakage and highly reliable thanks to time-tested cartridge sealing system with piston spool

- Open for application-specific variants
- Compact for reduced machine dimensions
- Customer-specific direct integration as individual VOVG valve is possible, for example positioning of inputs/outputs, valve width in pilot valves
- Excellent value for the money

### Performance counts – and so does efficient use of resources

200 litres per minute with a width of 10 mm results in high cylinder speeds and on-site assembly improves response characteristics, reduces operating pressure and tubing requirements.



### Technical data

Valve function	3/2-way valve closed + open, 5/2-way valve
Type	Pilot actuated piston spool valve with cartridge seal
Nominal size	2 mm
Standard nominal flow rate	200 l/min
Operating pressure range	-0.9 ... 8 bar (suitable for vacuum with external auxiliary pilot air)
Switching time on/off	12/10 ms
Ambient temperature	-5 ... 50 °C
Width	10 or 12 mm (depending on type)
Grid	13 mm
Operating voltage	5 V DC, 12 V DC, 24 V DC (in each case ±10 %)
Power consumption	1 W
Duty cycle	100 % ED
Protection	IP40
Manual override	Non-detenting/detenting
Display components	LED for 24 V DC, on the valve or in the plug
Medium	Filtered (40 µm), lubricated or unlubricated compressed air, vacuum



## VPPM – proportional-pressure regulators redefined

### Fast, sturdy, universal control – it's all a matter of course with the VPPM

- Highly reliable and precise results
- No overshooting
- Outstanding value for money
- Can be used in all areas

It has the latest technology for the best results, regardless of whether accuracy or speed is required by simply pressing a button, or whether force and pressure in a process need to be accurately and flexibly measured on-site.

### Unique: multi-sensor control inside

Only from Festo: integrated multi-sensor control for improved control precision and sturdy regulating performance. As a 2-stage control circuit, cascade control subdivides the overall controlled system into two sub-systems. The trick: it's temperature compensated – pressure doesn't fade away with changes in temperature! Unrivalled: individual pressure regulation with a combination of modules for pressure acquisition and pressure control.

### Only from Festo: rugged regulation at the field-bus/Ethernet

Great distances are bridged using the VPPM on a valve terminal MPA. The controller's analogue setpoint can be reliably transmitted over hundreds of metres via the fieldbus with a digitised control signal – thanks to CPX in all fieldbus protocols. The comprehensive diagnostics are a further advantage.

### New for simple regulating tasks: VPPE with display

The compact proportional pressure regulator with good performance characteristics for simple regulating tasks. You only pay for what you actually need. And what you get is a reliable proportional valve, slimmed down to include the functions you require.



Technical data	
Valve functions	3/2-way proportional-pressure regulator
Flow rate per valve	At least 1.400 l/min. at 10 bar At least 900 l/min. at 6 bar At least 380 l/min. at 2 bar
Pressure range [bar]	0 ... 2, 0 ... 6, 0 ... 10
Switching outputs	NPN or PNP
Pneumatic connection	G1/8 or NPT
Design	Inline (1/8") or flange (NW6)
Electrical interface	M12 8-pin plug
Diagnostic function	Actual value Setpoint achieved Upper/lower limit value reached
3 presets	Fast, universal, precise
Display/control	VPPM-LED: regulator presets can be selected using push-buttons VPPM-LCD: numerous editing functions
Connector cable	Pre-assembled Y connector cable, M12 8-pin to 2 each M12 5-pin for direct connection to analogue I/O (CPX) with IP65/67 protection



## Flow control – invisible but indispensable

Three newcomers to the range of one-way flow control valves are causing a sensation. The small, lightweight VFOV is first choice for limited budgets, as well as limited installation space. Regardless of the selected flow rate, the height remains unchanged.

The new VFOC range with push-in sleeve is installed in just a matter of seconds. Push it into the cylinder with integrated push-in connector – align – done! A variety of valve functions – exhaust or supply air flow control – creates added value, in particular when installation space is not easily accessible.

By contrast, the GRLSA valve stands for continuously available reproducibility. The scale on the product clearly documents the selected flow rate value and thus significantly reduces costs for commissioning or service.

### Other valves

Type Function	Pneumatic connection	Actuation Flow Pressure	Description
VFOV One-way flow control valve	G1/8	Manual 288 0.5 ... 10	<ul style="list-style-type: none"> <li>• Rotatable 360° after installation</li> <li>• Constant height thanks to innovative design concept</li> <li>• Flow rate regulation</li> </ul>
VFOC One-way flow control valve	QS4, 6	Manual 0 ... 400 0.5 ... 10	<ul style="list-style-type: none"> <li>• Rotatable 360° after installation</li> <li>• Plug-in</li> <li>• Installation without tools</li> </ul>
GRLSA One-way flow control valve	G1/8, G1/4	Manual 300 ... 650 0.5 ... 10	<ul style="list-style-type: none"> <li>• Rotatable 360° after installation</li> <li>• With scale</li> <li>• Reproducible settings</li> </ul>
Other valves: Non-return valves H, HA, HB (non-return) Non-return valve HGL (non-return, piloted) On-off valve HE (2/2 double solenoid, 3/2 double solenoid) Hand slide valve W (3/2 double solenoid) Ball valves QH, QHS (2/2 double solenoid)			



VFOV



VFOC



GRLSA





## Mechanically and manually actuated valves

They offer the greatest possible functionality while being simple to operate. From manual workstations to large systems, mechanically and manually actuated valves from Festo are the right choice for actuating pneumatic systems.

### Convincing and high-performing

A large product range with different actuation and installation variants: front panel valves, direct actuation, plunger, roller, idle return roller lever, push-button, finger lever, hand

lever, foot or whisker actuation – detenting or non-detenting. Their common features are:

- Universal and robust
- High flow rates
- Metal or plastic design – also suitable for harsh environments



VHER

### Hand lever valves VHER

Lockable for safe service and maintenance work, position detection via sensors, outlet directions underneath or to the side, and a practical labelling system directly at the hand lever.

### Valves with barbed fittings

Mechanically or manually actuated valves made of plastic for actuating pneumatic power valves with comprehensive actuation options.

### Front panel valves and actuator attachments

For manual control of pneumatic power valves, made of plastic or metal. A mushroom push-button with detent, which can be locked for additional safety, is also available

### Valves with threaded connection

These metal valves can be directly or indirectly actuated, and can be used universally thanks to a broad range of actuation options.

### Technical data, VHER

Type	Ergonomic plastic lever, outlet direction underneath or to the side				Ergonomic metal lever, outlet direction underneath or to the side		
	M5	G1/8	G1/4	G1/2	G1/8 G1/8-NPT	G1/4 G1/4-NPT	G1/2 G1/2-NPT
Nominal size [mm]	4	6	8	12	6	8	12
Standard nominal flow rate [l/min.] Outlet direction to the side	170	600	1.150	3.500	600	1.150	3.500
Standard nominal flow rate [l/min.] Outlet direction underneath	260	800	1.500	4.300	800	1.500	4.300
Housing material	Plastic		Die-cast aluminium		Die-cast aluminium		
Design	Flat slide valve						
Operating pressure range [bar]	-0.95 ... +10						
Temperature range [°C]	-20 ... +80						
Functions	<ul style="list-style-type: none"> <li>• 4/3-way valve               <ul style="list-style-type: none"> <li>Mid-position closed</li> <li>Mid-position exhausted</li> </ul> </li> <li>• Lockable hand lever</li> <li>• Position detection by sensor possible</li> </ul>						



## A perfect match: your requirements and our solutions

Solving your individual tasks quickly and competently is a challenge that our experts worldwide would be glad to take on.

Customer-specific solutions with series features considerably reduce your time-to-market, regardless of whether you're an OEM or an end user. You can count on reduced lead-time for

project engineering, design, assembly, function tests documentation and delivery.

Of course the solution will be state-of-the-art and have defined interfaces for effortless installation. And it's been subjected to functional testing so that you can get things going without delay.





### Your task – our challenge

As an internationally unique, single-source supplier, Festo offers solutions that are based on the task at hand. Whether standard components, systems, application-specific products or customised services are the best way forward depends entirely on the task.

### Individualised services

Service from A to Z: our numerous services can help you find the right answer for your tasks, throughout the entire value creation chain.

### Individualised assemblies and systems

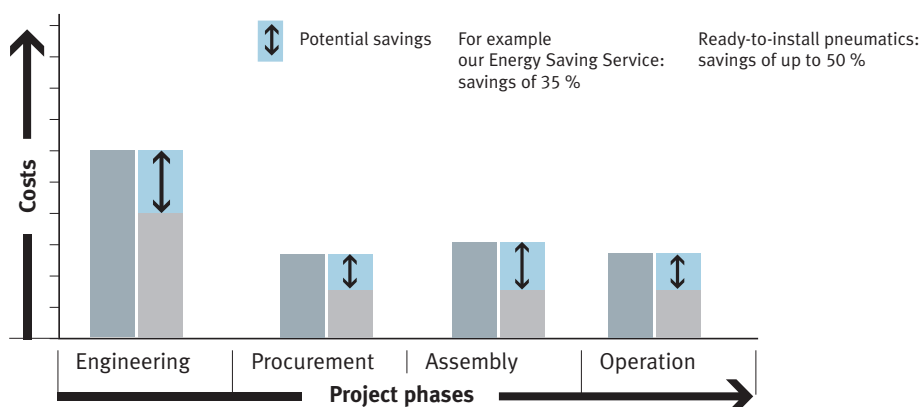
Reduce your vertical manufacturing integration and concentrate on your core business. Save time and money with simple PrePack services, pre-assembled modules or ready-to-install complete solutions.

### Individualised product variants

100 % freedom: application-optimised solutions for customer-specific requirements with regard to function and size – from simple modifications to completely new designs.



### Reduced overall costs in accordance with TCO through targeted use of services from Festo





## Everything from a single source – for valves too

Valves for every conceivable situation – this great diversity has a purpose. It is the basis for maximised process reliability, it covers all requirements and enhances the interconnection between components.

That's why Festo offers everything from a single source: highly versatile, impressive electrical and pneumatic concepts for technically optimised solutions at a reasonable price.


Your advantages with valves from Festo:

- As individual valves, on valve manifolds, or as pre-assembled and tested valve terminals with customer-specific configuration – Festo plug and work®
- Comprehensive documentation
- Maximum diversity for any application
- Maximum quality and service life
- Optimised design

### Where do I use which valve? A quick overview ...

Universal, comprehensive range of valves	
Standardised, highly modular, Vertical stacking	VSVA
Non-standardised, compact design	CPE (high flow rates) VUVG (lower flow rates)
Polymer housings, weight-optimised	VUVB

Specifically developed valve ranges	
Directly actuated, basic functions	MHx
Easy to clean, resistant ...	CDVS
Fast-switching valves, extremely long service life	MH2...4, MHJ
Very compact, pilot actuated	VOVG, CPA-SC

Range/type	Flow rate	Pneumatic connection
VSVA - ISO 15407-1, ISO 5599-1 	500, 1.000, 1.300	M5, G1/4, G1/8
ISO 5599-1 (MDH, MFH, FEBH, MN1H) 	1.200, 2.300, 4.500, 6.000	G1/4, G3/8, G1/2, G3/4
CPE 	400, 800, 1.500, 3.200	M5, M7, G1/8, G1/4, G3/8, QS4/6/8/10/12
Tiger (MFH, MVH) 	500 ... 7.500	G1/8, G1/4, G3/8
VUVB/VTUB-20 	200, 500, 800, 1.000	G1/4, G1/2, QS4/6/8/10
VUVB/VTUB-12 	400	G1/4, QS4/6
Midi MEBH, MEH 	200 ... 700	G1/8
Miniature valve MH1 	10 ... 14	M3, QS3/4
Fast-switching valves MH2...4 	100, 200, 400	M5, M7, G1/8, G1/4, QS4/6/8
Fast-switching valves MHJ 	50 ... 150	QS4/6
VOVG 	200	M5, QS3/4/6
VUVG 	100 ... 750	M3, M5, M7, G1/8, QS3/4/6/8
CPA-SC 	180	M5, QS3/4
CDSV 	650	M7, G1/8, QS6
Micro/Mini (MZH/MYH) 	40 ... 190	M3, M5
Manually and mechanically actuated VHER 	130 ... 4.300	M5, G1/8, G1/4, G1/2
Manually actuated 	65 ... 3.500	M5, G1/8, G1/4, G1/2
On-off valves QH 	120 ... 84.000	G1/4, G3/8, G1/2, G3/4, G1, G11/2

Overview: Festo valves and their primary characteristics



Pressure range, max. external (internal) auxiliary pilot air	Valve functions												Pneumatically actuated							Electrical connection, design	Protection class	
	2/2G/O	3/2G	3/2O	3/2G/O	5/2M	5/2J	5/3G	5/3B	5/3E	Other	Directly actuated	Pilot actuated	Vertical stacking	Electrically actuated								
														5V DC	12V DC	24V DC	110V AC	230V AC	Other			
-0.9 ... 16 (3 ... 10)		■	■	■	■	■	■	■	■			■	■	■	■						M8, M12 type C	IP65
-0.9 ... 16 (3 ... 10)					■	■	■	■	■			■		■		■	■	■	■	■	M12, DESINA type A, BI, C	IP65 ex
-0.9 ... 10 (2.5 ... 10)		■	■	■	■	■	■	■	■								■	■	■		type C, KMYZ-9, M8, CNOMO	IP65
-0.9 ... 10 (1.5 ... 10)		■	■		■	■	■	■	■			■		■		■	■	■	■	■	type B, BI	IP65 ex
-0.9 ... 8 (2 ... 8)		■	■		4/2	4/2						■					■	■	■		type C	IP65
2.8 ... 8		■	■		■	■						■						■				IP65
-0.9 ... 10 (2 ... 8)		■	■		■	■	■	■	■			■		■			■	■	■		M8	IP65
-0.9 ... 8	■	■	■								■					■	■	■			type C	IP40
-0.9 ... 8		■	■		■						■							■			KMH, Soldering base	IP65
0.5 ... 6	■										■					■	■	■		■	KMH, KMYZ-3, type C	IP40 IP65
1.5 ... 8		■	■		■							■				■	■	■				IP40
-0.3 ... 10 (1.5 ... 8)		■	■		■	■	■	■	■			■				■	■	■			KMH	IP40 IP65
-0.9 ... 10 (3 ... 8)	■	■	■		■	■	■	■	■			■						■				IP40
-0.9 ... 10 (3 ... 6)		■	■	■	■	■	■	■	■			■						■			KMH	IP67
2 ... 8		■	■		■	■	■	■	■			■	■					■			Clean Design	IP40
-0.9 ... 10							4/3	4/3	■	■											KMYZ-1	IP65 ex
-0.9 ... 10		■	■		■					■	■	■										IP40
-0.9 ... 30	■										■											IP65

Footnotes: M8 and M12 = to ISO 20401, type A, B, C = port patterns to EN 175301, BI = industry standard (MF coil), K... = specific port patterns, ex = explosion-proof



## Valve terminals – increased productivity, reduced installation costs

Function integration as a mega-trend: the valve terminal is becoming the automation platform of the 21<sup>st</sup> century.

Of course there's still demand for valves; they'll never completely lose their position within the market. But there's hardly an innovation that has shaped automation to such a great extent, or succeeded in reducing installation costs and improving productivity in such a lasting fashion as the valve

terminal, which is actually the sum total of numerous, densely packed valves.

As a market leader and the inventor of the valve terminal, we know where potential still exists, and where new potential can be exploited – to your advantage. This may be through function integration, new flexibility for installation concepts and significantly increased reliability by means of diagnostics and special valves.

Type		Flow rate (litre/min per valve)
VSVA		500, 1.000, 1.300, 2.900
VTSA/VTSA-F		500, 700, 1.000, 1.800, 2.900
MPA/MPM/MPA-S/ MPA-L/MPA-F		360, 700, 900
CPX/MPA		360, 700, 900
CPV		400, 800, 1.600
VUVB, VTUB (VB)		VB12: 400 VB20: 200, 500, 800, 1.000
CPV-SC		170
CPA-SC		180
MH1		10, 14
MHJ/MH2/3/4		MHJ: 50, 100, 150 MH2/3/4: 100, 200, 400
CDVI		650
VTOC		10
CPX-Terminal		
CPI-System		

Overview: Festo valve terminals and their primary characteristics



Number of solenoid coils (max. per valve terminal)	512 decentralised	Electrical inputs (max. per valve terminal)						Electrical connection										Valve properties				Protection			Diagnostics						
		8	16	72	92	144	512	Individual connection	Multipin	AS-Interface	DeviceNet	Profibus	Interbus	CANopen	CC-Link	Ethernet	Integrated controller	Directly actuated	Piloted	Vacuum	Multiple pressure zones	IP40	IP65	Explosion-proof	Status bit	Module-oriented	channel oriented	Preventative maintenance	Web-based, Web monitor		
1-32								■											■	■	■		■								
1-32	■	■	■	■	■	■	■			■	■	■	■	■	■	■	■	■	■	■	■	■	■		■	■	■	■	■	■	■
2-24	■								■	■									■	■	■		■								
2-128	■	■	■	■	■	■	■				■	■	■	■	■	■	■	■	■	■	■	■	■		■	■	■	■	■	■	■
2-16		■	■					■	■	■	■	■	■	■	■				■	■	■		■	■	■	■		■		■	
1-24								■	■										■	■	■		■								
2-16		■	■					■	■	■	■								■	■	■	■		■	■		■		■		
2-24		■	■					■	■	■	■								■	■	■	■		■	■		■		■		
1-22								■	■										■	■	■										
1-10								■											■	■	■		■								
4-24		■	■						■	■									■	■	■		■	■		■	■		■		
16-48									■										■	■	■										
		■	■	■	■	■	■				■	■	■	■	■	■	■						■	■	■	■	■	■	■	■	■
	■										■	■	■	■	■	■	■						■	■	■	■	■	■	■	■	■

## Festo worldwide

### Argentina

Festo S.A.  
Edison 2392  
(B1640 HRV) Martinez  
Prov. Buenos Aires  
Tel. ++54 (0)11/47 17 82 00, Fax 47 17 82 82  
E-mail: info\_ar@festo.com

### Australia

Festo Pty. Ltd.  
Head Office (Melbourne)  
179-187 Browns Road, P.O. Box 261  
Noble Park Vic. 3174  
Call Toll Free 1300 88 96 96  
Fax Toll Free 1300 88 95 95  
Tel. ++ 61(0)3/97 95 95 55, Fax 97 95 97 87  
E-mail: info\_au@festo.com.au

### Austria

Festo Gesellschaft m.B.H.  
Linzer Straße 227  
1140 Wien  
Tel. ++43 (0)1/910 75-0, Fax 910 75-250  
E-mail: automation@festo.at

### Belarus

IP Festo  
Minsk, 220035  
Mascherov Prospekt, 78, Belarus  
Tel. ++375 (0)17/204 85 58, Fax 204 85 59  
E-mail: info\_by@festo.com

### Belgium

Festo Belgium sa/nv  
Rue Colonel Bourg 101  
1030 Bruxelles/Brussel  
Tel. ++32 (0)2/702 32 11, Fax 702 32 09  
E-mail: info\_be@festo.com

### Brazil

Festo Automação Ltda.  
Rua Guiseppa Crespi, 76  
KM 12,5 - Via Anchieta  
04183-080 São Paulo SP-Brazil  
Tel. ++55 (0)11/50 13 16 00, Fax 50 13 18 68  
E-mail: info\_br@festo.com

### Bulgaria

Festo EOOD  
1592 Sofia  
9, Christophor Kolumb Blvd.  
Tel. ++359 (0)2/960 07 12, Fax 960 07 13  
E-mail: info\_bg@festo.com

### Canada

Festo Inc.  
5300 Explorer Drive  
Mississauga, Ontario L4W 5G4  
Tel. ++1 (0)905/624 90 00, Fax 624 90 01  
E-mail: info\_ca@festo.com

### Chile

Festo S.A.  
Avenida Américo Vespucio 760,  
Pudahuel, Santiago  
Tel. +56 2 690 28 00, Fax +56 2 690 28 60  
E-mail: info.chile@cl.festo.com

### China

Festo (China) Ltd.  
1156 Yunqiao Road  
Jinqiao Export Processing Zone, Pudong,  
201206 Shanghai, PRC  
Tel. ++86 (0)21/58 54 90 01, Fax 58 54 03 00  
E-mail: info\_cn@festo.com

### Colombia

Festo Ltda.  
Avenida El Dorado No. 98-43  
Bogotá  
Tel. ++57 (0)1/404 80 88, Fax 404 81 01  
E-mail: festo@festo.com.co

### Croatia

Festo d.o.o.  
Nova Cesta 181  
10000 Zagreb  
Tel. ++385 (0)1/619 19 69, Fax 619 18 18  
E-mail: info\_hr@festo.com

### Czech Republic

Festo, s.r.o.  
Modranská 543/76  
147 00 Praha 4  
Tel. ++420 261 09 96 11,  
Fax ++420 241 77 33 84  
E-mail: info\_cz@festo.com

### Denmark

Festo A/S  
Islevalvej 180  
2610 Rødovre  
Tel. ++45 70 21 10 90, Fax ++45 44 88 81 20  
E-mail: info\_dk@festo.com

### Estonia

Festo OY AB Eesti Filiaal  
Laki 11B  
12915 Tallinn  
Tel. ++372 666 15 60, Fax ++372 666 15 61  
E-mail: info\_ee@festo.com

### Finland

Festo OY  
Mäkituvantie 9, P.O. Box 86  
01511 Vantaa  
Tel. ++358 (09)/87 06 51, Fax 87 06 52 00  
E-mail: info\_fi@festo.com

### France

Festo E.U.R.L.  
ZA des Maisons Rouges  
8 rue du Clos Sainte Catherine  
94367 Bry-sur-Marne cedex  
Numéro Indigo Tel. 0820/20 46 40, Fax 20 46 41  
Tel. ++33 (0)1/48 82 64 00, Fax 48 82 64 01  
E-mail: info\_fr@festo.com

### Germany

Festo AG & Co. KG  
Postfach  
73726 Esslingen  
Ruiter Straße 82  
73734 Esslingen  
Tel. ++49 (0)711/34 70, Fax 347 21 44  
E-mail: info\_de@festo.com

### Greece

Festo Ltd.  
40 Hamosternas Ave.  
11853 Athens  
Tel. ++30 210/341 29 00, Fax 341 29 05  
E-mail: info\_gr@festo.com

### Hong Kong

Festo Ltd.  
6/F New Timely Factory Building,  
497 Castle Peak Road,  
Kowloon, Hong Kong  
Tel. ++ 852/27 43 83 79, Fax 27 86 21 73  
E-mail: info\_hk@festo.com

### Hungary

Festo Kft.  
Csillaghegyi út 32-34.  
1037 Budapest  
Tel. ++36 1/436 51 11, Fax 436 51 01  
E-mail: info\_hu@festo.com

### India

Festo Controls Private Ltd.  
237B,  
Bommasandra Industrial Area,  
Bangalore Hosur Highway,  
Bangalore 560 099  
Tel. ++91 (0)80/22 89 41 00, Fax 783 20 58  
E-mail: info\_in@festo.com

### Indonesia

PT. Festo  
JL. Sultan Iskandar Muda No.68  
Arteri Pondok Indah  
Jakarta 12240  
Tel. ++62 (0)21/27 50 79 00, Fax 27 50 79 98  
E-mail: info\_id@festo.com

### Iran

Festo Pneumatic S.K.  
# 2, 6th street, 16th avenue,  
Teheran 1581975411  
Km 8, Special Karaj Road,  
P.O.Box 15815-1485  
Teheran 1389793761  
Tel. ++98 (0)21 44 52 24 09,  
Fax ++98 (0)21 44 52 24 08  
E-mail: Mailroom@festo.ir

### Ireland

Festo Limited  
Unit 5 Sandlyford Park  
Sandlyford Industrial Estate  
Dublin 18  
Tel. ++ 353(0)1/295 49 55, Fax 295 56 80  
E-mail: info\_ie@festo.com

### Israel

Festo Pneumatic Israel Ltd.  
P.O. Box 1076, Ha'atzma'ut Road 48  
Yehud 56100  
Tel. ++972 (0)3/632 22 66, Fax 632 22 77  
E-mail: info\_il@festo.com

### Italy

Festo S.p.A  
Via Enrico Fermi 36/38  
20090 Assago (MI)  
Tel. ++39 02/45 78 81, Fax 488 06 20  
E-mail: info\_it@festo.com

### Japan

Festo K.K.  
1-26-10 Hayabuchi, Tsuzuki-ku  
Yokohama 224-0025  
Tel. ++81 (0)45/593 56 10, Fax 593 56 78  
E-mail: info\_jp@festo.com

### Korea South

Festo Korea Co., Ltd.  
470-1 Gasan-dong, Geumcheon-gu  
Seoul #153-803  
Tel. ++82 (0)2/850 71 14, Fax 864 70 40  
E-mail: info\_kr@festo.com

### Latvia

Festo SIA  
A. Deglava iela 60  
1035 Riga  
Tel. ++371 67/57 78 64, Fax 57 79 46  
E-mail: info\_lv@festo.com

### Lithuania

Festo UAB  
Karaliaus Mindaugo pr. 22  
3000 Kaunas  
Tel. ++370 (8)7/32 13 14, Fax 32 13 15  
E-mail: info\_lt@festo.com

### Malaysia

Festo Sdn.Berhad  
10 Persiaran Industri  
Bandar Sri Damansara, Wilayah Persekutuan  
52200 Kuala Lumpur  
Tel. ++60 (0)3/62 86 80 00, Fax 62 75 64 11  
E-mail: info\_my@festo.com

### Mexico

Festo Pneumatic, S.A.  
Av. Ceylán 3  
Col. Tequesquihuac  
54020 Tlalneapantla, Edo. de México  
Tel. ++52 (01)55/53 21 66 00, Fax 53 21 66 55  
E-mail: festo.mexico@mx.festo.com

### Netherlands

Festo B.V.  
Schieweg 62  
2627 AN Delft  
Tel. ++31 (0)15/251 88 99, Fax 251 88 67  
E-mail: info@festo.nl

### New Zealand

Festo Limited  
20 Fisher Crescent  
MT. Wellington  
Auckland NZ  
Tel. ++64 (0)9/574 10 94, Fax 574 10 99  
E-mail: info\_nz@festo.com

### Nigeria

Festo Automation Ltd.  
Motorways Centre, First Floor, Block C  
Alausa, Ikeja,  
Lagos, NIGERIA  
Tel. ++234 (0)1/794 78 20, Fax 555 78 94  
E-mail: info\_ng-festo.com

### Norway

Festo AS  
Ole Deviks vei 2  
0666 Oslo  
Tel. ++47 22 72 89 50, Fax ++47 22 72 89 51  
E-mail: info\_no@festo.com

### Peru

Festo S.R.L.  
Calle Amador Merino Reyna #480  
San Isidro  
Lima, Perú  
Tel. ++51 (0)1/222 15 84, Fax 222 15 95  
E-mail: festo.peru@pe.festo.com

### Philippines

Festo Inc.  
KM 18, West Service Road  
South Superhighway  
1700 Paranaque City, Metro Manila  
Tel. ++63 (0)2/776 68 88, Fax 823 42 19  
E-mail: info\_ph@festo.com

### Poland

Festo Sp. z o.o.  
Janki k/Warszawy, ul. Mszczonowska 7  
05090 Raszyn  
Tel. ++48 (0)22/711 41 00, Fax 711 41 02  
E-mail: info\_pl@festo.com

### Romania

Festo S.R.L.  
St. Constantin 17  
010217 Bucuresti  
Tel. ++40 (0)21/310 29 83, Fax 310 24 09  
E-mail: info\_ro@festo.com

### Russia

Festo-RF OOO  
Michurinskiy prosp., 49  
119607 Moscow  
Tel. ++7 495/737 34 00, Fax 737 34 01  
E-mail: info\_ru@festo.com

### Singapore

Festo Pte. Ltd.  
6 Kian Teck Way  
Singapore 628754  
Tel. ++65/62 64 01 52, Fax 62 61 10 26  
E-mail: info@sg.festo.com

### Slovakia

Festo spol. s r.o.  
Gavlovicová ul. 1  
83103 Bratislava 3  
Tel. ++421 (0)2/49 10 49 10, Fax 49 10 49 11  
E-mail: info\_sk@festo.com

### Slovenia

Festo d.o.o. Ljubljana  
IC Trzin, Blatnica 8  
1236 Trzin  
Tel. ++386 (0)1/530 21 00, Fax 530 21 25  
E-mail: info\_si@festo.com

### South Africa

Festo (Pty) Ltd.  
22-26 Electron Avenue, P.O. Box 255  
Isando 1600  
Tel. ++27 (0)11/971 55 00, Fax 974 21 57  
E-mail: info\_za@festo.com

### Spain

Festo Pneumatic, S.A.U.  
Avenida Granvia, 159  
Distrito Económico Granvia L'H  
08908 Hospitalet de Llobregat, Barcelona  
Tel. 901243660, Fax 902243660  
Tel. ++ 3493/261 64 00, Fax 261 64 20  
E-mail: info\_es@festo.com

### Sweden

Festo AB  
Stillmangatan 1, Box 21038  
200 21 Malmö  
Tel. ++46 (0)20/38 38 40, Fax 38 38 10  
E-mail: order@festo.se

### Switzerland

Festo AG  
Moosmattstrasse 24  
8953 Dietikon ZH  
Tel. ++41 (0)44/744 55 44, Fax 744 55 00  
E-mail: info\_ch@festo.com

### Taiwan

Festo Co., Ltd.  
Head Office  
24450, No. 9, Kung 8th Road,  
Linkou 2nd Industrial Zone  
Linkou Hsiang, Taipei Hsien,  
Taiwan, R.O.C.  
Tel. ++886 (0)2 26 01-92 81,  
Fax ++886 (0)2 26 01 92 86-7  
E-mail: festotw@festo.com

### Thailand

Festo Ltd.  
67/1 Moo 6 Phaholyothin Road  
Klong 1, Klong Luang,  
Pathumthani 12120  
Tel. ++66 29 01 88 00, Fax ++66 29 01 88 33  
E-mail: info\_th@festo.com

### Turkey

Festo San. ve Tic. A.S.  
Tuzla Mermerciler Organize  
Sanayi Bölgesi 6/18  
34956 Tuzla - Istanbul/TR  
Tel. ++90 (0)216/585 00 85, Fax 585 00 50  
E-mail: info\_tr@festo.com

### Ukraine

Festo Ukraina  
Borisoglebskaja 11  
Kiev 04070  
Tel. ++380 (0)44/239 24 33, Fax 463 70 96  
E-mail: info\_ua@festo.com

### United Kingdom

Festo Limited  
Applied Automation Centre, Caswell Road  
Brackmills Trading Estate  
Northampton NN4 7PY  
Tel. ++44 (0)1604/66 70 00, Fax 66 70 01  
E-mail: info\_gb@festo.com

### United States

Festo Corporation (New York)  
395 Moreland Road, P.O. Box 18023  
Hauppauge, N.Y. 11788  
Call Toll-free 800/993 3786  
Fax Toll-free 800/963 3786  
Tel. ++ 1(0)314/770 01 12, Fax 770 16 84  
E-mail: customer.service@us.festo.com

### Venezuela

Festo C.A.  
Av. 23, Esquina calle 71, No. 22-62  
Maracaibo, Edo. Zulia  
Tel. ++58 (0)261/759 09 44, Fax 759 04 55  
E-mail: festo@festo.com.ve

### Vietnam

Festo Co., Ltd (Cong Ty TNHH Festo)  
No. 206 Tran Nao Street  
Hoi Binh An, District 2  
Ho Chi Minh City, Vietnam  
Tel. +84 (0)8/740 69 09, Fax 740 69 10  
E-mail: info\_vn@festo.com