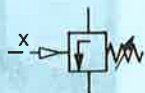
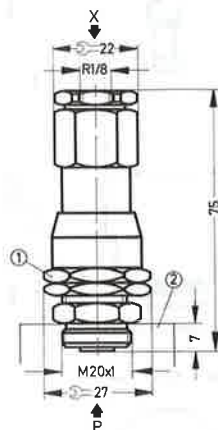


Adjustable pressure actuator Type UV



This adjustable pressure actuator is used when a particular pressure is required in a pneumatic control circuit for a switching sequence.

As soon as the pressure of a signal at port X reaches the value set on the adjustable pressure actuator, the attached basic valve is actuated.

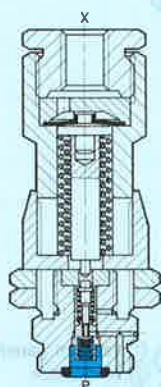


- ① Pressure setting (→ pressure increase)
- ② Basic valve



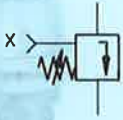
Mounting possibilities:

The adjustable pressure actuator can be fitted to basic valves Type LC, LCO, CLC, CJC and JLC (see basic valves) and to all solenoid valves with port thread M20 × 1, in place of the solenoid actuator. It is not possible to fit the adjustable pressure actuator to Type MC-2-1/8, MOC-3-1/8 and MLC-8-3/8-B.

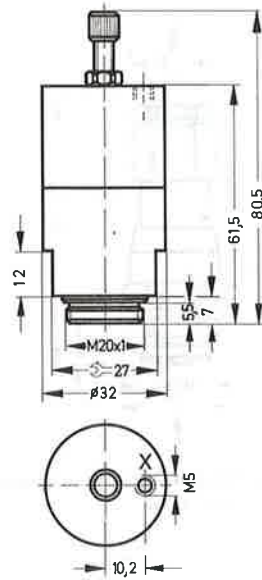


Order code	Part No./Type	4203 UV
Medium		Compressed air, filtered (lubricated or un lubricated)
Design		Valve attachment for pressure-dependent pilot actuation
Mounting		Thread M20 × 1
Port X		G 1/8
Pressure setting range		1 to 10 bar
Maximum pressure of the basic valve		8 bar
Reset hysteresis at 6 bar		0.8 bar
Switching-point accuracy at 6 bar		± 0.1 bar
Temperature range		- 10 to +60 °C
Materials		Housing: aluminium and steel; seals: perbunan
Weight		0.110 kg

Adjustable vacuum actuator Type VUV



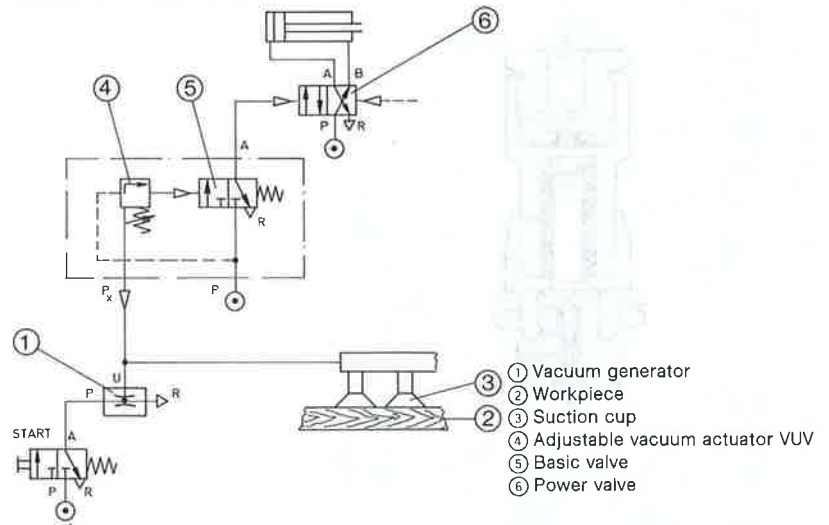
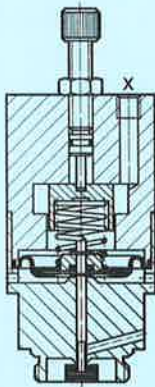
The adjustable vacuum actuator is used to convert a vacuum signal directly into a normal pressure signal. As soon as the vacuum at port X reaches the value which has been set on the adjustable vacuum actuator, the attached basic valve is actuated.



Mounting possibilities:

The adjustable vacuum actuator can be fitted to basic valves Type LC, LCO, CLC, CJC and JLC (see basic valves) and to all solenoid valves with port thread M20 × 1, in place of the solenoid actuator. It is not possible to fit the adjustable pressure actuator to Type MC-2-1/8, MOC-3-1/8 and MLC-8-3/8-B.

Example of application



Order code	Part No./Type	7654 VUV
Medium		Vacuum
Design		Valve actuator for vacuum-controlled actuation of pilot valve
Mounting		Thread M 20 × 1
Port X		M 5
Vacuum range		−0.2 to −0.95 bar (adjustable from −0.25 to −0.6 bar)
Switching hysteresis		Max. 0.2 bar
Max. pressure of the basic valve		8 bar
Temperature range		−10 to +60° C
Materials		Housing: aluminium, brass and steel; seals: NBR
Weight		0.180 kg