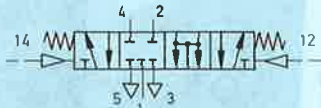


**Double pilot valve,
spring centred
Type VL-5/4-1/4**



Neutral position: 1, 2, 3, 4, 5 closed
With a simultaneous air pulse at 12 and 14:
1, 2, 3, 4, 5 linked.

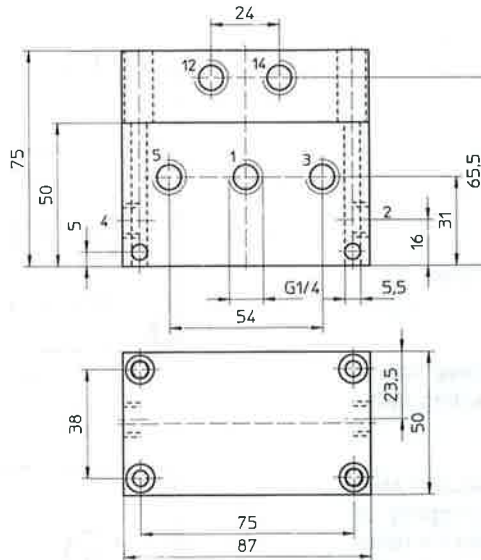
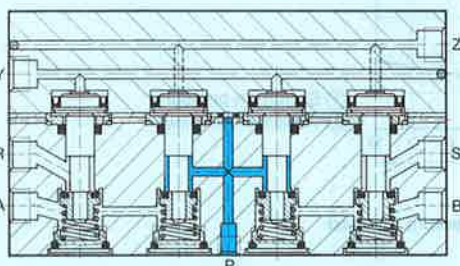
In their neutral position, these valves hold the piston of a double-acting cylinder clamped under pressure.

For this reason, they are particularly suitable for positioning, for stopping in cases of emergency stops and for holding double-acting cylinders in any desired position.

In order to prevent the cylinders from running on, the speed control must be positioned on exhaust port of the valve.

The separately-arranged exhaust outlets R and S make it possible to regulate the advance and return speed of the cylinder by means of directly-screwed-in exhaust port flow controls.

Port flow control with silencer
Order code 4579 GRU-1/4 (see sheet 2.622).

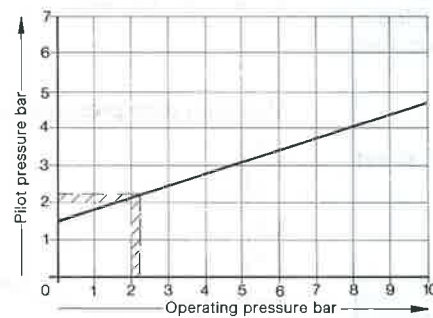


- 1 (P) = Supply port
- 4, 2 (A, B) = Working or outlet lines
- 5, 3 (R, S) = Exhaust
- 12, 14 (Y, Z) = Pilot lines



9

Minimum pilot pressure as a function of operating pressure



Note:
Within the shaded square, the pilot pressure required is higher than the operating pressure.

Order code	Part No./Type	4574 VL-5/4-1/4
Medium		Compressed air, filtered (lubricated or unlubricated)
Design		Poppet valve with spring centering
Mounting		Through-holes in housing
Connection	Working lines	G 1/4
	Pilot lines	G 1/4
Nominal size		7 mm
Standard nominal flow rate (P→A)		680 l/min
Operating pressure range		0 to 10 bar
Pilot pressure range		See graph
Response time at 6 bar		On: 12 ms, Off: 10 ms
Temperature range		-10 to +60 °C
Materials		Housing: blue anodized aluminium; seals: perbunan
Weight		0.835 kg