



CMMT-AS Servo Drive Parametrization via CDSB-A1 Operator Unit

This document describes how to export parameter sets from the Festo Automation Suite CMMT-AS Plug-in to a CDSB-A1 operating panel, download it to the drive and activate it.

CMMT-AS

TitleCMMT-AS Servo Drive Parametrization via CDSB-A1 Operator Unit
Version 1.10
Document no. 100279
Originalen
AuthorFesto

Last saved 17.09.2019

Copyright Notice

This documentation is the intellectual property of Festo AG & Co. KG, which also has the exclusive copyright. Any modification of the content, duplication or reprinting of this documentation as well as distribution to third parties can only be made with the express consent of Festo AG & Co. KG.

Festo AG & Co KG reserves the right to make modifications to this document in whole or in part. All brand and product names are trademarks or registered trademarks of their respective owners.

Legal Notice

Hardware, software, operating systems and drivers may only be used for the applications described and only in conjunction with components recommended by Festo AG & Co. KG.

Festo AG & Co. KG does not accept any liability for damages arising from the use of any incorrect or incomplete information contained in this documentation or any information missing therefrom.

Defects resulting from the improper handling of devices and modules are excluded from the warranty.

The data and information specified in this document should not be used for the implementation of safety functions relating to the protection of personnel and machinery.

No liability is accepted for claims for damages arising from a failure or functional defect. In other respects, the regulations with regard to liability from the terms and conditions of delivery, payment and use of software of Festo AG & Co. KG, which can be found at www.festo.com and can be supplied on request, shall apply.

All data contained in this document do not represent guaranteed specifications, particularly with regard to functionality, condition or quality, in the legal sense.

The information in this document serves only as basic information for the implementation of a specific, hypothetical application and is in no way intended as a substitute for the operating instructions of the respective manufacturers and the design and testing of the respective application by the user.

The operating instructions for Festo products can be found at www.festo.com/sp.

Users of this document (application note) must verify that all functions described here also work correctly in the application. By reading this document and adhering to the specifications contained therein, users are also solely responsible for their own application.

Table of contents

1	Preface	5
2	Components/Software	6
3	Exporting Parameter Sets from the Festo Automation Suite	7
4	Activating a Parameter Set on the Servo Drive.....	9
5	Other Parameter Set Options.....	10
5.1	CMMT-AS Plug-in.....	10
	5.1.1 Page Title Commands	10
	5.1.2 Parameter Set Related Commands	10
5.2	CDSB-A1 Operator Unit	11

1 Preface

This document describes how to export parameter sets from the Festo Automation Suite CMMT-AS Plug-in to a CDSB operating panel and transfer it to the device. This allows for commissioning a servo drive with prepared parameters, e. g. for serial machine production.

2 Components/Software

The procedure described in this document requires the following components:

Type/Name	Version Software/Firmware
CDSB-A1 operator unit	Firmware V1.1 or higher
CMMT-AS servo drive	Firmware V16 or higher
Festo Automation Suite	V1.2 or higher
CMMT-AS Plug-in for Festo Automation Suite	V1.2 or higher

Table 2.1: Components/Software used

3 Exporting Parameter Sets from the Festo Automation Suite

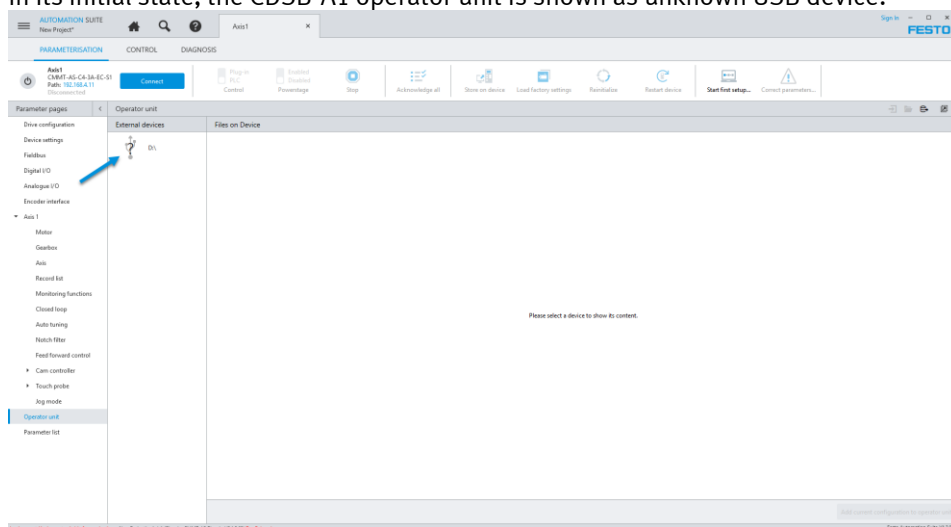
Prerequisite:

Parameters for a CMMT-AS servo drive have been set up properly in the Festo Automation Suite and the CMMT-AS Plug-in.

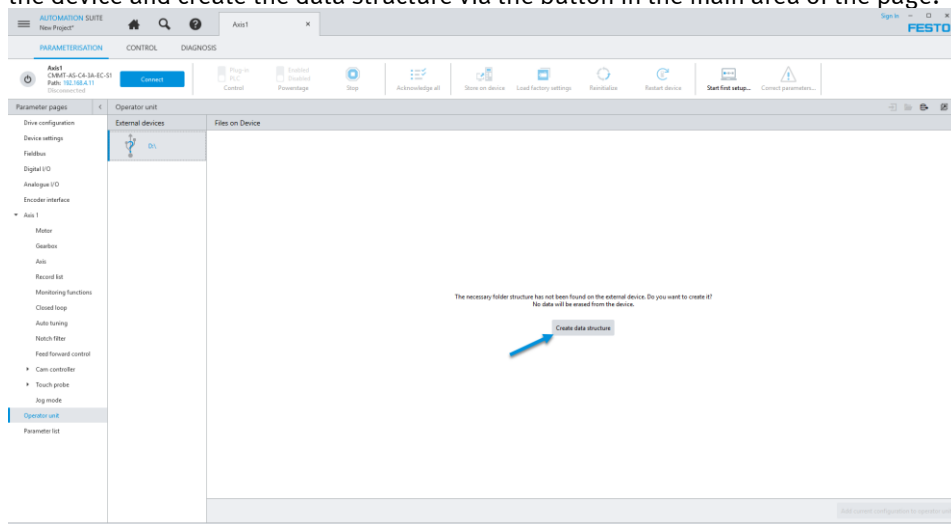
Write access to USB removable drives without encryption (e. g. via Bitlocker) is granted.

Procedure:

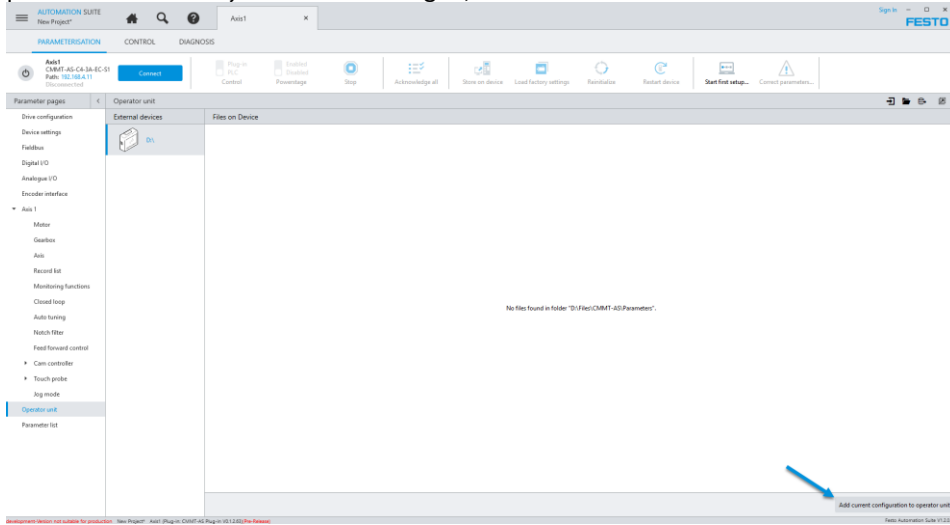
- Connect the CDSB-A1 operator unit via USB to the computer running the Festo Automation Suite.
- In the CMMT-AS Plug-in, select the “Parameterisation” context and navigate to the parameter page “Operator unit”
- In its initial state, the CDSB-A1 operator unit is shown as unknown USB device:



- This is because the proper data structure for CMMT-AS parameter sets has not yet been created. Select the device and create the data structure via the button in the main area of the page:



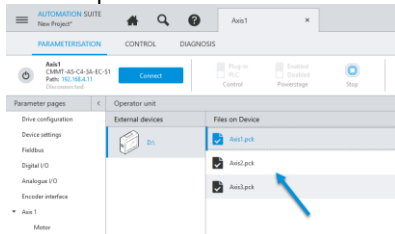
- Now the device is recognized as operator unit. Export the current configuration (i. e. the set of parameters currently active in the Plug-in) to the CDSB-A1 via the button at the bottom right:



- Enter a suitable file name in the pop-up and confirm it via the “Apply” button:



- The parameter set is then written to the CDSB-A1 operator unit and shown in the file list to the right. Several parameter sets can be stored on the same operator unit.

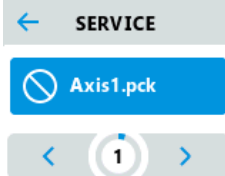


4 Activating a Parameter Set on the Servo Drive

- Disconnect the CDSB-A1 operator unit and attach it to the CMMT-AS servo drive
- In the CDSB-A1 root menu, “CMMT-AS-...” -> “Service” -> “Load Parameter set”



- Choose the parameter set to be activated via the arrow buttons at the bottom.



- To activate a parameter set, tap on its name and acknowledge the dialog.



- The parameter set is downloaded to the device.

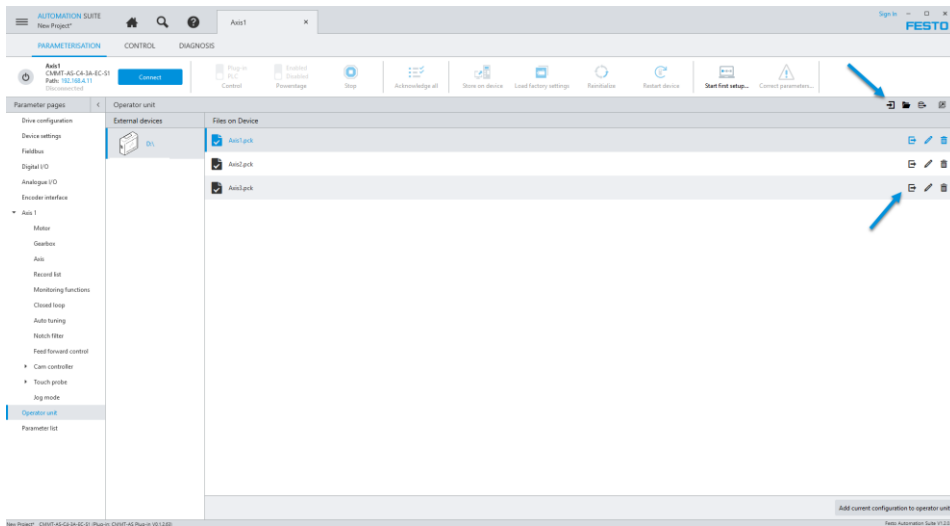


- Once the download has finished, restart the drive in order to activate the parameter set.

5 Other Parameter Set Options

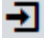
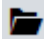
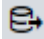
5.1 CMMT-AS Plug-in

Besides exporting the current parameters as parameter sets to the CDSB-A1 operator unit, the CMMT-AS Plug-in supports a couple of additional options via buttons in the page title bar and for each parameter set found on an attached operator unit.






5.1.1 Page Title Commands

Commands in the page title bar do not affect the selected parameter set on the operator unit, but provide access to general parameter set related operations:

-  **Import parameter file from hard disk to operator unit**
Opens a “File open” dialog to search for a parameter file (*.pck) on the local file system. The selected file is then copied to the selected operator unit. This may be used if you received a parameter file from someone else and want to download and activate it on a device.
-  **Open parameter file folder on the selected device**
Opens a Windows Explorer window with the folder on the CDSB-A1 operator unit selected that contains the parameter files.
-  **Export current configuration to hard disk**
Opens a “Save as” dialog which lets you export the current parameter configuration as parameter file (*.pck) on any folder in the local file system. This may be useful if you don’t have access to the servo drive and need to send a parameter file to someone else who in turn downloads and activates it on the device.

5.1.2 Parameter Set Related Commands

-  **Export to hard disk**
Opens a “Save as” dialog in order to copy the parameter file to any location in the local file system.
-  **Rename**
Renames the parameter file on the operator unit.
-  **Delete file**
Deletes the parameter file from the operator unit

5.2 CDSB-A1 Operator Unit

In addition to downloading parameter files to the CMMT-AS servo drive, the parameter set currently active on the device can be transferred to the operator unit instead. This is useful for creating a parameter backup without having to connect to the device from a computer running the Festo Automation Suite and the CMMT-AS Plug-in.

To transfer the active parameters to the CDSB-A1 operator unit:

- Choose “CMMT-AS-...” -> “Service” -> “Load Parameter set” from the CDSB-A1 root menu and acknowledge the dialog that is shown.



- The parameters are then stored in a file called “param.pck”. If the file already exists on the operator unit, it is overwritten.
- Disconnect the operator unit from the servo drive and connect it to a computer via USB.
- Either manually copy the parameter file from the folder “\Files\CMMT-AS\Parameters” on the operator unit or open a CMMT-AS Plug-in instance in Festo Automation Suite and transfer the parameter file from the operator unit via the “Operator unit” parameter page, using the “Export to hard disk” function.

Please note:

*.pck parameter files cannot be imported into a Festo Automation Suite project. Thus, a parameter file generated by a CMMT-AS Plug-in instance or by transferring it from the servo drive to a computer via the CDSB-A1 operator unit can be transferred to another drive, but the parameter settings themselves cannot be modified.

*.pck files do not substitute backups of the original Festo Automation Suite project!