

Extra low voltage DC servo drives CMMT-ST

FESTO



Compact
and
low-cost!

Impressive performance!

Highlights

- Compact DC servo drive
- Control via EtherNet/IP, Modbus TCP, EtherCAT or PROFINET
- Position, speed and torque control
- Built-in Record Table to configure up to 128 motion profiles with sophisticated sequencing
- DC servo drive for stepper and BLDC servo motors
- Integrated webserver for easy access via web browser
- Integrated safety functions STO and SS1

The low-cost CMMT-ST DC servo drives pack extensive functionality into a compact form factor.

Dynamic performance

The extra low voltage servo drives CMMT-ST provide excellent performance at a significantly lower cost than a comparable AC servo drive. For low power applications, under 150 W, use a standard 24 V load supply. Or double the speed and run the CMMT-ST at 48 VDC for applications up to 300 W.

Perfect for lightweight applications where lower costs and compact servo drives are the priority.

Fieldbus support

CMMT-ST servo drives support EtherNet/IP, Modbus TCP, EtherCAT, or PROFINET. Festo provides easy-to-use Add-On Instructions (AOI) and function blocks for simple integration to your PLC, including Festo, Allen-Bradley, Siemens, Omron, and more.

CMMT-ST servo drives support standard PLCopen and Siemens function blocks. And for applications that require interpolated movements, they can be used with EtherCAT or Siemens motion controllers.

EtherNet/IP™



EtherCAT®



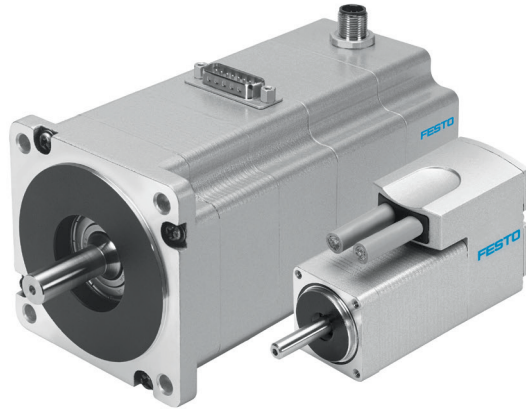
Motors

Festo stepper motors **EMMS-ST** with incremental encoder feedback

Motors available in four standard sizes: NEMA 11, 17, 23, 34

Optional integrated holding brake
Motor and encoder cables available from 1.5...10 m (custom cables up to 25 m upon request)

Robust connectors for reliable use in industrial applications



CMMT-ST servo drives also support **BLDC servo motors** and motors with incremental or **BiSS-C absolute encoder** feedback

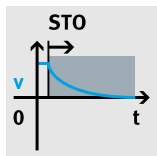


Benefits of CMMT-ST DC servo drives

| Functionality | Benefit |
|---|--|
| Sophisticated closed-loop control for EMMS-ST stepper motors with encoder feedback | <ul style="list-style-type: none"> Servo functionality at a significantly lower price than AC servo drives Improved performance versus open-loop stepper motors <ul style="list-style-type: none"> No position losses Torque/force control Improved dynamics Reduced noise, vibration, heat, and energy consumption |
| Integrated webserver to upload and download firmware and drive parameter files | <ul style="list-style-type: none"> Easy access to drive status via a web browser Simple drive duplication and backup saves time for OEMs |

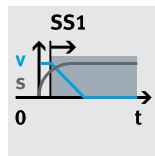
Safety

Built-in servo drive safety for easy integration into your machine



Safe Torque Off (STO)

Remove power from the motor



Safe Stop 1 (SS1)

Controlled deceleration + STO

Fast Delivery!

- ★ Ships in 1 business day from local stock
- Stocked products include:
 - CMMT servo drives and accessories
 - EMMS-ST motors
 - Motor and encoder cables in fixed lengths 1.5...10 m
 - Motor mounting kits for Festo actuators

| Summary | | | | |
|--------------------------|--------|-------------------------------------|---------------------|---------------------|
| Fieldbus | | EtherNet/IP and Modbus TCP | EtherCAT | PROFINET |
| Type code | | CMMT-ST-C8-1C-EP-SO | CMMT-ST-C8-1C-EC-SO | CMMT-ST-C8-1C-PN-SO |
| Part number | | 8084006 | 8084005 | 8084004 |
| Point-to-point movements | | Yes | Yes | Yes |
| Interpolated movements | | No | Yes | Yes |
| Digital I/O control | | Digital I/O for simple applications | | |
| Current (nominal / peak) | [A] | 8 / 10 | | |
| Load voltage | [V DC] | 24...48 | | |
| Power (nominal / peak) | [W] | 300 / 400 | | |

Additional information at [festo.com/CMMT-ST](https://www.festo.com/CMMT-ST)

Festo North America

www.festo.com