



Festo SE & Co. KG

Connecting cable

NEBV-C-S...WA...HS-K...-LE...-S10

Postfach
73726 Esslingen
Germany
+49 711 347-0
www.festo.com

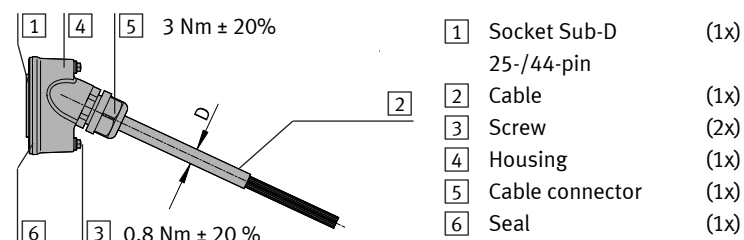
1. Applicable documents

All available documents for the product → www.festo.com/pk

2. Intended use

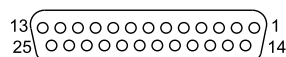
Connecting cable for valve terminals with multi-pin.

3. Design

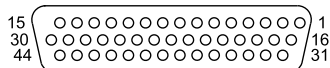


4. Position of the pins

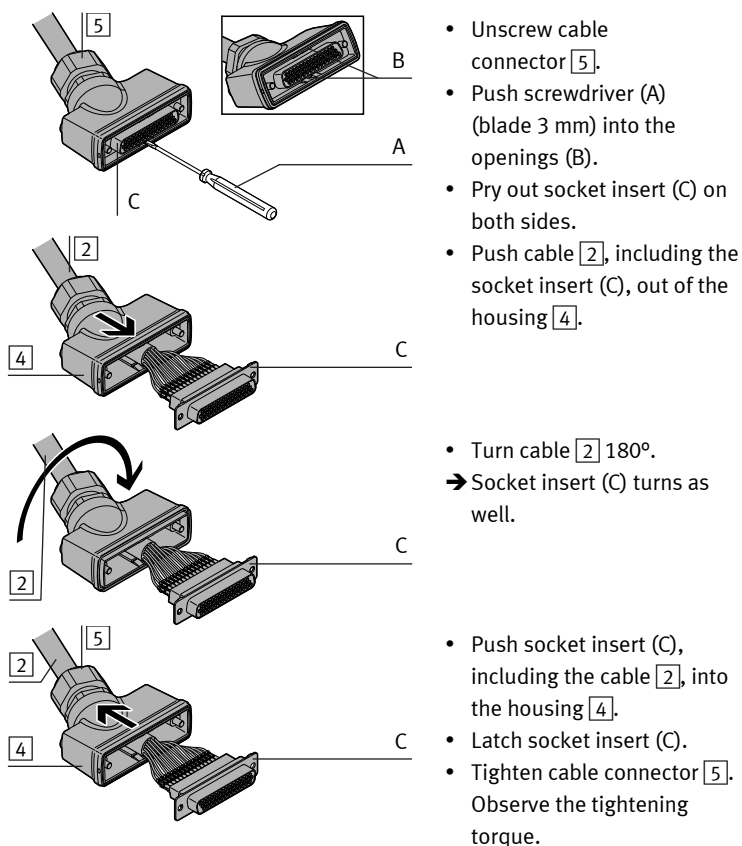
Socket **1** (25-pin)



Socket **1** (44-pin)



5. Changing the alignment of the socket **1**



6. Pin allocation

Colour code ¹⁾	Pin	
	Sub-D 25-pin	Sub-D 44-pin
WH	1	1
BN	2	2
GN	3	3
YE	4	4
GY	5	5
PK	6	6
Caption	7	7
RD	8	8
BK	9	9
VT	10	10
GYPK	11	11
RDBU	12	12
WHGN	13	13
BNGN	14	14
WHYE	15	15
YEBN	16	16
WHGY	17	17
GYBN	18	18
WHPK	19	19
PKBN	20	20
WHBU	21	21
BNBU	22	22
WHRD	23	23
BNRD	24	24
WHBK	25	25
BNBK	-	26
GYGN	-	27
YEGY	-	28
PKGN	-	29
YEPK	-	30
GNBU	-	31
YEBU	-	32
-	-	33 ... 40
GNRD	-	41
YERD	-	42
GNBK	-	43
YEBK	-	44

7. Technical data

NEBV-C-...-K...-LE...-S10	S1WA25HS	S7WA44HS
Cable composition	[mm ²] 25x0.34	36x0.25
Current rating	[A] 2.6	0.86
Operating voltage range DC	U _B [V] 0 ... 30	0 ... 30
Surge resistance	[kV] 2.4	2.4
Cable diameter	D [mm] 10.2 ± 0.25	9.6 ± 0.2
Cable bending radius		
Fixed cable installation	R [mm] ≥ 41	≥ 39
Flexible cable installation	R [mm] ≥ 122	≥ 115
Protection class in mounted status	IP65/IP67/IP69K	
Ambient temperature		
Fixed cable installation	[°C] -	
Flexible cable installation	[°C] -5 ... +60	
Cable sheath material	PVC	

¹⁾ Colour code in accordance with IEC 60757:1983-01