

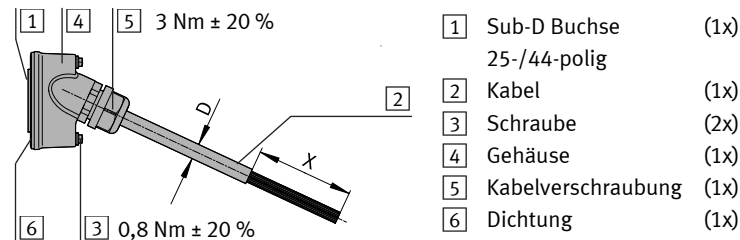
FESTO

Festo AG & Co. KG

Postfach
73726 Esslingen
Deutschland
+49 711 347-0
www.festo.com

Verbindungsleitung NEBV-C-S1WA...-F-...-N-LE...-S10

1. Teileliste



⚠ Warnung

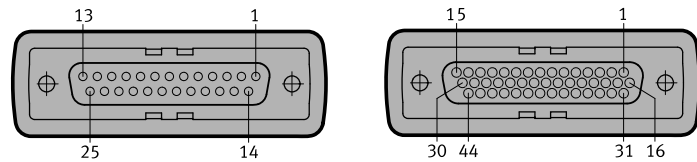
Elektrische Spannung.
Verletzung durch Stromschlag.

- Stromversorgung vor Montagearbeiten abschalten.

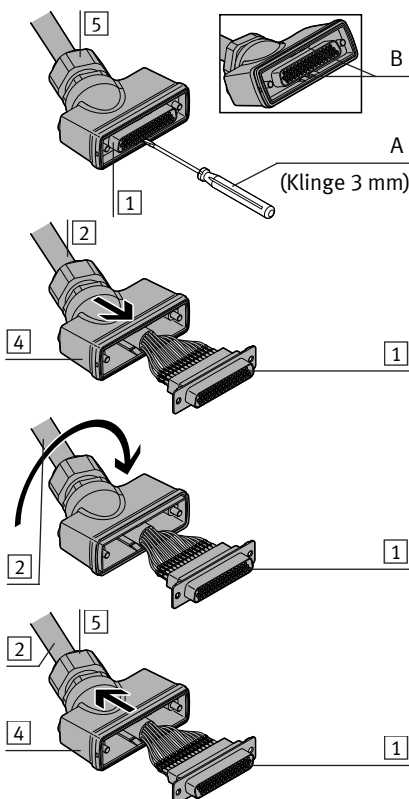
2. Lage der Pins

Buchse 1 (25-polig)

Buchse 1 (44-polig)



3. Ausrichtung der Buchse ändern



- Kabelverschraubung 5 aufdrehen.
- Schraubendreher (A) in die Öffnungen (B) schieben.
- Buchse 1 beidseitig heraushebeln.
- Kabel 2 inklusive der Buchse 1 aus dem Gehäuse 4 herauschieben.
- Kabel 2 um 180° drehen. Kontrolle: Buchse 1 dreht sich mit.

- Buchse 1 inklusive dem Kabel 2 in das Gehäuse 4 schieben.
- Buchse 1 einrasten.
- Kabelverschraubung 5 festdrehen. Anziehdrehmoment einhalten.

4. Kontaktbelegung

Farbcode ¹⁾	Pins	
	Sub-D (25-polig)	Sub-D (44-polig)
WH	1	1
BN	2	2
GN	3	3
YE	4	4
GY	5	5
PK	6	6
BU	7	7
RD	8	8
BK	9	9
VT	10	10
GYPK	11	11
RDBU	12	12
GNWH	13	13
BNGN	14	14
YEWL	15	15
BNYE	16	16
GYWH	17	17
BNGY	18	18
WHPK	19	19
BNPK	20	20
BUWH	21	21
BNBU	22	22
RDWH	23	23
BNRD	24	24
BKWH	25	25
BKBN	-	26
GNGY	-	27
YEGY	-	28
GPNK	-	29
YEPK	-	30
GNBU	-	31
YEBU	-	32
-	-	33...40
RDGN	-	41
RDYE	-	42
BKGN	-	43
BKYE	-	44

5. Technische Daten

NEBV-C-...-F-...-N-LE...-S10	S1WA25	S1WA44
	Sub-D (25-polig)	Sub-D (44-polig)
Kabelaufbau [mm ²]	25 x 0,34	36 x 0,25
Kabeldurchmesser D [mm]	10,2 ± 0,25	9,6 ± 0,3
Min. Kabel-Biegeradius R [mm]		
bei flexibler Verlegung	147	116
bei fester Verlegung	41	39
Freie Kabelenden X [mm]	60	
Schutzart (in montiertem Zustand)	IP65/IP67/IP69K	
Umgebungstemperatur [°C]	-5 ... +60	
Werkstoff-Hinweis	RoHS konform	
Werkstoffinformation		
Kabelmantel	PVC	

¹⁾ Farbcode nach IEC 60757:1983-01

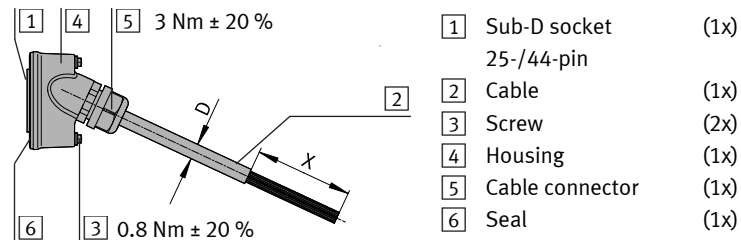
FESTO

Festo AG & Co. KG

Postfach
73726 Esslingen
Germany
+49 711 347-0
www.festo.com

Connecting cable NEBV-C-S1WA...-F-...-N-LE...-S10

1. Parts list



Warning

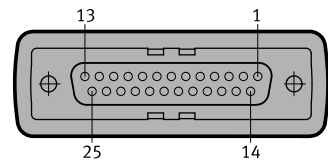
Electric voltage.

Injury due to electric shock.

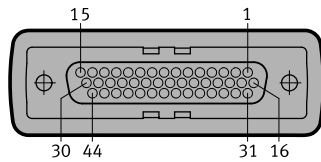
- Switch off power supply before assembly work.

2. Position of the pins

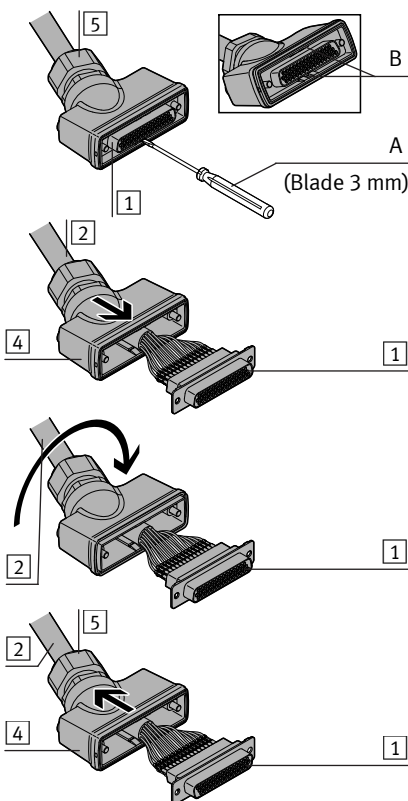
Socket **1** (25-pin)



Socket **1** (44-pin)



3. Changing the alignment of the socket



- Unscrew cable connector **5**.
- Push screwdriver (A) into the ports (B).
- Pry out socket **1** on both sides.
- Push cable **2**, including the socket **1**, out of the housing **4**.
- Turn cable **2** 180°. Check: Socket **1** rotates at the same time.
- Push socket **1**, including the cable **2**, into the housing **4**.
- Engage socket **1**.
- Tighten cable connector **5**. Observe the tightening torque.

4. Pin allocation

Colour code ¹⁾	Pins	
	Sub-D (25-pin)	Sub-D (44-pin)
WH	1	1
BN	2	2
GN	3	3
YE	4	4
GY	5	5
PK	6	6
BU	7	7
RD	8	8
BK	9	9
VT	10	10
GYPK	11	11
RDBU	12	12
GNWH	13	13
BNGN	14	14
YEWB	15	15
BNYE	16	16
GYWH	17	17
BNGY	18	18
WHPK	19	19
BNPK	20	20
BUWH	21	21
BNBU	22	22
RDWH	23	23
BNRD	24	24
BKWH	25	25
BKBN	–	26
GNGY	–	27
YEGY	–	28
GNPK	–	29
YEPK	–	30
GNBU	–	31
YEBU	–	32
–	–	33...40
RDGN	–	41
RDYE	–	42
BKGN	–	43
BKYE	–	44

5. Technical data

NEBV-C-...-F-...-N-LE...-S10	S1WA25	S1WA44
	Sub-D (25-pin)	Sub-D (44-pin)
Cable composition	[mm ²] 25 x 0.34	36 x 0.25
Cable diameter	D [mm] 10.2 ± 0.25	9.6 ± 0.3
Min. cable bending radius	R [mm]	
with flexible installation	147	116
with fixed installation	41	39
Free cable ends	X [mm] 60	
Degree of protection (in mounted status)	IP65/IP67/IP69K	
Ambient temperature	[°C] –5 ... +60	
Note on materials	RoHS-compliant	
Information on materials		
Cable sheath	PVC	

¹⁾ Colour code in accordance with IEC 60757:1983-01