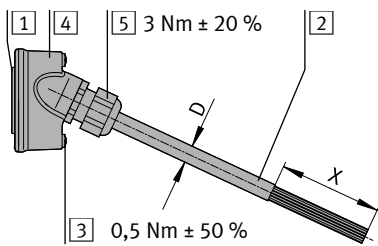


Verbindungsleitung NEBV-S1WA...-K-...-N-LE...-S9

1. Teileliste



- | | | |
|----------|--------------------|------|
| 1 | D-SUB Federleiste | (1x) |
| | 25-/44-polig | |
| 2 | Kabel | (1x) |
| 3 | Schraube | (2x) |
| 4 | Gehäuse | (1x) |
| 5 | Kabelverschraubung | (1x) |

⚠ Warnung

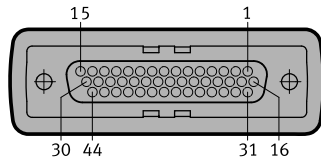
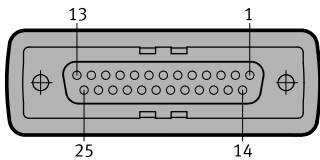
Elektrische Spannung.
Verletzung durch Stromschlag.

- Stromversorgung vor Montagearbeiten abschalten.

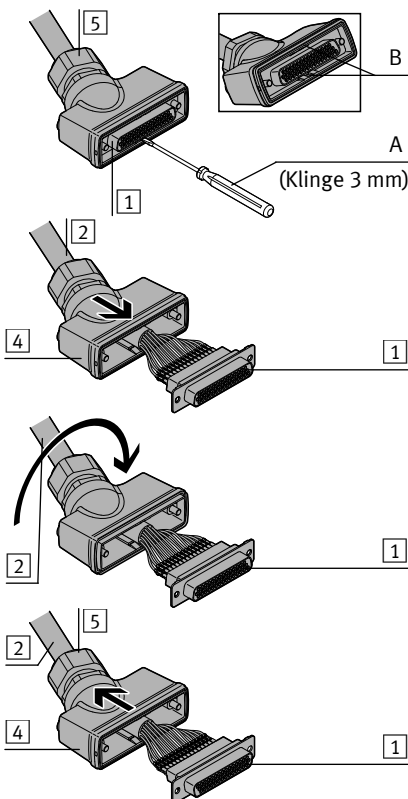
2. Kontaktbelegung

Federleiste **1** (25-polig)

Federleiste **1** (44-polig)



3. Ausrichtung der Federleiste **1** ändern



- Kabelverschraubung **5** aufdrehen.
- Schraubendreher (A) in die Öffnungen (B) schieben.
- Federleiste **1** beidseitig heraus hebeln.
- Kabel **2** inklusive der Federleiste **1** aus dem Gehäuse **4** herausschieben.
- Kabel **2** um 180° drehen. Federleiste **1** dreht sich mit.
- Federleiste **1** inklusive dem Kabel **2** in das Gehäuse **4** schieben. Federleiste **1** einrasten.
- Kabelverschraubung **5** festdrehen. Anziehdrehmoment einhalten.

4. Kontaktbelegung NEBV-S1WA...-K-...-N-LE...-S9

Aderfarbe	Farbcode ¹⁾	D-SUB (25-polig)	D-SUB (44-polig)
Weiß	WH	1	1
Braun	BN	2	2
Grün	GN	3	3
Gelb	YE	4	4
Grau	GY	5	5
Rosa	PK	6	6
Blau	BU	7	7
Rot	RD	8	8
Schwarz	BK	9	9
Violett	VT	10	10
Grau-Rosa	GYPK	11	11
Rot-Blau	RDBU	12	12
Grün-Weiß	GNWH	13	13
Braun-Grün	BNGN	14	14
Gelb-Weiß	YEWB	15	15
Braun-Gelb	BNYE	16	16
Grau-Weiß	GYWH	17	17
Braun-Grau	BNGY	18	18
Weiß-Rosa	WHPK	19	19
Braun-Rosa	BNPK	20	20
Blau-Weiß	BUWH	21	21
Braun-Blau	BNBU	22	22
Rot-Weiß	RDWH	23	23
Braun-Rot	BNRD	24	24
Schwarz-Weiß	BKWH	25	25
Schwarz-Braun	BKBN		26
Grün-Grau	GNGY		27
Gelb-Grau	YEGY		28
Grün-Rosa	GNPK		29
Gelb-Rosa	YEPK		30
Grün-Blau	GNBU		31
Gelb-Blau	YEBU		32
Rot-Grün	RDGN		33
Rot-Gelb	RDYE		34
Schwarz-Grün	BKGN		35
Schwarz-Gelb	BKYE		36
Blau-Grau	BUGY		37
Blau-Rosa	BUPK		38
Rot-Grau	RDGY		39
Rot-Rosa	RDPK		40
Schwarz-Grau	BKGY		41
Schwarz-Rosa	BKPK		42
Schwarz-Blau	BKBU		43
Schwarz-Rot	BKRD		44

5. Technische Daten

NEBV-S1WA...-K-...-N-LE...-S9	S1WA25	S1WA44	
	D-SUB (25-polig)	D-SUB (44-polig)	
Kabelaufbau	[mm ²]	25x0,34	44x0,14
Kabeldurchmesser	D [mm]	10,2 ± 0,3	
Min. Kabel-Biegeradius	R [mm]	122	
Freie Kabelenden	X [mm]	60	
Schutzart		IP65/IP67	
Umgebungstemperatur	[°C]	-5 ... +80	
Werkstoff-Hinweis		RoHS konform	
Werkstoffinformation			
Kabelmantel		PVC	

¹⁾ Farbcode nach IEC 60757

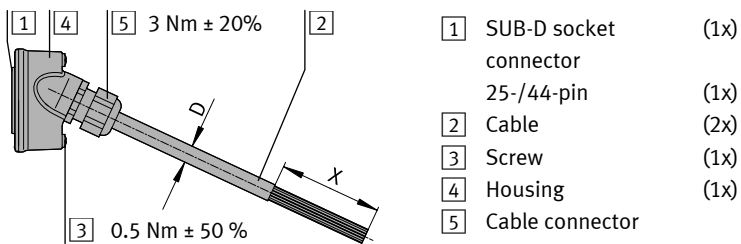
FESTO

Festo AG & Co. KG

Postfach
73726 Esslingen
Germany
+49 711 347-0
www.festo.com

Connecting cable NEBV-S1WA...-K-...-N-LE...-S9

1. Parts list



Warning

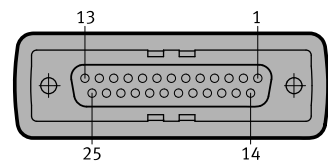
Electric voltage.

Injury due to electric shock.

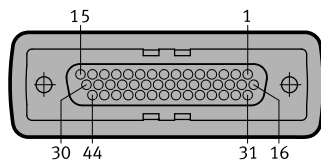
- Switch off power supply before assembly work.

2. Pin allocation

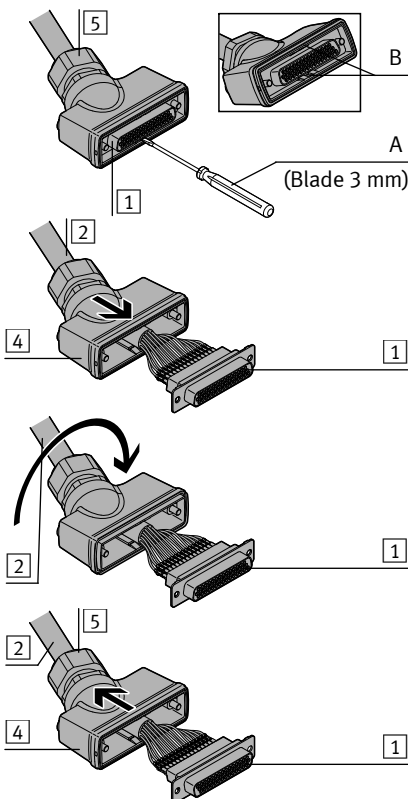
Socket connector 1 (25-pin)



Socket connector 1 (44-pin)



3. Change alignment of the socket connector 1



- Unscrew cable connector 5.
- Push screwdriver (A) into the ports (B).
- Lever up socket connector 1 on both sides.
- Push cable 2, including the socket connector 1, out of the housing 4.
- Turn cable 2 180°. Socket connector 1 rotates along with it.
- Push socket connector 1, including the cable 2, into the housing 4. Engage socket connector 1.
- Tighten cable connector 5. Observe the tightening torque.

4. Pin allocation NEBV-S1WA...-K-...-N-LE...-S9

Wire colour	Colour code ¹⁾	SUB-D (25-pin)	SUB-D (44-pin)
White	WH	1	1
Brown	BN	2	2
Green	GN	3	3
Yellow	YE	4	4
Grey	GY	5	5
Pink	PK	6	6
Blue	BU	7	7
Red	RD	8	8
Black	BK	9	9
Purple	VT	10	10
Grey-pink	GYPK	11	11
Red-blue	RDBU	12	12
Green-white	GNWH	13	13
Brown-green	BNGN	14	14
Yellow-white	YEWL	15	15
Brown-yellow	BNYE	16	16
Grey-white	GYWH	17	17
Brown-grey	BNGY	18	18
White-pink	WHPK	19	19
Brown-pink	BNPK	20	20
Blue-white	BUWH	21	21
Brown-blue	BNBU	22	22
Red-white	RDWH	23	23
Brown-red	BNRD	24	24
Black-white	BKWH	25	25
Black-brown	BKBN		26
Green-grey	GNGY		27
Yellow-grey	YEGY		28
Green-pink	GNPK		29
Yellow-pink	YEPK		30
Green-blue	GNBU		31
Yellow-blue	YEBU		32
Red-green	RDGN		33
Red-yellow	RDYE		34
Black-green	BKGN		35
Black-yellow	BKYE		36
Blue-grey	BUGY		37
Blue-pink	BUPK		38
Red-grey	RDGY		39
Red-pink	RDPK		40
Black-grey	BKGY		41
Black-pink	BKPK		42
Black-blue	BKBU		43
Black-red	BKRD		44

5. Technical data

NEBV-S1WA...-K-...-N-LE...-S9	S1WA25	S1WA44	
	SUB-D (25-pin)	SUB-D (44-pin)	
Cable composition	[mm ²]	25x0.34	44x0.14
Cable diameter	D [mm]	10.2 ± 0.3	
Min. cable bending radius	R [mm]	122	
Free cable ends	X [mm]	60	
Protection class		IP65/IP67	
Ambient temperature	[°C]	-5 ... +80	
Note on materials		RoHS-compliant	
Information on materials			
Cable sheath		PVC	

¹⁾ Colour code in accordance with IEC 60757