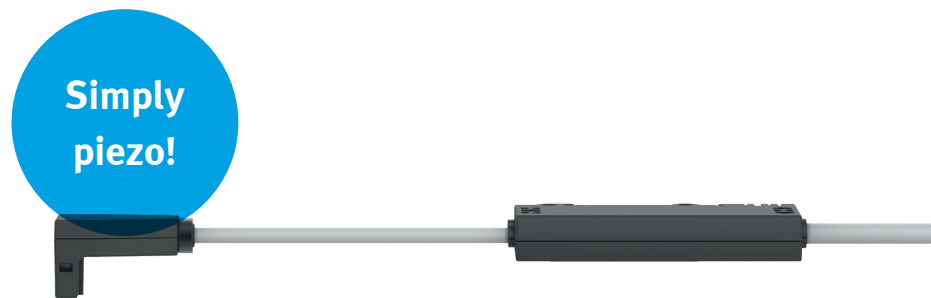


# E-box VAVE-P electronics module for piezo valves

FESTO



## Simple and efficient!

### Highlights

- Simple open-loop control, 2-channel, with the necessary electronics for controlling piezo valves
- Offers all the benefits of piezo technology and is easy to use
- Wide range of applications
- Suitable for piezo valves from Festo
- Compact

Take advantage of the benefits of piezo technology and simply replace proportional solenoid valves with piezo valves from Festo and the compact piezo E-box VAVE-P for control. Piezo technology is characterised by proportional behaviour, extreme durability, very quiet operation, high precision, very low power consumption and therefore hardly any heat build-up. It is ideal in applications where energy efficiency or avoiding heat generation is important.

### Simple and effective

The simple open-loop control electronics are suitable for the Festo portfolio of piezo valves. Voltage generation and the 2-channel driver stage with current limitation for the piezo valves are built in.

### Suitable for all piezo valves

The piezo E-box VAVE-P comes in a number of variants that are suitable for all piezo valves from Festo. The two channels can each be used for two 2/2-way piezo valves VEMR and VEAE or one 3/3-way piezo valve VEMC and VEMP.

### Clever technology for a variety of applications

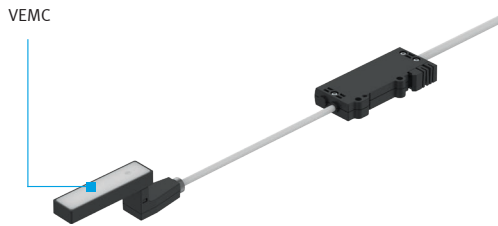
The piezo box can be used effortlessly in many applications thanks to the two inputs of 0 ... 10 V or the pulse width modulation of 10 V with 0 ... 100% pulse width and the flexible power supply of 12 ... 24 V  $\pm$ 10%. And it makes using piezo valves from Festo very easy.

# E-box VAVE-P

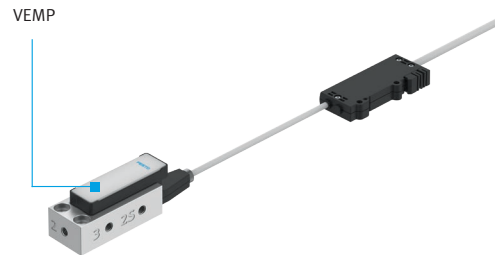
## electronics module for piezo valves

### The variants

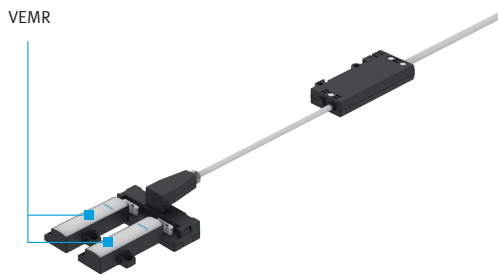
The piezo E-box VAVE-P lets you replace proportional solenoid valves with piezo valves from Festo quickly and easily – and enjoy all the benefits of piezo technology.



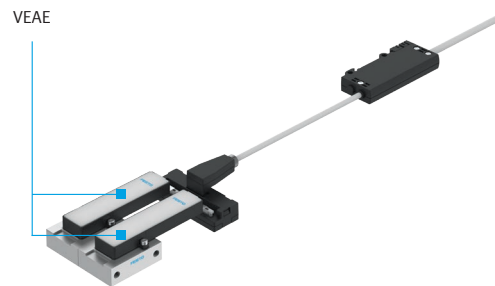
E-box for piezo valve VEMC



E-box for piezo valve VEMP or the plug base



E-box and plug base for two piezo valves VEMR



E-box and plug base for two piezo valves VEAE

To connect two piezo valves VEMR, you need the E-box for VEMP/plug base and the plug base for the piezo valves VEMR; for two piezo valves VEAE you need the E-box for VEMP/plug base and the plug base for the piezo valves VEAE.

### Technical data

Electrical connection	300 mm cable with open wires at the end, 100 mm cable to the piezo valve
Supply voltage	12 ... 24 V DC $\pm 10\%$
Input voltage	0 ... 10 V DC 10 V leads to 310V at the piezo output
Operating temperature	-10 °C ... 60 °C