

# Miniature pilot valve for the VUVG to expand the MHA1 series

FESTO



## Small and inexpensive

### Highlights

- Proven technology
- Holding current reduction
- Can be used for gases
- Degree of protection IP40
- Suitable for vacuum
- Highly visible LED
- Supplied pre-assembled and tested on request

**Extremely small, fast, flexible and durable – that sums up the pilot valve of the VUVG. Its size makes it ideal in tight spaces and it comes complete with vacuum functions. Its reliability, even during 24-hour operation and with 100% duty cycles, is exemplary. It is used in medical devices as well as for liquid handling in laboratory automation.**

### Proven technology

The normally closed 3/2-way valve is really worth the money. Customers who already use the VUVG get double the benefit, as having E-boxes and cables that are identical to the VUVG further reduces their management and warehousing costs.

### Extremely versatile

Individual valves can be linked via a pneumatic sub-base, with electrical connections horizontal, on top and with flying leads.

### Fast and miniaturised

With switching times of approx. 5 ms and a flow rate of 10 l/min, the valve is both fast and small and can also easily accommodate vacuum functions. The 100% duty cycle and the three-shift operation guarantee maximum cost-effectiveness.

### Area of application

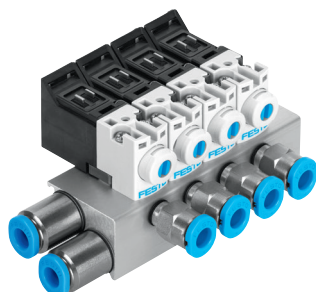
It is used wherever a basic switching valve for gases is required. For example, it can be used in medical devices for switching pneumatically operated instruments or in laboratory automation to switch pressure on fluids.

# Miniature pilot valve for the VUVG to expand the MHA1 series

## Configuration examples



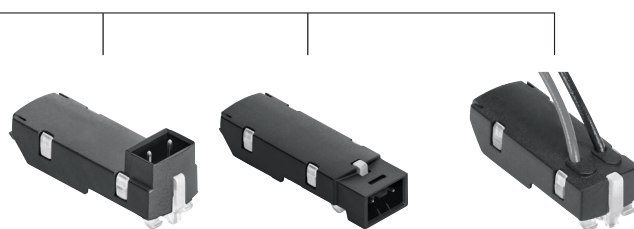
Individual sub-base valve with E-box VAVE-...-LR with holding current reduction and LED in IP40.



Individual valves, pre-mounted on a PR manifold (individual connection)

## Range for E-boxes for the variant to IP40

Extremely versatile thanks to electrical connections in three different directions.



### VAVE-L1-...-LR

E-Box with holding current reduction

...-1S2-LR

...-1H2-LR

...-1S3-LR

...-1H3-LR

...-1L1-LR

...-1L2-LR

...-1L3-LR

...-1L4-LR

### VAVE-L1-...-LP

E-Box without holding current reduction

...-1VS2-LP

...-1VH2-LP

...-1VS3-LP

...-1VH3-LP

...-1VL1-LP

...-1VL2-LP

...-1VL3-LP

...-1VL4-LP

Technical data	
Function	3/2 NC, manual override (push/lock)
Input pressure [bar]	0 ... 8 (relative) vacuum on request
Bursting pressure [bar]	40
Pressure port 1 [mm DN]	0.65
Flow rate 1 → 2	10 l/min at 6 bar ( $\Delta P = 1$ bar), 4 l/min at 2 bar ( $\Delta P = 1$ bar)
Exhaust port 3 [mm DN]	0.7
Flow rate 2 → 3 [l/min]	11 at 6 bar ( $\Delta P = 1$ bar)
Electrical interface	24 V DC, 1.1 W (0.35 W with holding current reduction), 100% duty cycle Other voltages as part of the MHA1 series
Switching time [ms]	<5
Max. switching frequency [Hz]	10
Leakage [l/h]	<0.5
Media	Air, inert gases
Size with E-box [mm]	28.5 x 20 x 10
Protection class	IP40