



Proportional-pressure regulator VPPE



Highlights

- Good control behaviour
- Excellent value for money
- Cu/Ni/Zn-free for battery production
- Ducted exhaust air
- Cost-effective Modbus RTU
- Easy to operate
- Tamper-proof
- Display shutdown
- Setting of the pressure range

Excellent characteristics for simple control tasks at a very favourable entry-level price! Reliable, with extensive functionality, easy to operate. New: also suitable for use in battery production and with digital control via Modbus RTU – VPPE.

Compact, versatile, affordable
Compact design and ready to use in many applications and wherever an optimum cost-benefit ratio is important. The sturdy design, with its high degree of protection IP65 and high EMC resistance, goes far beyond the reliable Festo standard.

Ideal for many application areas
The VPPE is suitable for almost all industries and applications. It now also meets the requirements for battery cell production in accordance with CD0033: Cu/Ni/Zn-free with ducted exhaust air. A cost-conscious solution.

New, cost-effective bus interface
Up to 256 valves can be connected via Modbus RTU. The relevant address can be set via the display. The reliable system uses standardised M12 cables and a simple daisy chain for

connection.

Simple and reliable

VPPE has a clear menu, display shutdown, a pressure range setting and password protection against manipulation. It is compatible with common supply manifolds and works with digital control electronics, including 3 controller presets.



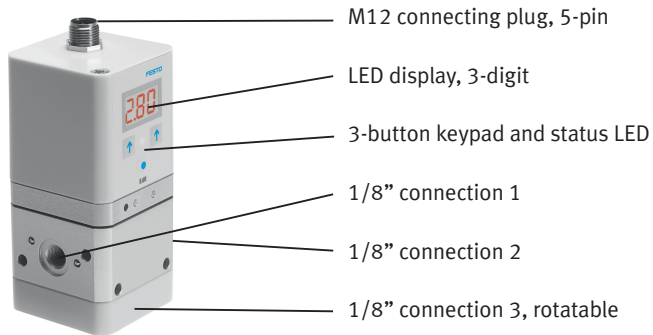
Additional information:

Product page

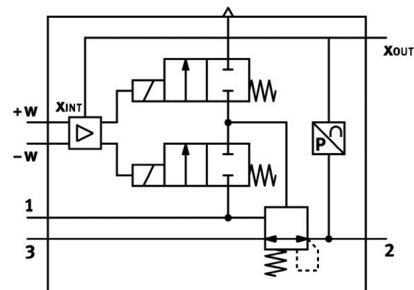
> www.festo.com/catalogue/vppe



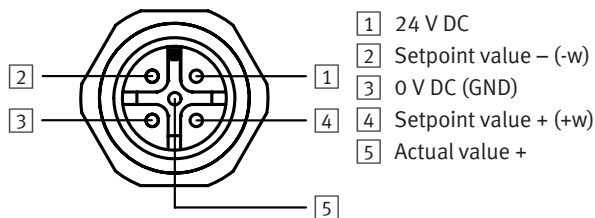
Description



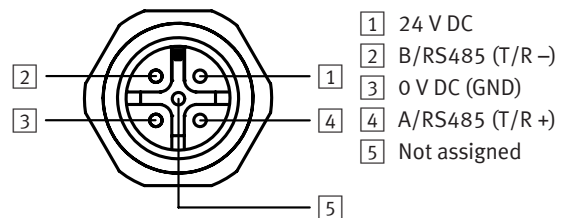
Functional principle



Pin allocation M12, 5-pin



Pin allocation for VPPE-...MR-...



Technical data

Type	VPPE-3-1-1/8-6-010-E1T	VPPE-3-1-1/8-...MR-...
Operating medium	Filtered, unlubricated air (40 µm)	Filtered, unlubricated air (40 µm)
Max. operating pressure p1	11 bar	11 bar
Output pressure p2	0.02 ... 2 bar, 0.06 ... 6 bar, 0.1 ... 10 bar	0.02 ... 2 bar, 0.06 ... 6 bar, 0.1 ... 10 bar
Flow rate	1250 nl/min at 6 bar referred to p1 = 10 bar	1250 nl/min at 6 bar referred to p1 = 10 bar
Nominal width	Pressurisation 5 mm, exhaust 2.5 mm	Pressurisation 5 mm, exhaust 2.5 mm
Electrical connection	M12 plug, 5-pin	M12 plug, 5-pin
Setpoint value	Analogue 0 ... 10 V and 4 ... 20 mA	Modbus RTU
Nominal current	0,05 A	0,05 A
Max. current	0,15 A	0,15 A
Duty cycle	100 %	100 %
Exhaust air	Not ducted Variant F1A: ducted exhaust air	Exhaust air (ducted)
Outer material	Cu-/Ni-/Zn-free according to CD0033	Cu-/Ni-/Zn-free according to CD0033