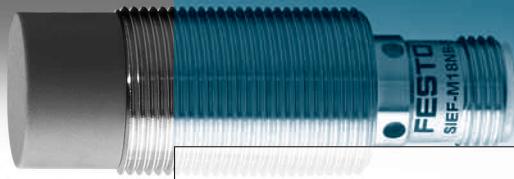


Factor 1 inductive proximity sensor SIEF

FESTO



Interference immune!

Factor 1 SIEF: A perfect combination of the latest features of inductive proximity sensors that results in the most reliable and easy-to-use sensor available to date.

Sensitive

Proximity sensors of type SIEF are characterised by an extremely long sensing distance.

Versatile

SIEF proximity sensors provide the same sensing range regardless of metal type. For example, with aluminium, the sensor's Factor 1 technology achieves an increased switching distance of up to 300 %.

Immune

SIEF proximity sensors do not have a magnetic core and are therefore unaffected by interference from strong magnetic fields (AC or DC), for example during electro-welding and in the vicinity

of lifts, smelting furnaces and similar equipment.

Temperature range

A temperature range from -30 to +85 °C offers satisfactory safety reserves, even at extremely low or high temperatures.

Fast

With its air-core coil, this type of sensor is almost 250 % faster than standard proximity sensors.

Excellent electromagnetic properties

All SIEF proximity sensors meet EMC requirements of the current standards EN 50082-2 and EN 61000-4-6.



Greater switching distance

High thermal resistance

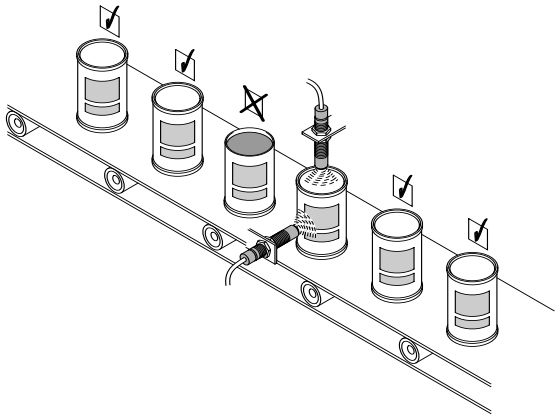
Faster thanks to air-coil core

317.4.PSI →

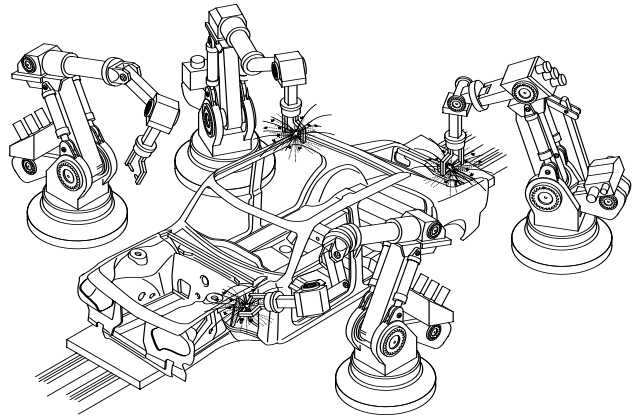
Product Short Information

Factor 1 inductive proximity sensor SIEF

Detection of metal cans and check for presence of lid



End-position monitoring for welding robots and automatic welding machines



Technical specifications	
Operating voltage	10 ... 30 V DC
Output current	Up to 200 mA
Switching frequency	Up to 3000 Hz
Output	N.O. contact
Mounting	Flush or non-flush
Protection against polarity reversal	Yes
Short circuit protection	Yes, pulsed
Protection class	IP67
Operating temperature	-30 ... +85 °C

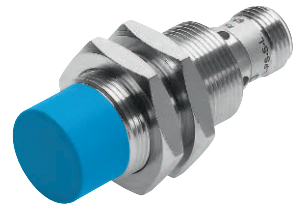
Features

- Sizes: M8 – M12 – M18 – M30
- Factor 1 for all metals
- Immune to magnetic fields
- Long sensing distances
- High switching frequency
- Wide operating temperature range
- High protection class: IP67

Areas of application

- Automotive industry: body welding
- Food industry: detection of stainless steel objects
- Transport and handling: Suitable for use when long sensing distances are required

Type	Housing	Size	Type of mounting	Sn [mm]	Output	
SIEF-M8NB-PS-S-L	Brass, chromium plated	M8	Non-flush fitting	4	PNP M8, 3-pin	
SIEF-M8NB-PS-K-L				4	PNP 2.5 m cable	
SIEF-M8B-PS-S-L			Flush fitting	1.5	PNP M8x1, 3-pin	
SIEF-M8B-PS-K-L				1.5	PNP cable – PUR	
SIEF-M12NB-PS-S-L			M12	Non-flush fitting	8	PNP M12, 3-pin
SIEF-M12NB-PS-K-L					8	PNP 2.5 m cable
SIEF-M12B-PS-S-L	Flush fitting	3		PNP M12x1, 3-pin		
SIEF-M12B-PS-K-L		3		PNP cable – PUR		
SIEF-M18NB-PS-S-L	M18	Non-flush fitting		12	PNP M12, 3-pin	
SIEF-M18NB-PS-K-L				12	PNP 2.5 m cable	
SIEF-M18B-PS-S-L		Flush fitting	5	PNP M12x1, 3-pin		
SIEF-M18B-PS-K-L			5	PNP cable – PUR		
SIEF-M30NB-PS-S-L		M30	Non-flush fitting	20	PNP M12, 3-pin	
SIEF-M30NB-PS-K-L				20	PNP 2.5 m cable	
SIEF-M30B-PS-S-L	Flush fitting		10	PNP M12x1, 3-pin		
SIEF-M30B-PS-K-L			10	PNP cable – PUR		
SIEF-M12B-PS-S-L-WA	Brass, PBT, PTFE-coated (welding applications)		M12	Flush fitting	3	PNP M12, 3-pin
SIEF-M12NB-PS-S-L-WA				Non-flush fitting	8	PNP M12, 3-pin
SIEF-M18B-PS-S-L-WA		M18	Flush fitting	5	PNP M12, 3-pin	
SIEF-M18NB-PS-S-L-WA			Non-flush fitting	12	PNP M12, 3-pin	
SIEF-M30B-PS-S-L-WA		M30	Flush fitting	10	PNP M12, 3-pin	
SIEF-M30NB-PS-S-L-WA			Non-flush fitting	20	PNP M12, 3-pin	



The table shows only the PNP versions – NPN versions are also available.

Festo AG & Co. KG

Ruiter Strasse 82
73734 Esslingen
www.festo.com
Tel. +49 711 347-0
Fax +49 711 347-2144
service_international@festo.com