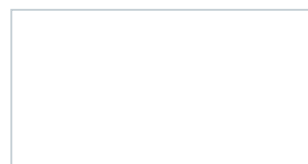
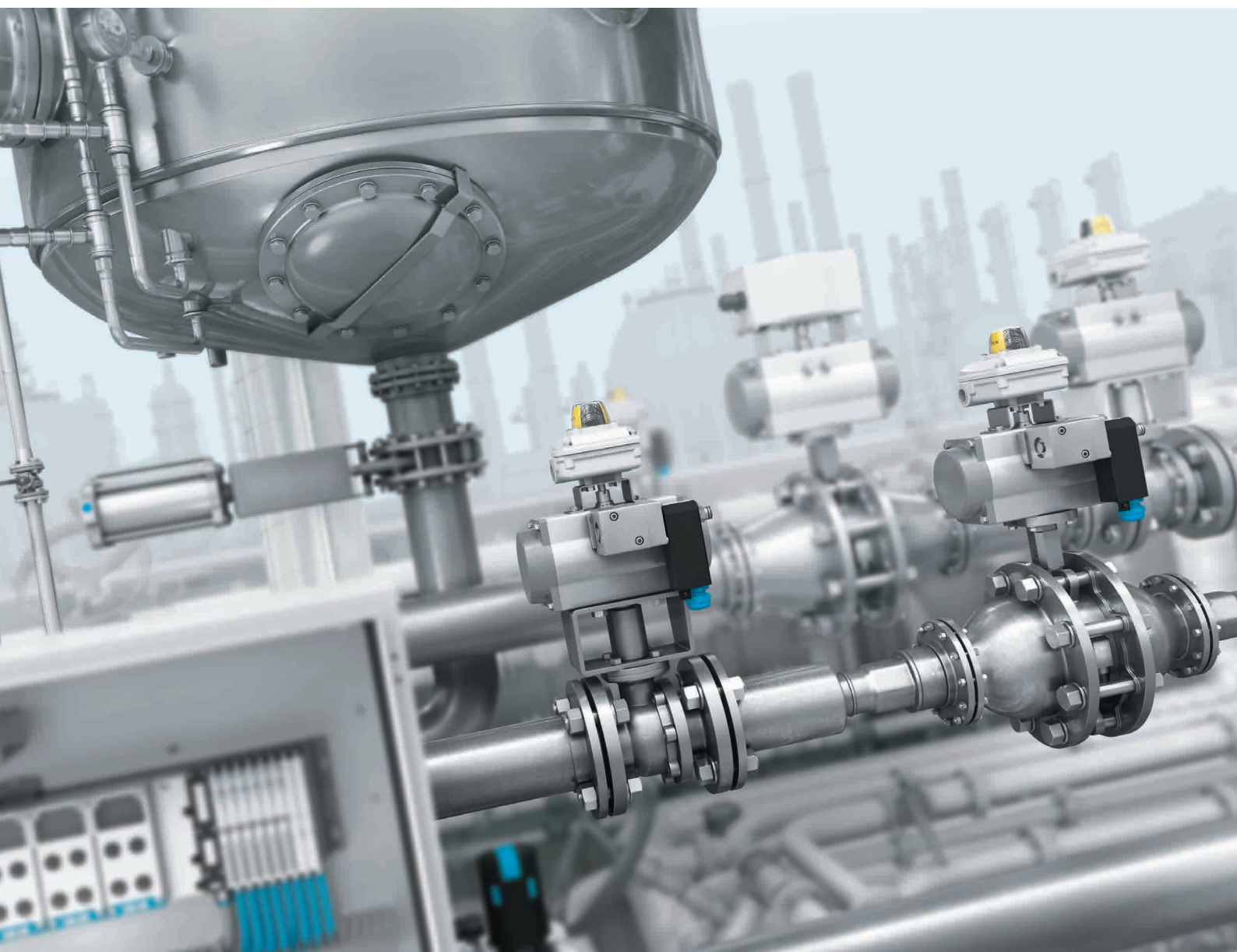
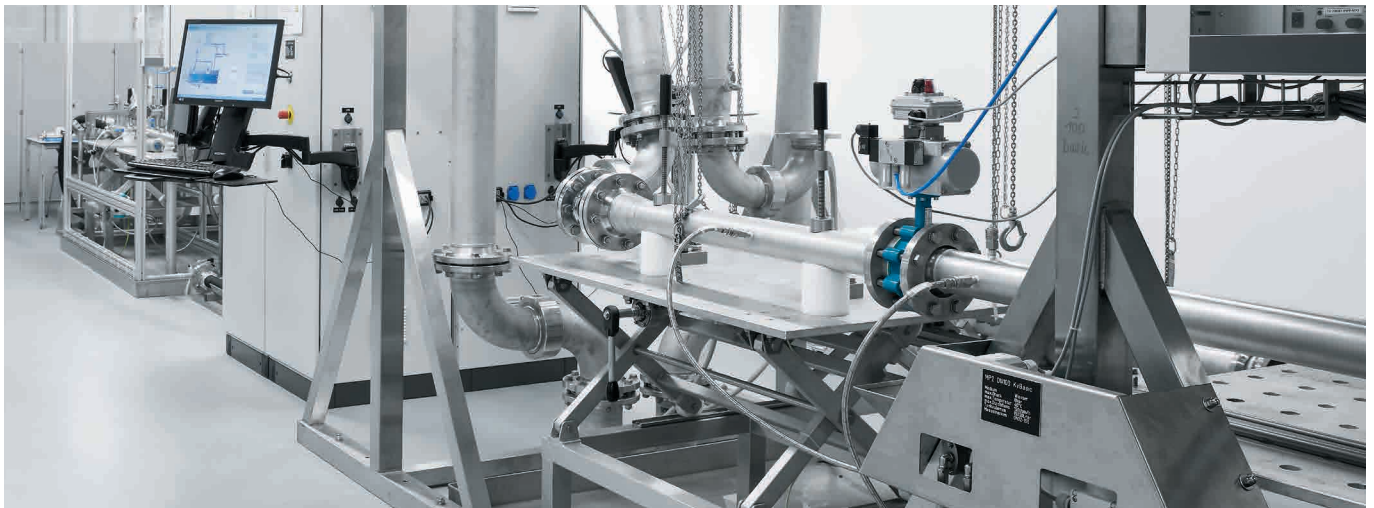


Automation for the requirements in the process industry

FESTO



Automation components for fluid control



Quarter turn actuator DFPD



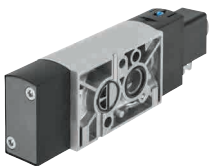
Standard rotation angles of 90° or 180°. High corrosion resistance through optional epoxy coating. Available as a high-temperature or low-temperature version.

Angle seat valves VZXA and VZXF



Sturdy stainless steel or brass angle seat valves in nominal widths up to DN50. The VZXF for standard applications or the VZXA as a modular design.

NAMUR valve VSNC



Festo NAMUR valves like the VSNC for standard applications. Single or double solenoid, with standard coil or with intrinsically safe explosion-proof design.

Pinch valve VZQA



The 2/2-way normally open or normally closed pinch valve VZQA in nominal widths up to DN25 is suitable for proportioning or filling even highly viscous media.

Sensor boxes SRBC/SRBE/SRBG



The right sensor box for the area of application. Weatherproof, cost-optimised and for potentially explosive areas.

2/2-way media valves (solenoid actuated)



VZWD, VZWM, VZWP, VZWF – solenoid media valves for the use of neutral, pure media. Pilot, servo or directly actuated.

Positioner CMSX



Electro-pneumatic positioner for proportional closed-loop control of flow rates at process valves. For double- or single-acting actuators.

Process valve assemblies



Selection of ball valves and butterfly valves for a wide variety of applications. Also available as pre-assembled units.