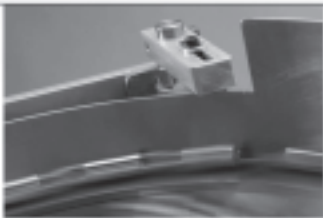


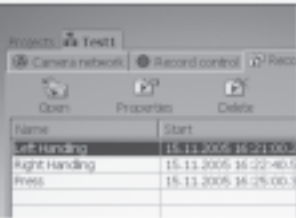
- Picture sampling rate  
185 ... 2,000 pictures per second
- Several cameras can be networked via  
Ethernet
- Recording and storage electronics  
integrated in the camera
- Compact dimensions,  
low weight
- Protection class IP65, 67

## Intelligent Compact Vision System SBOC-M/SBOI-M

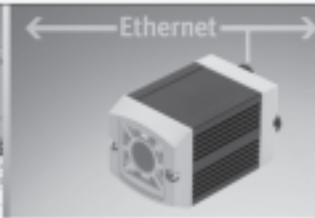
**Modern automation systems are for the most part designed for high production speeds which the human eye has trouble following.** Festo offers the intelligent Compact Vision System SBOC-M/SBOI-M as an innovative and low-cost alternative to conventional high-speed cameras, for diagnosis and commissioning as well as function monitoring of high-speed motion sequences.



High speed



Documentation



Networking

### **Impressive technology**

Compact design with integrated electronics for recording, storing, etc. motion sequences.

PC software for straightforward commissioning as well as visualisation and archiving of recorded sequences.

### **Impressive economy**

Simplified fault localisation thanks to reliable analysis and diagnosis of individual or cyclical high-speed motion sequences. Easy to handle with optimum adjustment and monitoring. It provides a highly cost-effective solution to many applications, from commissioning and servicing through to preventative maintenance.



- Integrated: complete evaluation electronics
- Sturdy: IP65/IP67 protection
- Networking and synchronisation: Ethernet interface
- High frame rate: 185 ... 2,000 fps

#### **Impressive productivity**

- Reduces the effort and costs involved in commissioning and maintenance
- Reliable processes with high cycle rates
- Functionality can be extended through software updates if necessary
- Straightforward commissioning via PC software
- Permits the archiving of any desired number of recordings

# Compact Vision System SBOC-M/SBOI-M

Key features

FESTO

## Problem description

Modern automation systems are for the most part designed for high production speeds which the human eye has trouble following.

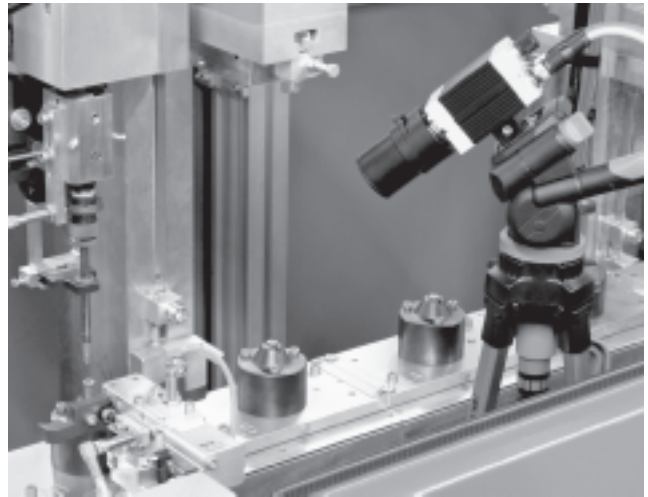
Disadvantage of this high speed: Fitters and service employees cannot detect errors in the motion sequence and their causes straight away.

It is also becoming increasingly difficult to set the system parameters to their optimum values.

## Typical applications

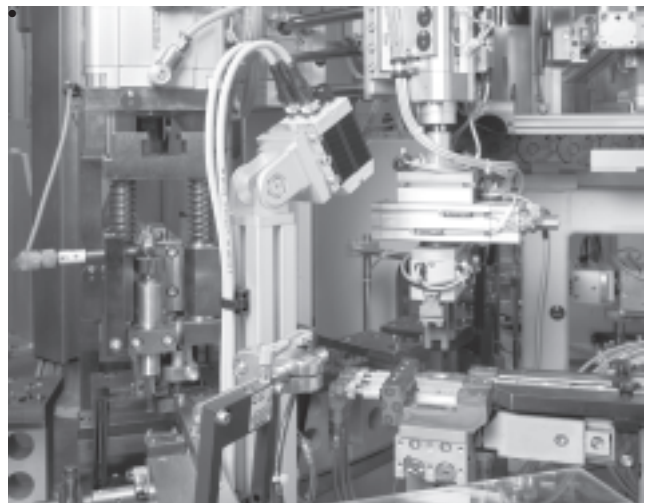
Mobile deployment of the high-speed camera for service and commissioning to increase the productivity and availability of automation systems

- Cycle time reduction through pinpointing of idle periods in motion sequences
- Optimum harmonisation of the travel times of individual axes in multi-axis systems, localisation of critical movements
- Time-synchronised visualisation of movement processes from several sides on a PC for greater ease of handling
- Localisation of unwanted vibrations which have a negative effect on the repetition accuracy of movement processes and can cause premature material fatigue

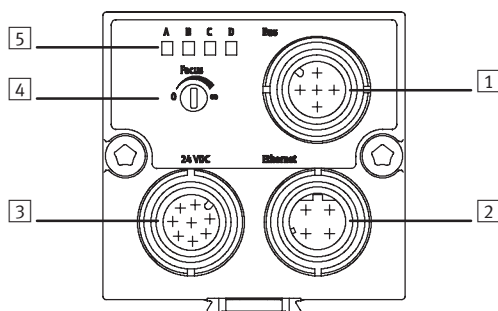


Stationary mounting of the high-speed camera to increase the availability of automation systems

- Continuous recording of processes in the ring buffer of the camera
- If a fault occurs, recording is stopped by an external signal. The case history of the fault is then stored in the camera, thus permitting an analysis of the cause



## Interfaces



- 1 Bus connection
- 2 Ethernet connection
- 3 Power supply and inputs/outputs
- 4 Adjusting screw for focus

- 5 Status LEDs:  
A Operating system  
B Ethernet traffic  
C Recording  
D Recording status

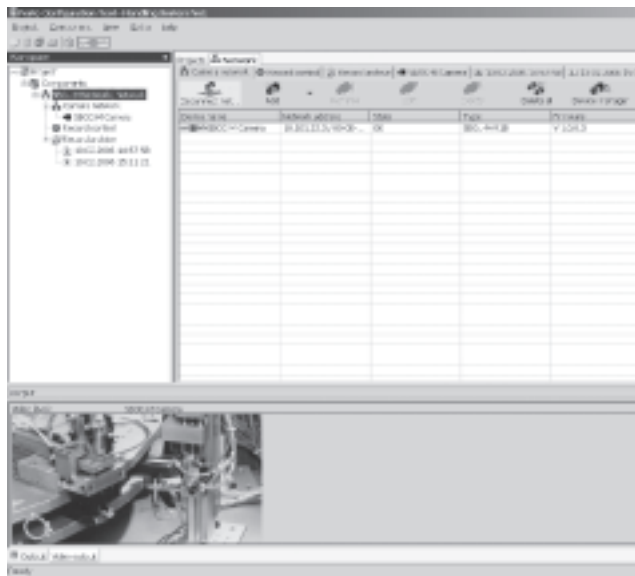
# Compact Vision System SBOC-M/SBOI-M

Key features

FESTO

## FCT software with SBO.. Network plug-in

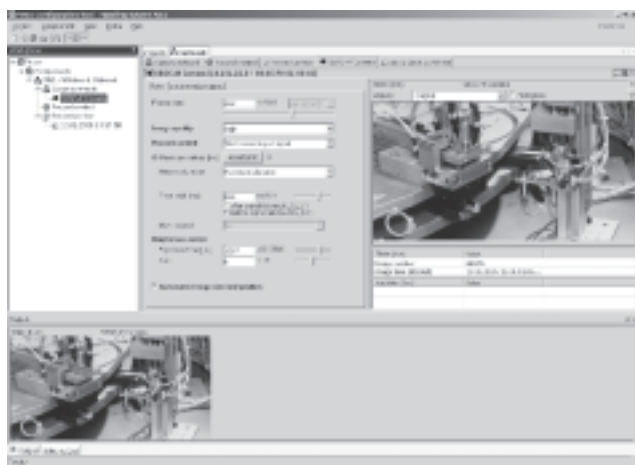
Configuring a camera network



The "SBO..-M Network" is a plug-in for the Festo configuration tool (FCT for short). It provides the following functions:

- Configuration and commissioning of a camera network with any desired number of Compact Vision Systems of the type SBOC-M or SBOI-M
- Creation of time-synchronised recordings using all devices in the camera network in order to record a scene from various angles, for example

## Setting the camera



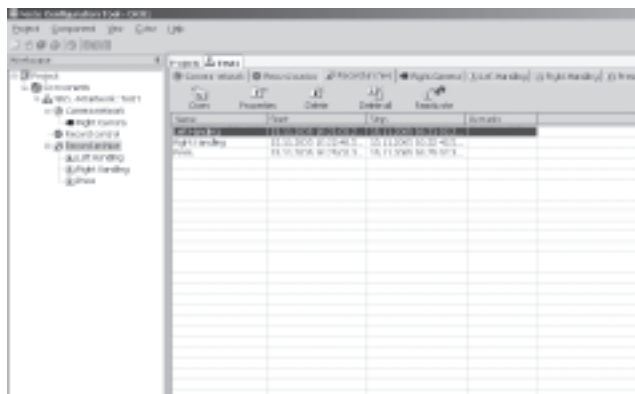
Using the live pictures from the camera, the lens can be set and parameters such as exposure time, frames per second, recording duration and picture quality, for example, adjusted.

With the parameters you can also define what is to happen when a trigger signal (edge change of an external 24 V signal) occurs:

- Start the recording
- Stop the recording
- Record only one picture

Time delays between trigger signal and start of recording or stop recording as well as recording several films or pictures in the camera memory (multi-recording) can also be determined in a user-friendly manner.

## Recording control



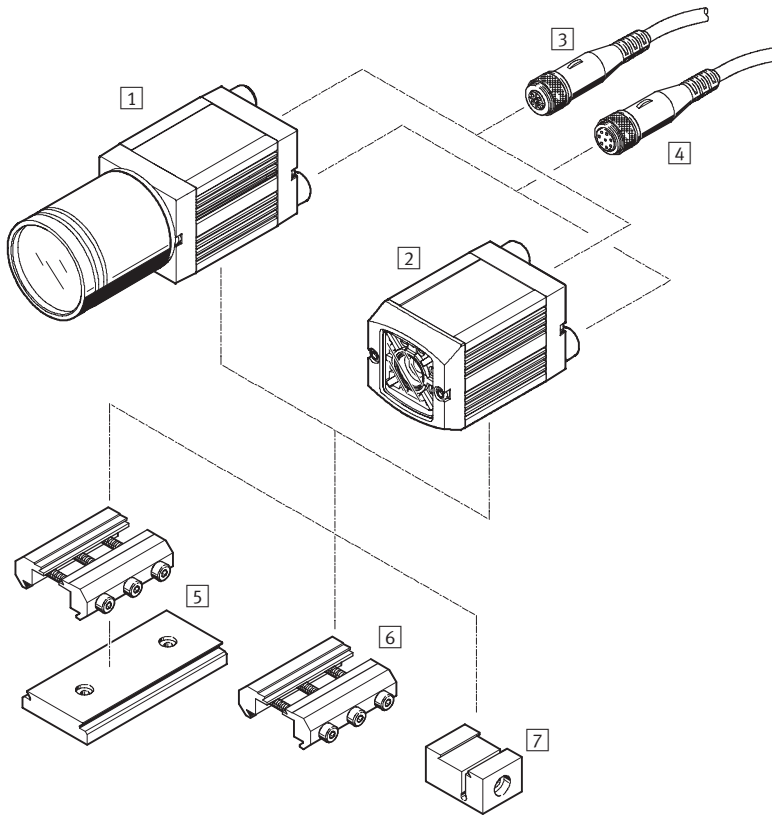
Recording can be started once the camera has been set up. You can choose whether the camera should wait for the occurrence of an external trigger condition, start recording directly following initialisation or store the pictures sent via Ethernet on a PC without buffering them in the camera. The PC can be removed once recording has been started in "Wait for trigger

signal" mode. The camera operates automatically and waits for the trigger condition to occur. Recorded sequences are stored in the internal memory of the respective camera and can be transmitted to the FCT software once a connection has been re-established with a PC. The sequences are archived and can be analysed on the PC.

# Compact Vision System SBOC-M/SBOI-M

Peripherals overview

FESTO



Accessories		Brief description	→ Page/Internet
Compact Vision System			
[1]	SBOC-M-R1B	For standard lens with C mount connection	8
[2]	SBOI-M-R1B	With integrated lens and light	
–	SBOA-M-SYSTAINER	Systainer with Compact Vision System SBOC-M-R1B and an extensive range of accessories	11
Cable with socket			
[3]	SBOA-K30E-M12S	Ethernet diagnostic cable	11
[4]	SIM-M12-8GD-....-PU	For supplying the operating voltage	
Lens			
–	SBOL-12	Focal distance 12 mm	11
–	SBOL-25	Focal distance 25 mm	
Mounting components			
[5]	Adapter kit SBOA-HMSV-39	With screw-on adapter plate	10
[6]	Adapter kit SBOA-HMSV-40	Without screw-on adapter plate	
[7]	Adapter kit SBOA-HMSV-41	With female thread G1¼ for mounting on commercially available tripods	
–	Adapter SBOL-C-5	5 mm spacer ring (CS mount to C mount)	11

# Compact Vision System SBOC-M/SBOI-M

Type codes




		SBO	C	-	M	-	R1B
Function							
SBO	Compact Vision System						
Design							
C	For standard lens with C mount connection						
I	Integrated lens						
Equipment							
M	With integrated application-specific software						
R1B	VGA resolution (640 x 480 pixels), monochrome						

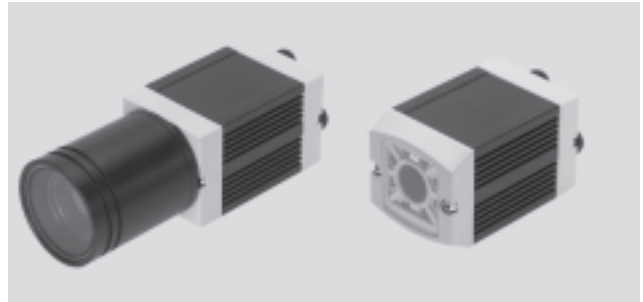
# Compact Vision System SBOC-M/SBOI-M

Technical data

**FESTO**

-  - Voltage  
24 V DC

-  - Temperature range  
-10 ... +50 °C



General technical data		
	SBOC-M	SBOI-M
Lens mounting	C mount	Integrated lens
Operating distance [mm]	Dependent on the lens selected	22 ... 1,000
Field of vision [mm]	Dependent on the lens selected	14x10 ... 520x390
Exposure time [ms]	0.04 ... 1,000	
Frame rate (full image) [fps]	185	
Sensor resolution [pixels]	640x480	
Sensor type	Monochrome	

Electrical data		
Nominal operating voltage [V DC]	24	
Permissible voltage fluctuations	±10%	
Max. residual current [A]	1.5 at the 24 V outputs	
Current consumption [mA]	120	
Bus connection	Ethernet interface IEEE802.3U (100BaseT) 100 Mbit/s TCP/IP M12	
Protection class	IP65/IP67	

Operating and environmental conditions		
Ambient temperature [°C]	-10 ... +50	
Storage temperature [°C]	-10 ... +60	
Ambient conditions	Screened from extreme external light sources Cleanest possible ambient air	

Materials	
Housing	Anodised aluminium
Cap	Acrylic butadiene styrene, glass fibre reinforced
Material note	Free of copper and PTFE

Weight [g]		
	SBOC-M	SBOI-M
Compact Vision System	182	184



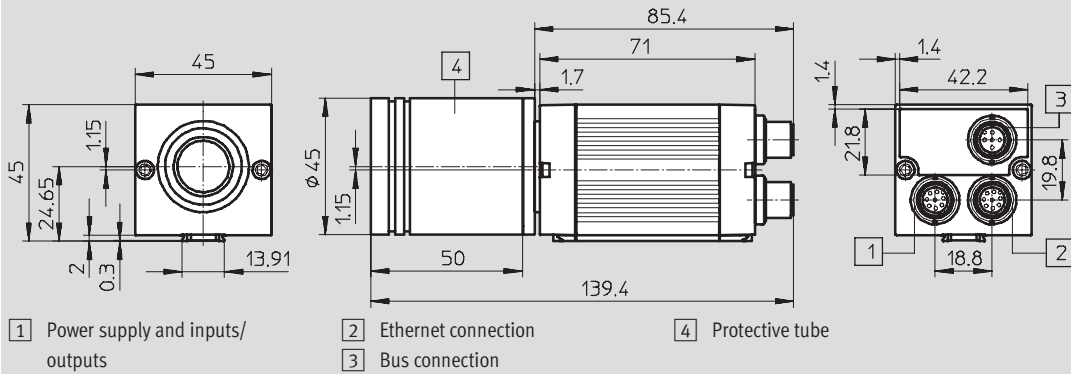
# Compact Vision System SBOC-M/SBOI-M

Technical data

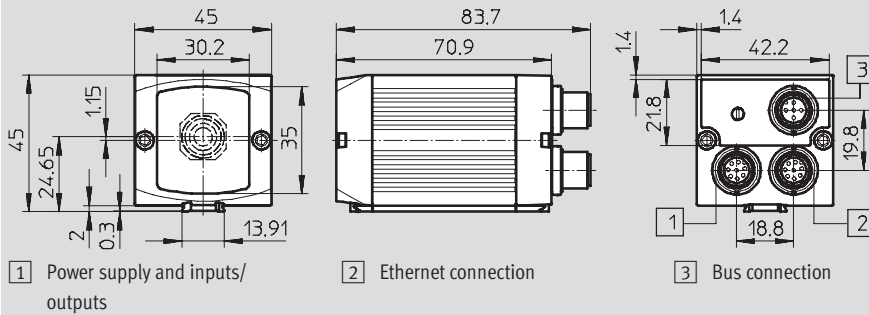
**FESTO**

## Dimensions

### SBOC-M



### SBOI-M



## Ordering data

Design	Part No.	Type
For standard lens with C mount connection	541 398	SBOC-M-R1B
Integrated lens	541 395	SBOI-M-R1B

# Compact Vision System SBOC-M/SBOI-M

Accessories

FESTO

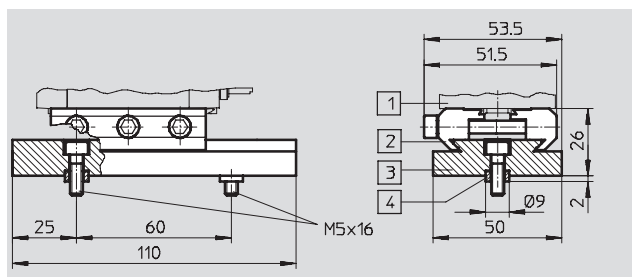
## Adapter kit

### SBOA-HMSV-39

with screw-on adapter plate

Material:

Wrought aluminium alloy, anodised



Ordering data		
	Part No.	Type
Adapter kit	541 599	SBOA-HMSV-39

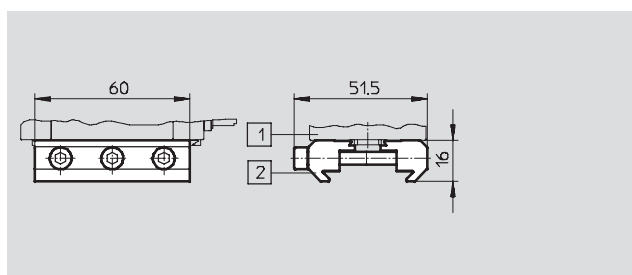
## Adapter kit

### SBOA-HMSV-40

without screw-on adapter plate

Material:

Wrought aluminium alloy, anodised



Ordering data		
	Part No.	Type
Adapter kit	541 600	SBOA-HMSV-40

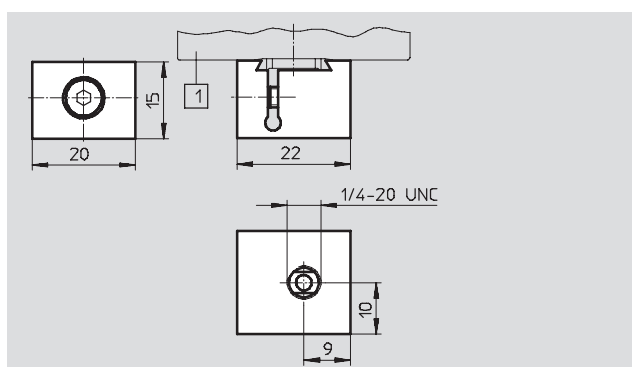
## Adapter kit

### SBOA-HMSV-41

with female thread G $\frac{1}{4}$  for mounting on commercially available tripods

Material:

Wrought aluminium alloy, anodised



Ordering data		
	Part No.	Type
Adapter kit	542 140	SBOA-HMSV-41

## Compact Vision System SBOC-M/SBOI-M

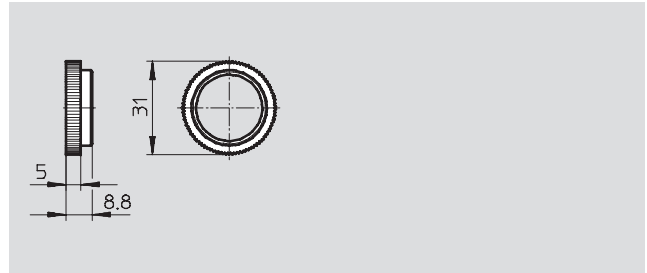
Accessories

**FESTO**

### Adapter SBOL-C-5

5 mm spacer ring  
(CS mount to C mount)

Material:  
Wrought aluminium alloy, anodised



Ordering data		
	Part No.	Type
Adapter	541 601	SBOL-C-5

### Systainer with Compact Vision System SBOA-M-SYSTAINER

- Camera SBOC-M-R1B
- Mounting kit for tripod
- Zoom lens (10 – 40 mm)
- Plug-type power supply unit incl. trigger button
- Extension cable for triggering button
- Manual cable drum
- M12 to RJ45 Ethernet cable
- Ethernet crossover patch cable
- RJ45 coupling
- 1,000 W light
- 2 tripods (one each for camera and light)
- FCT configuration software
- Documentation package



Ordering data		
	Part No.	Type
Systainer with Compact Vision System SBOC-M-R1B and accessories	543 408	SBOA-M-SYSTAINER

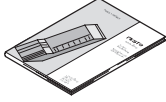


Ordering data – Lens				
	Brief description	Focal distance [mm]	Part No.	Type
	C mount with fixed focal distance	12	549 132	SBOL-12
		25	549 133	SBOL-25

Ordering data – Cables M12x1					Technical data → Internet: sim, soba	
	Assembly	Use	Connection	Cable length [m]	Part No.	Type
Straight socket						
	Union nut M12x1	Operating voltage supply	8-pin	2	525 616	SIM-M12-8GD-2-PU
				5	525 618	SIM-M12-8GD-5-PU
	Union nut M12x1	Ethernet diagnostic cable	4-pin, d-coded	3	542 139	SBOA-K30E-M12S

# Compact Vision System SBOC-M/SBOI-M

Accessories

**FESTO**

Ordering data – Documentation				
	Brief description	Language	Part No.	Type
	Description User documentation in paper form is not included in the scope of delivery of the camera system.	German	<b>542 122</b>	<b>P.BE-SBO-M-DE</b>
		English	<b>542 123</b>	<b>P.BE-SBO-M-EN</b>
	Documentation package The user documentation on CD-ROM is included in the scope of delivery of the Compact Vision System.	German English	<b>542 121</b>	<b>P.BE-SBO-M-UDOK</b>
	Configuration software The FCT (Festo configuration tool) configuration software on CD-ROM is included in the scope of delivery of the Compact Vision System.	German English French	<b>539 622</b>	<b>P.SW-FCT</b>

# Product Range and Company Overview

## A Complete Suite of Automation Services

Our experienced engineers provide complete support at every stage of your development process, including: conceptualization, analysis, engineering, design, assembly, documentation, validation, and production.



### Custom Automation Components

Complete custom engineered solutions



### Custom Control Cabinets

Comprehensive engineering support and on-site services



### Complete Systems

Shipment, stocking and storage services

## The Broadest Range of Automation Components

With a comprehensive line of more than 30,000 automation components, Festo is capable of solving the most complex automation requirements.



### Electromechanical

Electromechanical actuators, motors, controllers & drives



### Pneumatics

Pneumatic linear and rotary actuators, valves, and air supply



### PLCs and I/O Devices

PLC's, operator interfaces, sensors and I/O devices

## Supporting Advanced Automation... As No One Else Can!

Festo is a leading global manufacturer of pneumatic and electromechanical systems, components and controls for industrial automation, with more than 12,000 employees in 56 national headquarters serving more than 180 countries. For more than 80 years, Festo has continuously elevated the state of manufacturing with innovations and optimized motion control solutions that deliver higher performing, more profitable automated manufacturing and processing equipment. Our dedication to the advancement of automation extends beyond technology to the education and development of current and future automation and robotics designers with simulation tools, teaching programs, and on-site services.

## Quality Assurance, ISO 9001 and ISO 14001 Certifications

Festo Corporation is committed to supply all Festo products and services that will meet or exceed our customers' requirements in product quality, delivery, customer service and satisfaction.

To meet this commitment, we strive to ensure a consistent, integrated, and systematic approach to management that will meet or exceed the requirements of the ISO 9001 standard for Quality Management and the ISO 14001 standard for Environmental Management.



© Copyright 2008, Festo Corporation. While every effort is made to ensure that all dimensions and specifications are correct, Festo cannot guarantee that publications are completely free of any error, in particular typing or printing errors. Accordingly, Festo cannot be held responsible for the same. For Liability and Warranty conditions, refer to our "Terms and Conditions of Sale", available from your local Festo office. All rights reserved. No part of this publication may be reproduced, distributed, or transmitted in any form or by any means, electronic, mechanical, photocopying or otherwise, without the prior written permission of Festo. All technical data subject to change according to technical update.



Printed on recycled paper at New Horizon Graphic, Inc., FSC certified as an environmentally friendly printing plant.

# Festo North America

## United States

### Customer Resource Center

502 Earth City Expy., Suite 125  
Earth City, MO 63045

For ordering assistance, or to find  
your nearest Festo Distributor,

**Call:** 1.800.99.FESTO

**Fax:** 1.800.96.FESTO

**Email:** [customer.service@us.festo.com](mailto:customer.service@us.festo.com)

For technical support,

**Call:** 1.866.GO.FESTO

**Fax:** 1.800.96.FESTO

**Email:** [product.support@us.festo.com](mailto:product.support@us.festo.com)

### Headquarters

Festo Corporation  
395 Moreland Road  
P.O. Box 18023  
Hauppauge, NY 11788  
[www.festo.com/us](http://www.festo.com/us)

### Sales Offices

#### Appleton

N. 922 Tower View Drive, Suite N  
Greenville, WI 54942

#### Boston

120 Presidential Way, Suite 330  
Woburn, MA 01801

#### Chicago

1441 East Business Center Drive  
Mt. Prospect, IL 60056

#### Dallas

1825 Lakeway Drive, Suite 600  
Lewisville, TX 75057

#### Detroit - Automotive Engineering Center

2601 Cambridge Court, Suite 320  
Auburn Hills, MI 48326

#### New York

395 Moreland Road  
Hauppauge, NY 11788

#### Silicon Valley

4935 Southfront Road, Suite F  
Livermore, CA 94550

## Design and Manufacturing Operations



**East:** 395 Moreland Road, Hauppauge, NY 11788



**Central:** 1441 East Business Center Drive, Mt. Prospect, IL 60056



**West:** 4935 Southfront Road, Suite F, Livermore, CA 94550

## Mexico

### Headquarters

Festo Pneumatic, S.A.  
Av. Ceylán 3, Col. Tequesquahuac  
54020 Tlalnepantla, Edo. de México  
Call: 011 52 [55] 53 21 66 00  
Fax: 011 52 [55] 53 21 66 65  
Email: [festo.mexico@mx.festo.com](mailto:festo.mexico@mx.festo.com)  
[www.festo.com/mx](http://www.festo.com/mx)



## Canada

### Headquarters

Festo Inc.  
5300 Explorer Drive  
Mississauga, Ontario L4W 5G4  
Call: 1.905.624.9000  
Fax: 1.905.624.9001  
Email: [info.ca@ca.festo.com](mailto:info.ca@ca.festo.com)  
[www.festo.com/ca](http://www.festo.com/ca)



## Festo Worldwide

Argentina Australia Austria Belarus Belgium Brazil Bulgaria Canada Chile China Colombia Croatia Czech Republic Denmark  
Estonia Finland France Germany Great Britain Greece Hong Kong Hungary India Indonesia Iran Ireland Israel Italy Japan  
Latvia Lithuania Malaysia Mexico Netherlands New Zealand Norway Peru Philippines Poland Romania Russia Serbia Singapore  
Slovakia Slovenia South Africa South Korea Spain Sweden Switzerland Taiwan Thailand Turkey Ukraine United States Venezuela

[www.festo.com](http://www.festo.com)