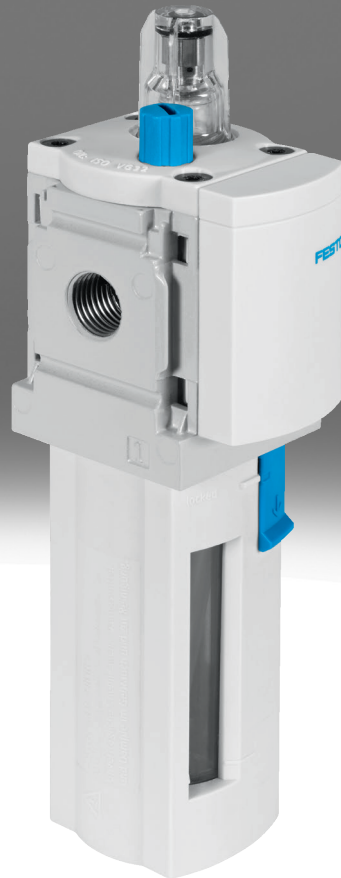


Lubricator MS6-LOE

FESTO



Characteristics

At a glance

Very compact series for use close to the process directly on the machine

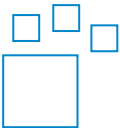
- Grid dimension: 62 mm
- Proportional lubricator with precision oil dosing
- Reduces wear on drive units subject to high loads
- High flow rate performance
- Quick and easy oil top-up even during operation (under pressure)

The following oils are recommended for Festo components (viscosity range to ISO 3448, ISO class VG 32, 32 mm²/s (= cSt) at 40 °C):

- Festo special oil OFSW-32 (see accessories)
- Castrol HySpin ZZ 32
- BP Energol HLP 32
- Mobil Nuto H 32
- Mobil DTE 24
- Shell Tellus S2 MA 32

Ordering data - modular system

Link [ms6-loe](#)



Configurable product

This product and all its product options can be ordered online via the configurator.

Diagrams

Link [ms6-loe](#)



The diagrams shown in this document are also available online. These can be used to display precise values.

Function

The proportional lubricator adds a precisely adjustable amount of oil to the compressed air. The pressure drop that occurs when air flows through a Venturi nozzle is used to feed oil from a reservoir to the drip cap. From there, the oil drips into the air duct directly behind the proportional valve, where it is atomised. The amount of oil mist is proportional to the compressed air flow rate.

Pneumatic connection

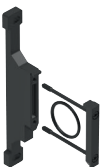
Bowl type

Bowl guard can be selected either as a plastic bowl guard or integrated as a metal bowl guard.

Type of mounting

[WP]

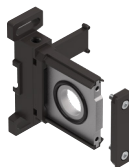
Mounting bracket basic design



- For connecting the modules for wall mounting
- In combination with connecting plate MS6-AG... for mounting an individual device on a wall
- In combination with mounting plate MS6-AEND for wall mounting of a single device
- Same wall distance for mixing combination with MS4 and MS6 series

[WPM]

Mounting bracket for hooking in service unit components



- Mounting attachment and connector for service unit combination
- Mount and dismount the service unit combination quickly
- Spacer for maintaining the mounting gap

Characteristics

[WB] Mounting centrally at rear (wall mounting top and bottom), connecting plates not required



- For wall mounting an individual device

EU certification

Optional device variant EX4 for use in potentially explosive areas of zones 1, 2, 21 and 22

UL certification

Optional device variant UL1, which meets the safety requirements for the Canadian and US markets.

Flow direction

Available with flow in the opposite direction.

Type code

001	Series
MS	MS series
002	Size
6	Grid dimension 62 mm
003	Function
LOE	Compressed air lubricator
004	Pneumatic connection
1/4	Female thread G1/4
3/8	Female thread G3/8
1/2	Female thread G1/2
AGB	Sub-base G1/4
AGC	Sub-base G3/8
AGD	Sub-base G1/2
AGE	Sub-base G3/4
AGF	Sub-base G1
AQN	Sub-base 1/4 NPT
AQP	Sub-base 3/8 NPT
AQR	Sub-base 1/2 NPT
AQS	Sub-base 3/4 NPT

005	Bowl type
R	Plastic tray with plastic basket
U	Aluminium
006	Type of mounting
	Without mounting bracket
WB	Mounting centrally at rear (wall mounting top and bottom), connecting plates not required
WP	Mounting bracket basic design
WPM	Mounting bracket for hooking in service unit components
007	EU certification
	None
EX4	II 2GD
008	UL certification
	None
UL1	cULus ordinary location for Canada and USA
009	Flow direction
	Flow direction from left to right
Z	Flow direction from right to left

Datasheet

General technical data



Pneumatic connection, port 1	G1/4		G3/8		G1/2		G3/4	G1
Bowl type	Plastic tray with plastic basket	Aluminium	Plastic tray with plastic basket	Aluminium	Plastic tray with plastic basket	Aluminium	Plastic tray with plastic basket	
Pneumatic connection, port 2	G1/4		G3/8		G1/2		G3/4	G1
Design	Proportional standard mist lubricator							
Type of mounting	Either: In-line installation With accessories							
Mounting position	Vertical +/-5°							
Min. flow rate for lubricator function	50 l/min							
Max. oil capacity	75 cm ³	80 cm ³	75 cm ³	80 cm ³	75 cm ³	80 cm ³	75 cm ³	

Standard nominal flow rate q_n

Pneumatic connection, port 1	G1/4	G3/8	G1/2	G3/4	G1
Standard nominal flow rate (standardised to DIN 1343) ¹⁾	2,500 l/min	5,300 l/min	7,200 l/min		

1) in main flow direction 1->2

Operating and environmental conditions

Operating pressure	0.1 ... 1.6 MPa
Operating pressure ¹⁾	1 ... 16 bar
Operating pressure	14.5 ... 232 psi
Operating medium	Compressed air to ISO 8573-1:2010 [7:4:4] Inert gases
Note on operating and pilot medium	Lubricated operation possible
Ambient temperature	-10 ... 60°C
Media temperature	-10 ... 60°C
Storage temperature	-10 ... 60°C
UL certification ²⁾	None, cULus ordinary location for Canada and USA
Corrosion resistance class CRC ³⁾	2 - Moderate corrosion stress

1) With certification UL: 1 ... 10 bar

2) More information www.festo.com/catalogue/ms6-loe → Support/Downloads.

3) More information www.festo.com/x/topic/crc

ATEX

ATEX category gas	II 2G
Explosion ignition protection type for gas	Ex h IIC T6 Gb X
ATEX category dust	II 2D
Explosion ignition protection type for dust	Ex h IIIC T60°C Db X
Explosion ambient temperature	-10°C ≤ Ta ≤ +60°C
Explosion protection certification outside the EU	EPL Db (GB) EPL Gb (GB)
CE mark (see declaration of conformity) ¹⁾	To EU Explosion Protection Directive (ATEX)
UKCA marking (see declaration of conformity) ²⁾	To UK EX instructions

1) More information www.festo.com/catalogue/ms6-loe → Support/Downloads.

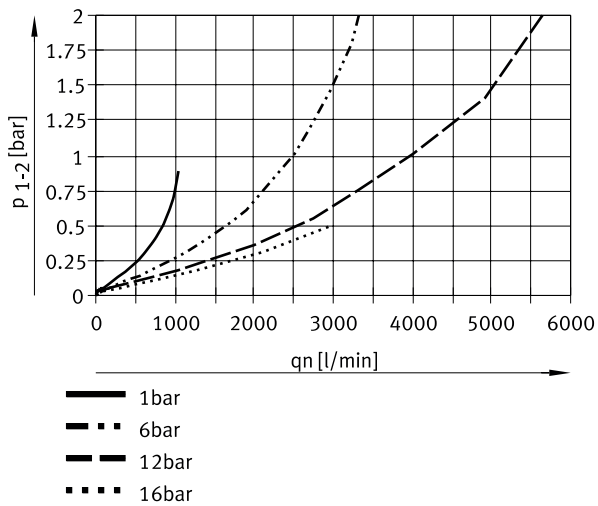
2) More information www.festo.com/catalogue/ms6-loe → Support/Downloads.

Datasheet

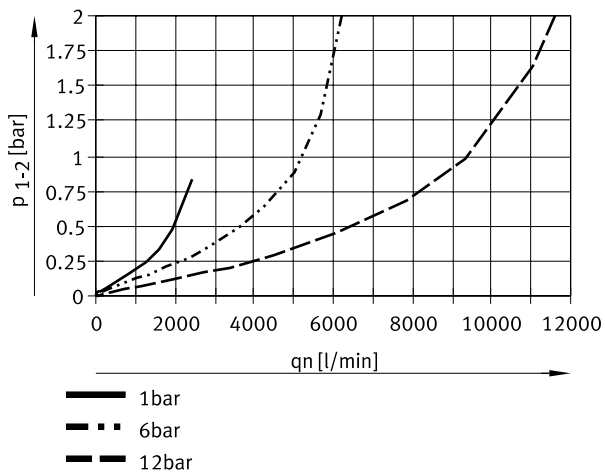
Materials

Bowl type	Plastic tray with plastic basket	Aluminium
Material housing	Die-cast aluminium	
Material bowl	PC	Wrought aluminium alloy
Note on materials	RoHS-compliant	
LABS (PWIS) conformity	VDMA24364-B1/B2-L	

Standard flow rate q_n as a function of differential pressure p_{1-2} (MS6-LOE-1/4)

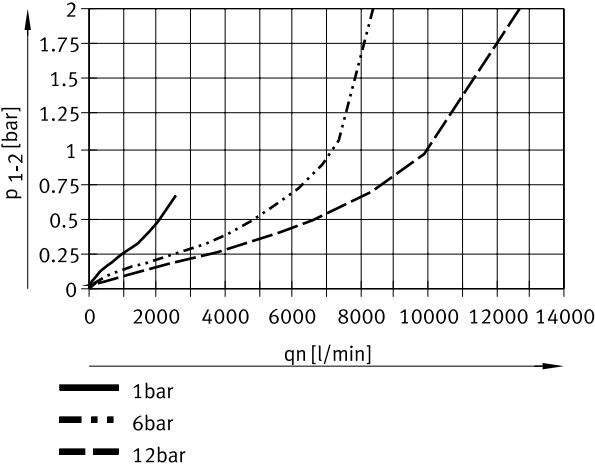


Standard flow rate q_n as a function of differential pressure p_{1-2} (MS4-LOE-3/8)



Datasheet

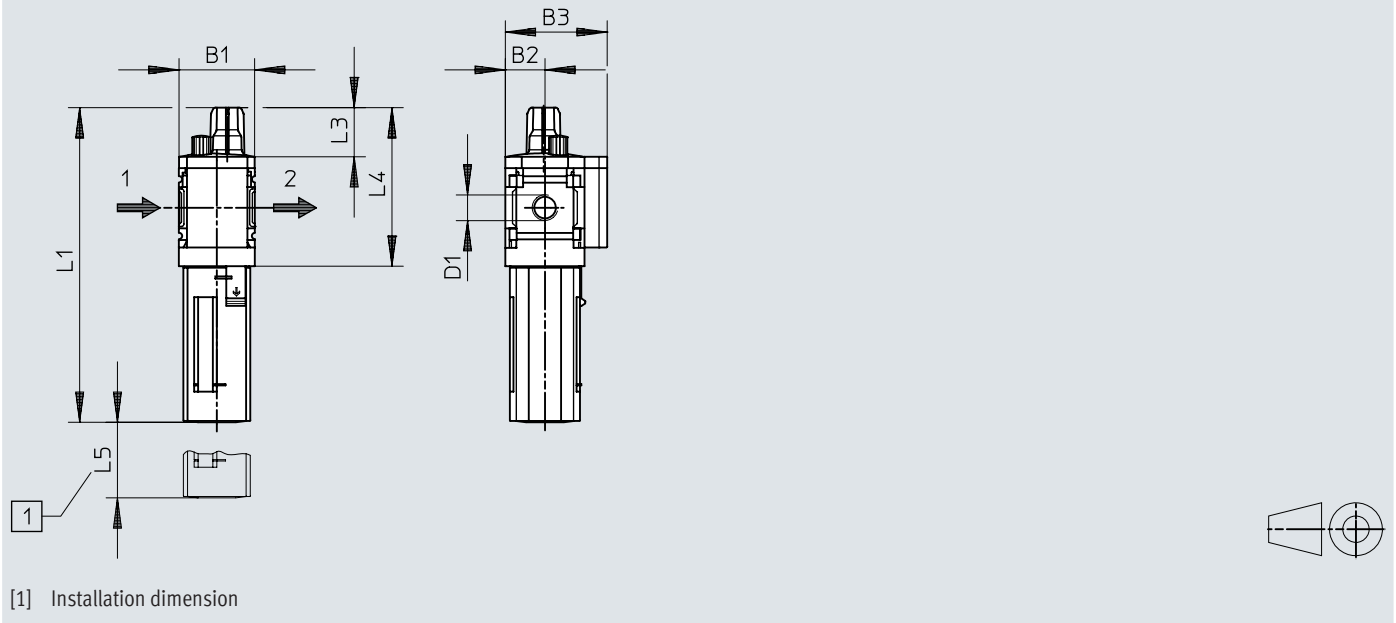
Standard flow rate q_n as a function of differential pressure p_{1-2} (MS6-LOE-1/2)



Dimensions

Dimensions – Basic type


Download CAD data www.festo.com



	B1	B2	B3	D1	L1		L2	L3	L4	L5
					1)	2)				
MS6-LOE-1/4	62	31	76	G1/4	218	223	66	27	112	130
MS6-LOE-3/8				G3/8						
MS6-LOE-1/2				G1/2						

- 1) Bowl guard, polymer
- 2) Bowl guard, metal

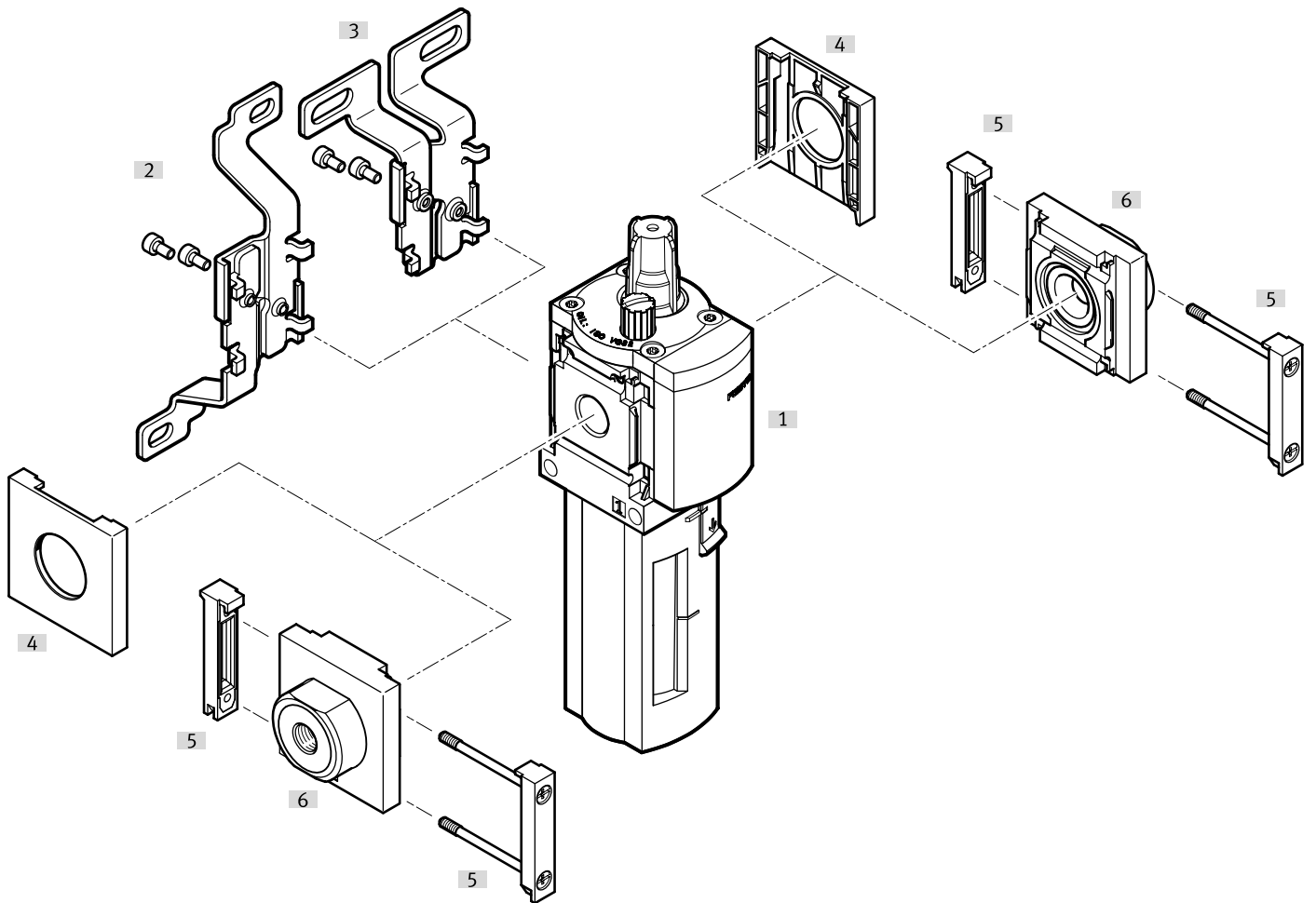
Ordering data

Ordering data						
	Pneumatic connection, port 1	Bowl type	Flow direction	Product weight	Part no.	Type
	G1/4	Plastic tray with plastic basket	Flow direction from left to right	600 g	529779	MS6-LOE-1/4-R
		Aluminium		810 g	529781	MS6-LOE-1/4-U
	G3/8	Plastic tray with plastic basket		600 g	529783	MS6-LOE-3/8-R
		Aluminium		810 g	529785	MS6-LOE-3/8-U
	G1/2	Plastic tray with plastic basket	Flow direction from right to left	600 g	529775	MS6-LOE-1/2-R
			529776		MS6-LOE-1/2-R-Z	
		Aluminium	Flow direction from left to right	810 g	529777	MS6-LOE-1/2-U
	G3/4	Plastic tray with plastic basket		900 g	8232972	MS6-LOE-AGE-R
	G1				8232973	MS6-LOE-AGF-R

Ordering data – Modular product system			
	Short type code	Part no.	Type
	MS6-LOE	527674	MS6-LOE


Peripherals


Peripherals overview




Accessories			→ Link
Type/order code	Description		
[1] Lubricator MS6-LOE			ms6-loe
[2] Mounting bracket MS6-WB	For individual device		11
[3] Cover cap MS6-END	For devices without connecting plate		11
[4] Module connector MS6-MV1	For device combinations and individual devices with connecting plate		11
[5] Connecting plate SET MS6-AG...	For device combinations		11


Accessories

Module connector MS6-MV1				
	Size	Product weight	Part no.	Type
	6	33 g	8119204	MS6-MV1


Mounting bracket MS6-WP...				
	Size	Product weight	Part no.	Type
	6	76 g	532195	MS6-WP
			541544	MS6-WP-EX
		115 g	526074	MS6-WPB
			541542	MS6-WPB-EX
		144 g	526073	MS6-WPM-D
	154 g	532186	MS6-WPM-2D	


Mounting bracket MS6-WB				
	Size	Product weight	Part no.	Type
	6	121 g	532196	MS6-WB

Cover cap MS6-END				
	Size		Part no.	Type
	6		538780	MS6-END

Connecting plate-SET MS6-AG...					
	Size	Pneumatic connection, port 1	Product weight	Part no.	Type
	6	G1/4	300 g	526080	MS6-AGB

Accessories

Connecting plate-SET MS6-AG...					
	Size	Pneumatic connection, port 1	Product weight	Part no.	Type
	6	G1/4	300 g	541538	MS6-AGB-EX
		G3/8		526081	MS6-AGC
		G1/2		541539	MS6-AGC-EX
		G3/4		526082	MS6-AGD
		G1		541540	MS6-AGD-EX
				526083	MS6-AGE
		541541	MS6-AGE-EX		
			8212070	MS6-AGF	

Special oil OFSW (1 litre)			
	Short type code	Part no.	Type
	OFSW	152811	OFSW-32