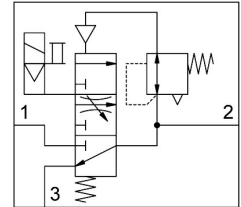


Soft-start/quick exhaust valve MS4-EDE-1/4-V24-AD7-B

Part number: 8201356

FESTO



General operating condition

Data sheet

| Feature | Value |
|--|--|
| Size | 4 |
| Grid dimension | 40 mm |
| Exhaust-air function | Cannot be throttled |
| Type of actuation | Electrical |
| Mounting position | Any |
| Selection of additional functions | With silencer |
| Series | MS |
| Manual override | Detenting Non-detenting |
| Design | Poppet valve, electrically actuated |
| Type of reset | Mechanical spring |
| Type of piloting | Piloted |
| Pilot air supply | Internal |
| Symbol | 00997398 |
| Valve function | 3/2-way, single solenoid, closed |
| lap | Underlap |
| Pressure gauge (ANALOG) or Pressure display (DIGITAL) | With pressure sensor with LCD display |
| Switching position indicator | With accessories |
| Operating pressure | 0.3 MPa ... 0.7 MPa |
| Operating pressure | 3 bar ... 7 bar |
| b value | 0.45 |
| C value | 8.52 l/sbar |
| Standard nominal flow rate, exhaust 0.6->0 MPa (6->0 bar, 87->0 psi) | 1600 l/min |
| Standard nominal flow rate (standardised to DIN 1343) | 2000 l/min |
| Switch-on time | 31 ms |
| Characteristic coil data | 24 V DC: 2.3 W |
| Permissible voltage fluctuations | +/-10% |
| Operating medium | Compressed air to ISO 8573-1:2010 [7:4:4] |
| Note on operating and pilot medium | Lubricated operation possible (in which case lubricated operation will always be required) |
| Corrosion resistance class CRC | 1 - Low corrosion stress |
| LABS (PWIS) conformity | VDMA24364-B1/B2-L |
| Cleanroom suitability, measured according to ISO 14644-14 | Class 7 according to ISO 14644-1 |
| Storage temperature | -10 °C ... 60 °C |

| Feature | Value |
|------------------------------|----------------------------|
| Media temperature | 0 °C ... 50 °C |
| Degree of protection | IP65 |
| Ambient temperature | 0 °C ... 50 °C |
| Product weight | 196 g |
| Electrical connection | Type C To EN 175301-803 |
| Signal status display | With accessories |
| Type of mounting | Via wall/surface bracket |
| Pneumatic connection, port 1 | G1/4 |
| Pneumatic connection, port 2 | G1/4 |
| Pneumatic connection, port 3 | G1/4 |
| Note on materials | RoHS compliant |
| Material seals | HNBR NBR |
| Material housing | Reinforced PA |