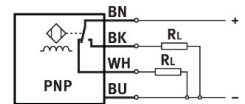
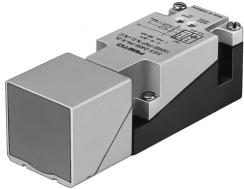


Proximity sensor SIES-Q40B-PA-X-2L

Part number: 150492

FESTO



[PDF](#) General operating condition

Data sheet

| Feature | Value |
|--|---|
| Conforms to standard | EN 60947-5-2 |
| Symbol | 00991612 |
| Approval | RCM c UL us - Listed (Oil) |
| CE mark (see declaration of conformity) | To EU EMC Directive |
| Rated operating distance | 15 mm |
| Assured operating distance | 12.2 mm |
| Reduction factors | Aluminium = 0.3 Stainless steel St 18/8 = 0.7 Copper = 0.25 Brass = 0.3 Steel St 37 = 1.0 |
| Ambient temperature | -25 °C ... 85 °C |
| Repetition accuracy | 0.75 mm |
| Switching output | PNP |
| Switching element function | Antivalent |
| Max. switching frequency | 100 Hz |
| Max. switching frequency DC | 100 Hz |
| Max. output current as a function of temperature | 200 mA at ≤ 50 °C 150 mA at ≤ 85 °C |
| Voltage drop | 3.5 V |
| Short circuit current rating | Pulsed |
| Operational voltage range DC | 10 V ... 30 V |
| Residual ripple | 10% |
| No-load supply current | ≤ 40 mA |
| Reverse polarity protection | For all electrical connections |
| Electrical connection | Screw terminal |
| Material connector housing | Process automation PBT |
| Cable fitting | M20x1.5 |
| Permissible cable diameter | 7.5 mm ... 12.5 mm |
| Size | 40x40x120 mm |
| Type of mounting | With through-hole |
| Mounting type | Flush |
| Product weight | 230 g |
| Material housing | PET |
| Ready status indication | Green LED |
| Switching status indication | Yellow LED |

| Feature | Value |
|---|----------------|
| Degree of protection | IP65 |
| LABS (PWIS) conformity | VDMA24364-B2-L |
| Additional information for sensor selection | Special design |
| Electrical output | PNP |
| Selection of sensor design | Standard |